

糖の分離（マルトースとラクトース）

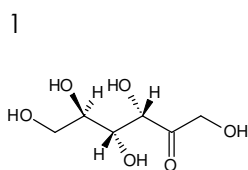
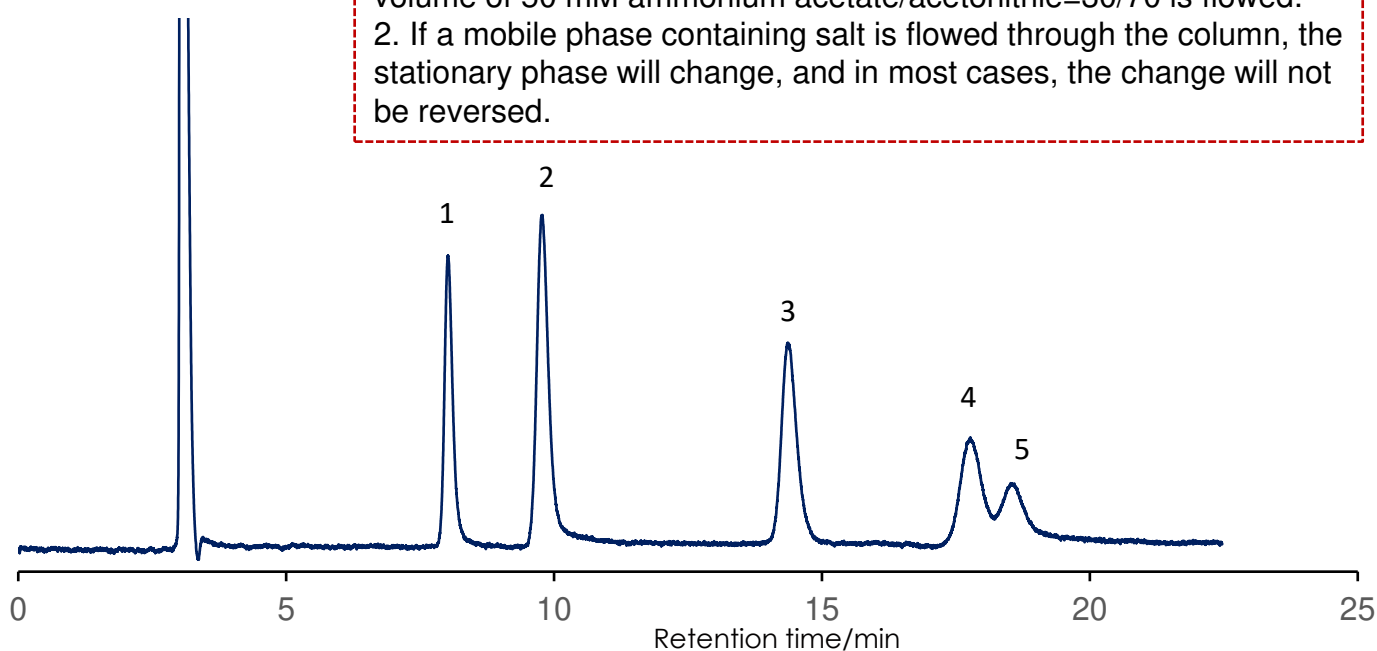
Sugar (maltose and Lactose)

SunArmor NH2 5 μ m, 250 x 4.6 mm i.d.

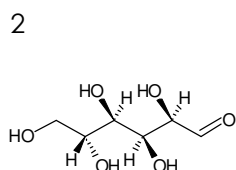
SunArmor NH2

Important Notes

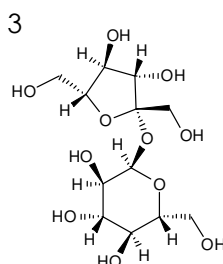
1. Column conditioning must be performed before separating maltose and lactose. this column conditioning is that 20 column volume of 50 mM ammonium acetate/acetonitrile=30/70 is flowed.
2. If a mobile phase containing salt is flowed through the column, the stationary phase will change, and in most cases, the change will not be reversed.



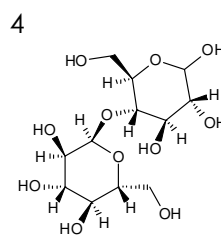
Fructose



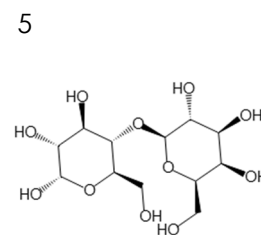
Glucose



Sucrose



Maltose



Lactose

Column: SunArmor NH2 5 μ m, 250 x 4.6 mm

Mobile phase: Water:acetonitrile=25:75

Flow rate: 1.0 mL / min

Temperature: 40 °C

Detection: RI

Sample: 1 = Fructose, 2 = Glucose, 3 = Sucrose, 4 = Maltose, 5 = Lactose