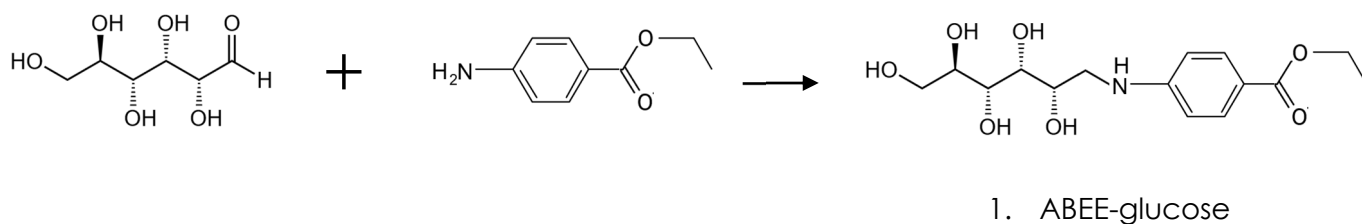
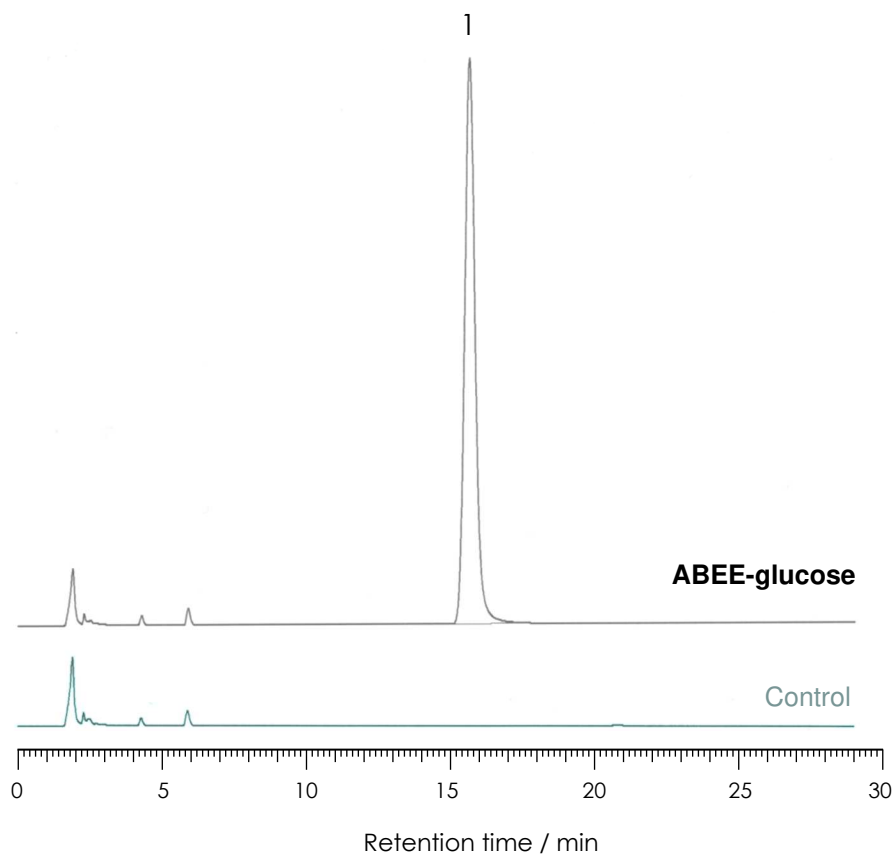


ABEE誘導体化グルコースの分析

SunBridge C18 5 μ m,

ABEE-derivatized D-glucose

150 x 4.6 mm i.d.



Column: SunBridge C18 5 μ m, 150 x 4.6 mm i.d.

Mobile phase: 50 mM Borate buffer pH 9.0 / Acetonitrile= 91 : 9

Temperature: 35 $^{\circ}$ C Flow rate: 1.0 mL/min Injection volume: 10 μ L

Detection: Ex. 305 nm / Em. 360 nm

Sample: 1 = p-Aminobenzoic ethyl ester (ABEE)-derivatized D-glucose

提供: 富山県立大学 工学部生物工学科 植物機能工学講座 加藤 悠一先生