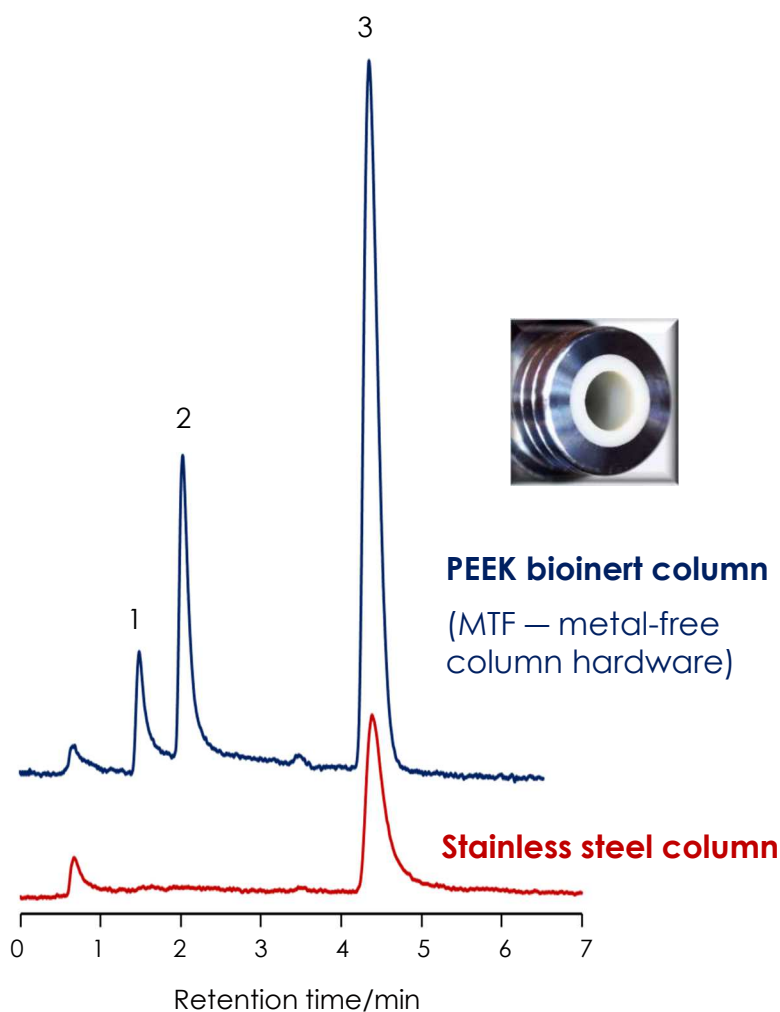


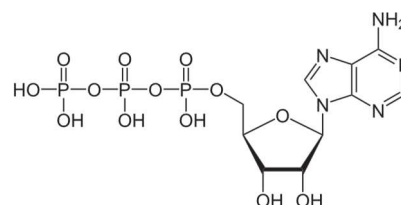
## バイオイナートカラムを用いたヌクレオチドの分離

### Nucleotides on PEEK bioinert column

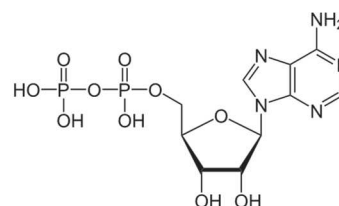
Sunniest RP-AQUA 3  $\mu$ m,  
50 x 2.1 mm i.d., MTF/SS



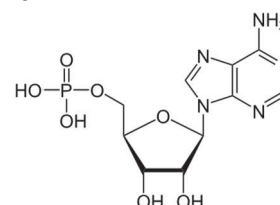
1. 5'-ATP



2. 5'-ADP



3. 5'-AMP



Column: Sunniest RP-AQUA 3  $\mu$ m 50 x 2.1 mm, MTF  
Sunniest RP-AQUA 3  $\mu$ m 50 x 2.1 mm (SS)  
Mobile phase: 10 mM Ammonium formate in water  
Flow rate: 0.2 mL/min, Temperature: 25 °C  
Detection: UV@250 nm  
Injection: 1  $\mu$ L (each 25  $\mu$ g/mL)  
Sample: 1= 5'-ATP 2= 5'-ADP 3= 5'-AMP



# MTF

Dual-tube with PEEK  
and stainless-steel

#### Part number (Ordering information)

To order the MTF version, replace the trailing "1" in the standard part number with "MTF".  
For example, JB2941 becomes JB294MTF (corresponding to SunBridge 3  $\mu$ m 50 x 2.1mm, MTF).  
Available sizes: 2.1 x 50 mm, 2.1 x 100 mm, and 2.1 x 150 mm.