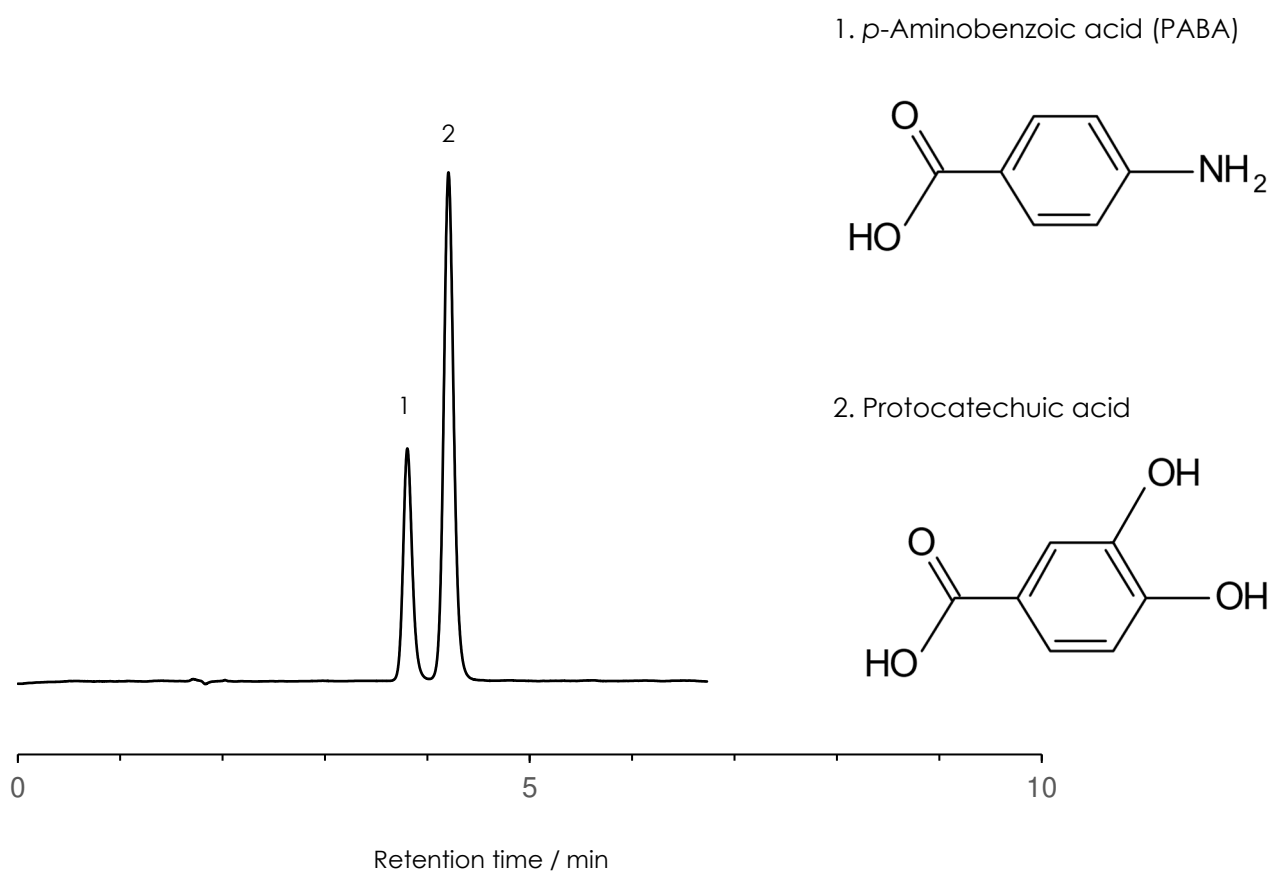


p-アミノ安息香酸・プロトカテク酸の分離

p-Aminobenzoic acid and Protocatechuic acid

SunBridge C18 5 μ m, 150 x 4.6 mm i.d.



Column: SunBridge C18 5 μ m, 150 x 4.6 mm i.d.
Mobile phase: Methanol / 0.1% Formic acid(15:85)
Temperature: 40 $^{\circ}$ C,
Detection: UV@250 nm
Flow rate: 1.0 mL/min
Sample: 1 = *p*-Aminobenzoic acid(PABA) , 2 = Protocatechuic acid
Injection volume: 1 μ L