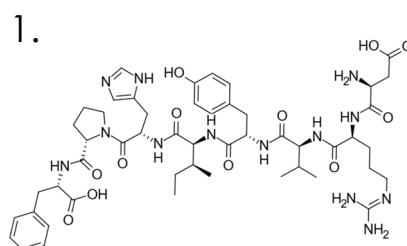
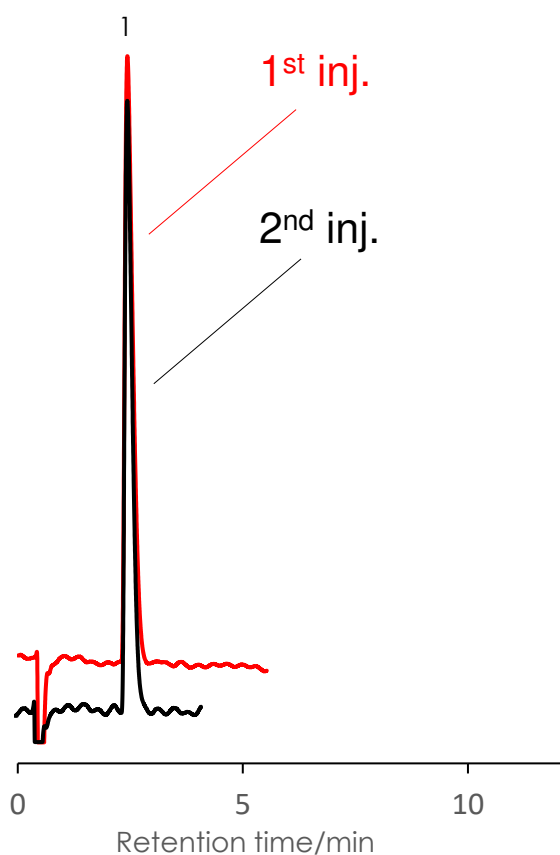


アンジオテンシンII (ペプチド)の分析

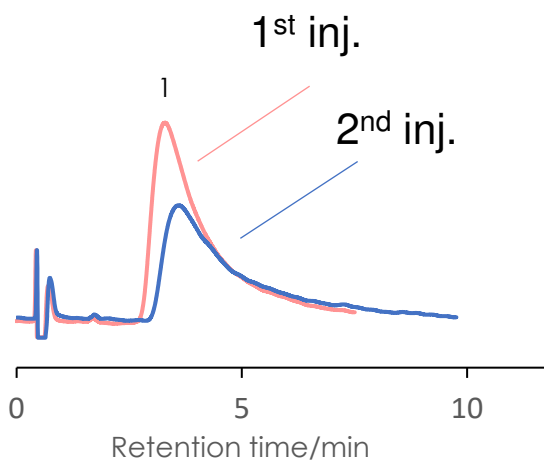
SunShell Peptide C18
2.6 μm, 50 x 2.1 mm i.d.

Angiotensin II (Peptide)

SunShell Peptide C18



Conventional C18



Column: SunShell Peptide C18 , 2.6 μm, Conventional C18

Column dimension: 50 x 2.1 mm

Mobile phase: Acetonitrile/0.1% formic acid in water = 15 / 85,

Flow rate: 0.3 mL/min, Temperature: 40 °C

Detection: UV@210 nm, Sample: Angiotensin II

LC/MS suitable conditions