

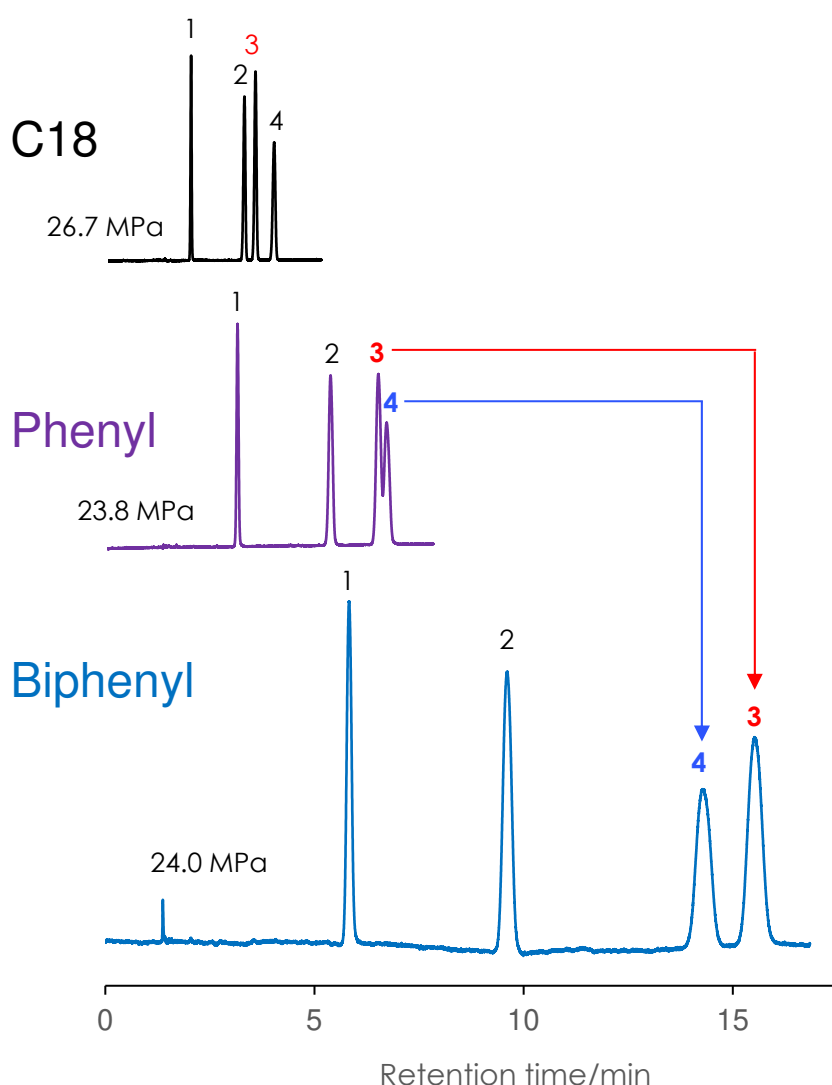
サルファ剤の分離

Sulfonamides

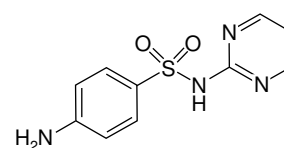
SunShell C18 2.6 μm, 150 x 4.6 mm i.d.

SunShell Phenyl 2.6 μm, 150 x 4.6 mm i.d.

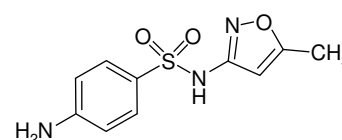
SunShell Biphenyl 2.6 μm, 150 x 4.6 mm i.d.



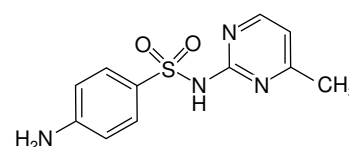
1 Sulfadiazine



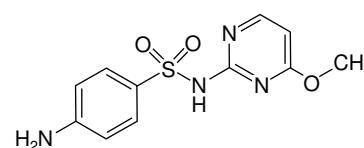
2 Sulfamethoxazole



3 Sulfamerazine



4 Sulfamonomethoxine



Column: SunShell C18, Phenyl, Biphenyl 2.6 μm, 150 x 4.6 mm

Mobile phase: Methanol:50mM Ammonium Acetate = 20:80

Flow rate: 1.0 mL/min

Temperature: 40 °C

Detection: UV@265 nm

Sample: 1 = Sulfadiazine, 2 = Sulfamethoxazole, 3 = Sulfamerazine, 4 = Sulfamonomethoxine