

## 分岐鎖アミノ酸の分離 (2)

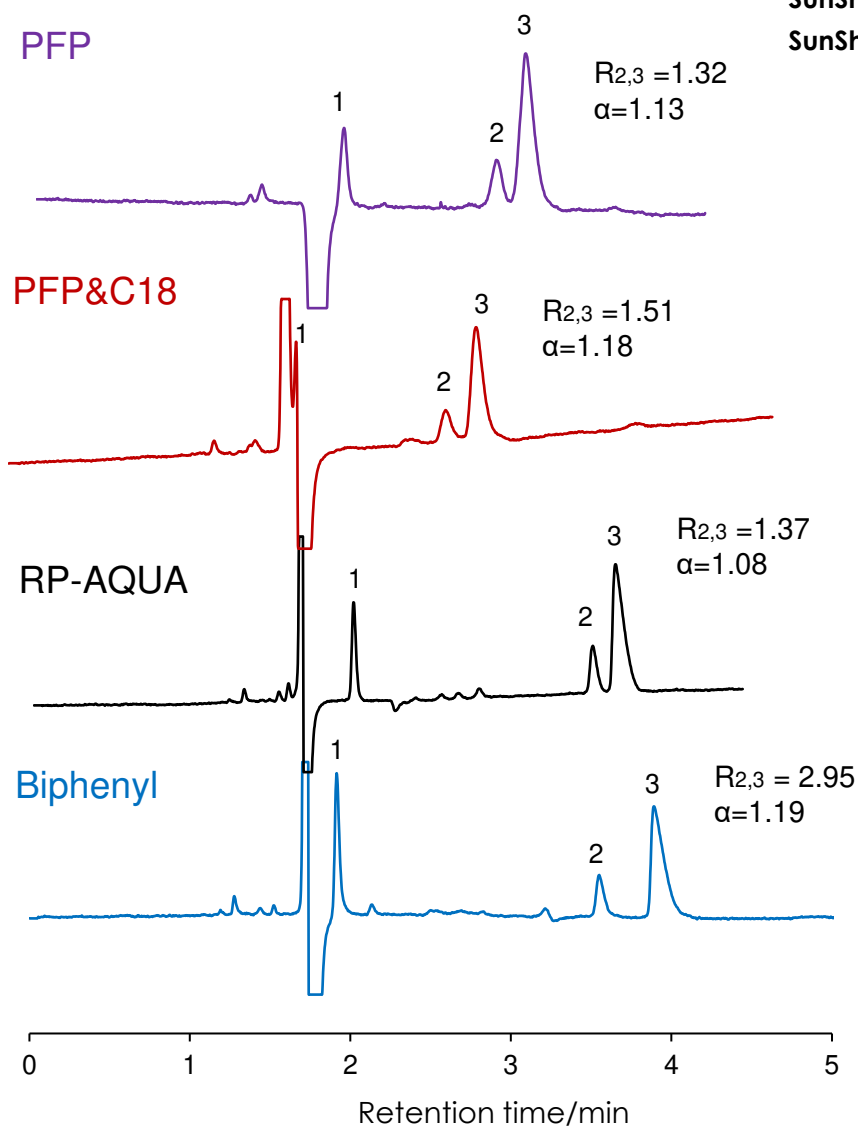
### Branched-chain amino acids (2)

SunShell PFP 2.6  $\mu\text{m}$ , 150 x 4.6 mm i.d.

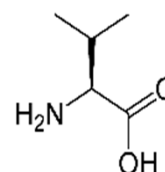
SunShell PFP&C18 2.6  $\mu\text{m}$ , 150 x 4.6 mm i.d.

SunShell RP-AQUA 2.6  $\mu\text{m}$ , 150 x 4.6 mm i.d.

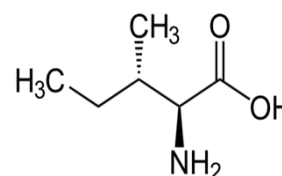
SunShell Biphenyl 2.6  $\mu\text{m}$ , 150 x 4.6 mm i.d.



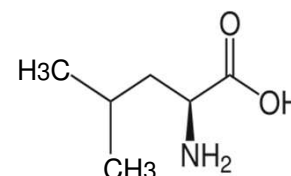
1. L-Valine



2. L-Isoleucine



3. L-Leucine



Column: SunShell PFP, PFP&C18, RP-AQUA, Biphenyl 2.6  $\mu\text{m}$ , 150 x 4.6 mm

Mobile phase: 0.1% formic acid

Flow rate: 1.0 mL/min

Temperature: 40  $^{\circ}\text{C}$

Detection: UV@205 nm

Sample: 1 = L-Valine, 2 = L-Isoleucine, 3 = L-Leucine