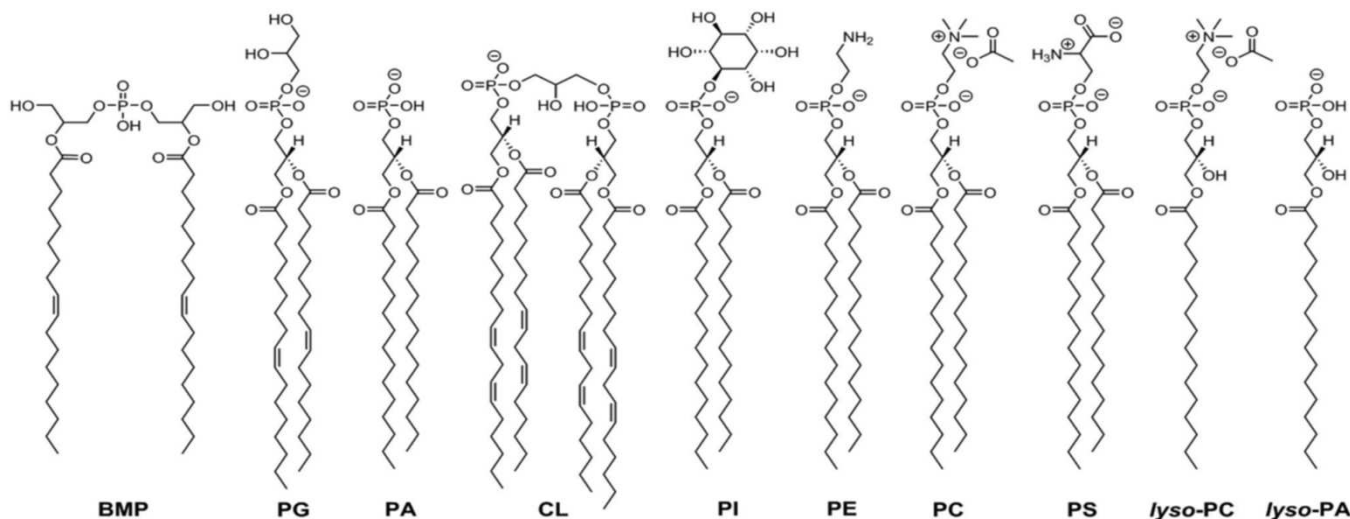
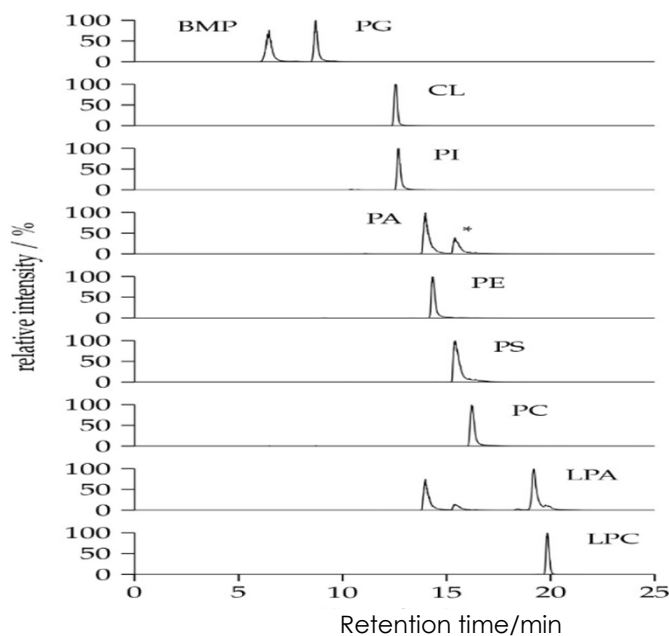


リン脂質の分離 (LC/MS)

iHILIC-Fusion 3.5 μ m, 150 \times 2.1 mm i.d.

Phospholipids (LC/MS)

made by HILICON AB



LC-MS system: Thermo Scientific Ultimate 3000 HPLC system coupled to a Q Exactive™ Plus Hybrid Quadrupole-Orbitrap™ mass spectrometer, which is equipped with a HESI II source and operated in negative ionization mode (ESI-).

Column: iHILIC-Fusion 3.5 μ m 100Å, 100 \times 2.1 mm i.d.

Eluent: A) ammonium acetate solution (35 mM, pH 5.75) and acetonitrile (95:5, v/v);

B) acetonitrile.

Gradient elution: 0–0.5 min, 97% B; 0.5–26.5 min, from 97% to 75% B; 27–33 min, 60% B; 35–45 min 97% B.

Flow rate: 0.3 mL/min

Column temperature: 40 °C

Injection volume: 10 μ L