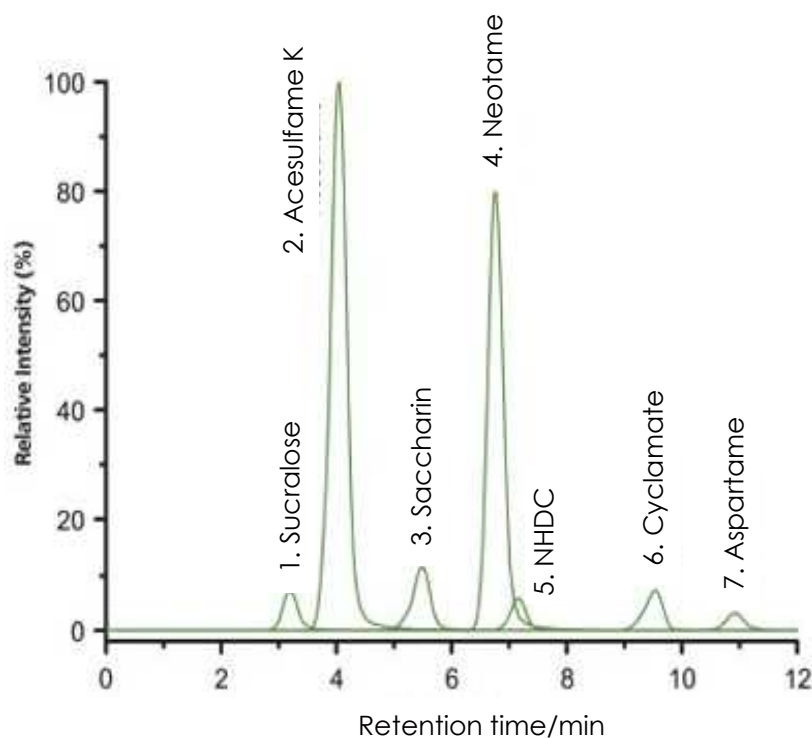


## 合成甘味料の分離 (3)

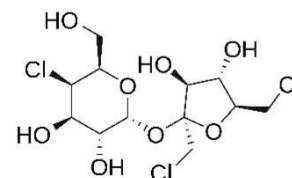
iHILIC-Fusion(+) 3.5  $\mu$ m, 150  $\times$  2.1 mm i.d.

## Artificial sweeteners (3)

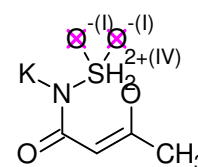
made by HILICON AB



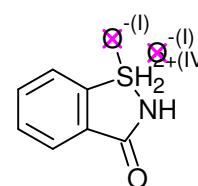
1. Sucralose



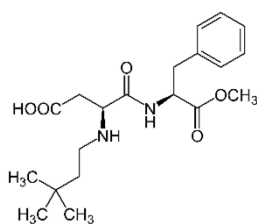
2. Acesulfame K



3. Saccharin

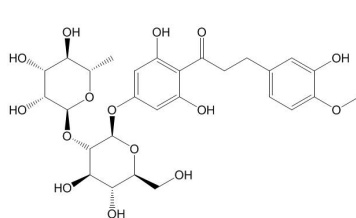


4. Neotame

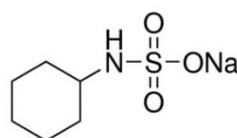


5. NHDC

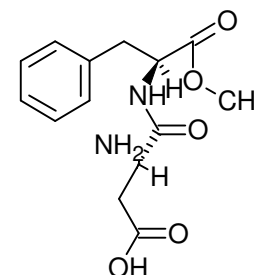
ネオヘスペリジンジヒドロカルボン



6. Cyclamate



7. Aspartame



LC-MS-MS system: Advance UHPLC with a CTC PAL autosampler and Bruker EVOQ™ Elite triple quadrupole system with electrospray ionization; multiple reaction monitoring mode (MRM) in ESI(+) and ESI(-) was used for selective and sensitive detection.

Column: iHILIC-Fusion(+) 3.5  $\mu$ m 100Å, 150  $\times$  2.1 mm i.d.

Gradient elution: A) acetonitrile; B) 10 mM ammonium formate, pH = 3.5; gradient elution from (95/5) A/B to (84/16) A/B in 8.5 min.

Flow rate: 0.3 mL/min

Column temperature: 40 °C

Injection volume: 5  $\mu$ L