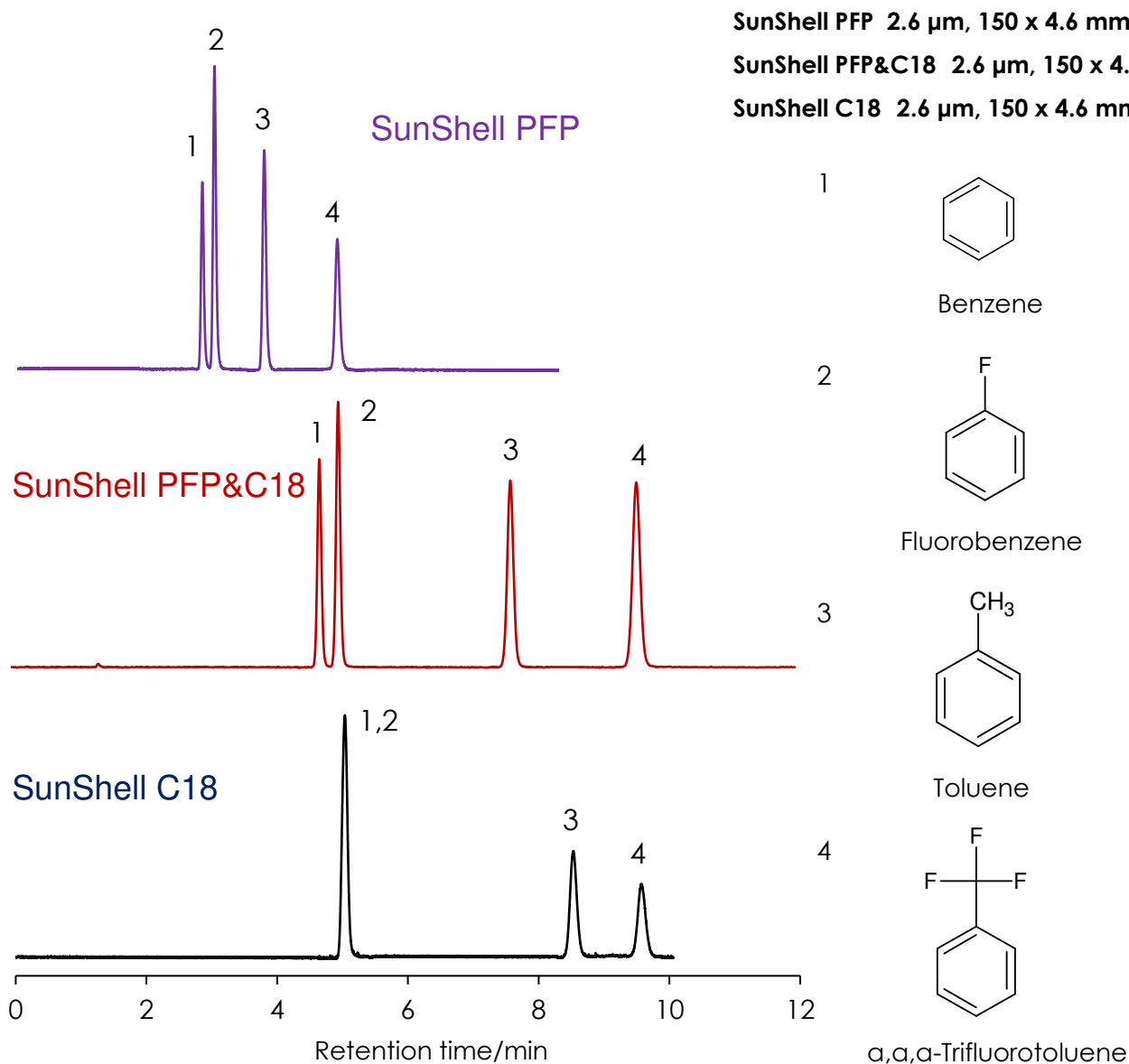


フルオロベンゼンとベンゼンの分離 (2)

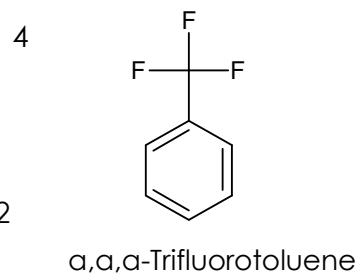
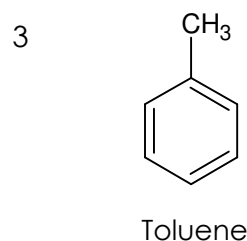
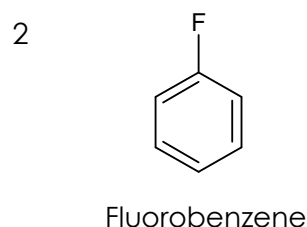
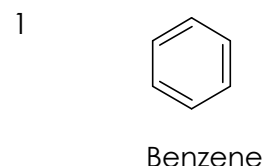
Fluorobenzene and benzene (2)



SunShell PFP 2.6 μm, 150 x 4.6 mm i.d.

SunShell PFP&C18 2.6 μm, 150 x 4.6 mm i.d.

SunShell C18 2.6 μm, 150 x 4.6 mm i.d.



Column: SunShell PFP 2.6 μm, 150 x 4.6 mm i.d.

SunShell PFP&C18 2.6 μm, 150 x 4.6 mm i.d.

SunShell C18 2.6 μm, 150 x 4.6 mm i.d.

Mobile phase: Methanol:water=60:40

Flow rate: 1.0 mL / min

Temperature: 40 °C

Detection: UV@250 nm

Sample: 1 = Benzene, 2 = Fluorobenzene, 3 = Toluene, 4 = a,a,a-Trifluorotoluene

*Biphenyl phase can't make Benzene and fluorobenzene separate.