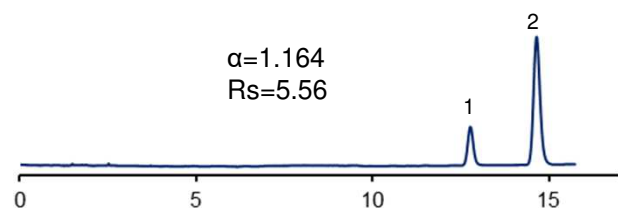


### cis, trans-スチルベンの分離(2)

### Stilbene (2)

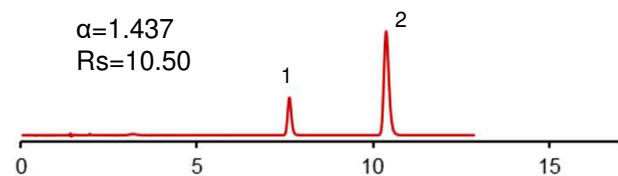
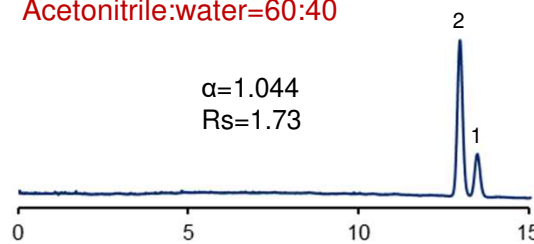
SunShell C18 2.6  $\mu$ m, 150 x 4.6 mm i.d.  
 SunShell C30 2.6  $\mu$ m, 150 x 2.1 mm i.d.  
 SunShell Phenyl 2.6  $\mu$ m, 150 x 4.6 mm i.d.  
 SunShell Biphenyl 2.6  $\mu$ m, 150 x 4.6 mm i.d.  
 SunShell PFP&C18 2.6  $\mu$ m, 150 x 4.6 mm i.d.  
 SunShell PFP 2.6  $\mu$ m, 150 x 4.6 mm i.d.

Methanol:water=75:25

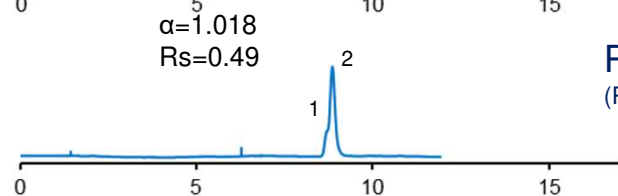
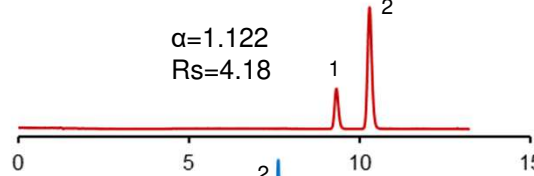


C18

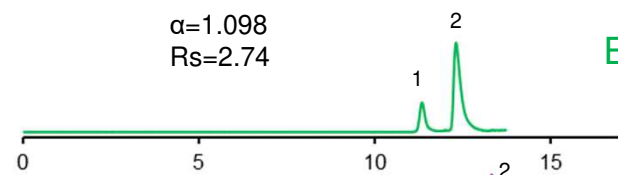
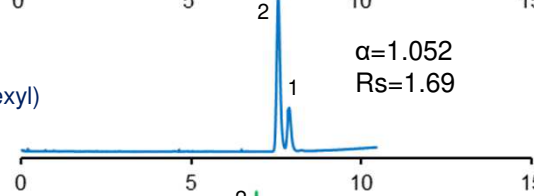
Acetonitrile:water=60:40



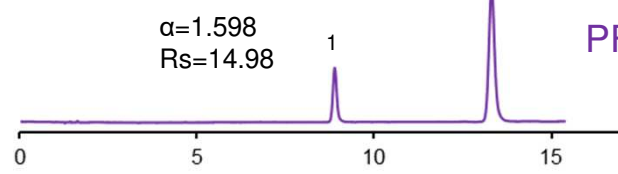
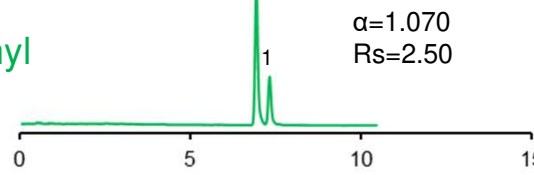
C30



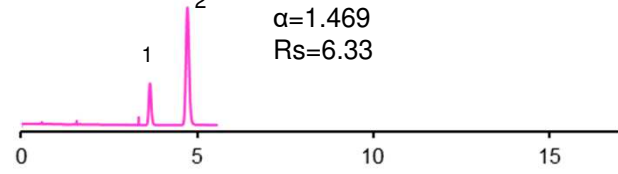
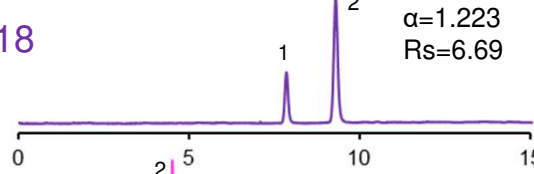
Phenyl  
(Phenyl-hexyl)



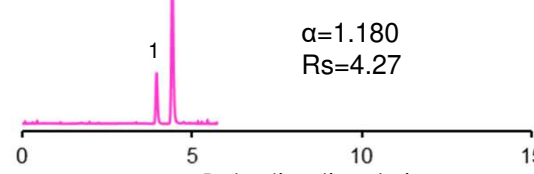
Biphenyl



PFP&C18



PFP



Column: SunShell C18 2.6  $\mu$ m 150 x 4.6 mm  
 SunShell C30 2.6  $\mu$ m 150 x 2.1 mm  
 SunShell Phenyl 2.6  $\mu$ m 150 x 4.6 mm  
 SunShell Biphenyl 2.6  $\mu$ m 150 x 4.6 mm  
 SunShell PFP&C18 2.6  $\mu$ m 150 x 4.6 mm  
 SunShell PFP 2.6  $\mu$ m 150 x 4.6 mm

Mobile phase: Methanol:water=75:25  
 Acetonitrile:water=60:40

Flow rate: 1.0 mL/min and 0.2 mL/min for only C30

Temperature: 40 °C

Detection: UV@230 nm

Sample: 1 = cis-Stilbene, 2 = trans-Stilbene

