

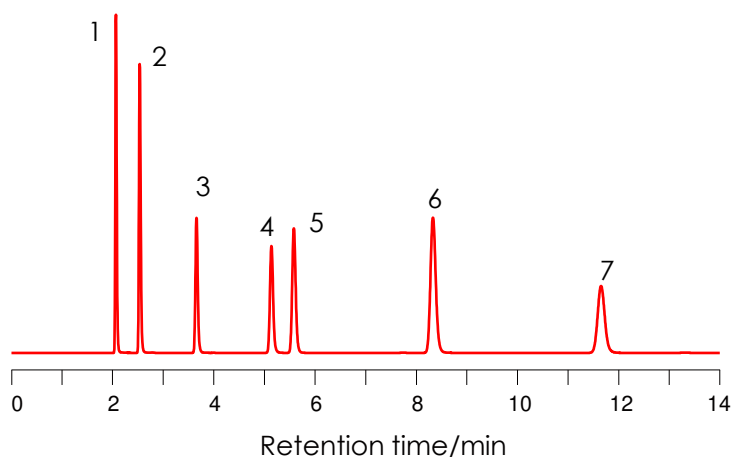
核酸塩基の分離 (4)

Nucleic acid bases (4)

SunShell RP-AQUA 2.6 μ m, 150 x 4.6 mm i.d.

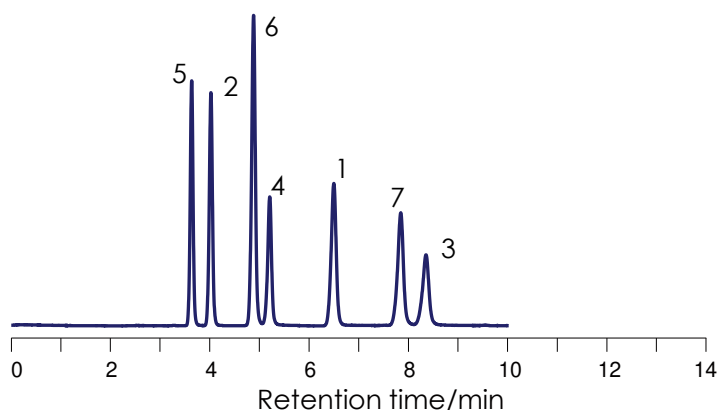
SunShell HILIC-Amide 2.6 μ m, 150 x 4.6 mm i.d.

Column: SunShell RP-AQUA, 2.6 μ m 150 x 4.6 mm

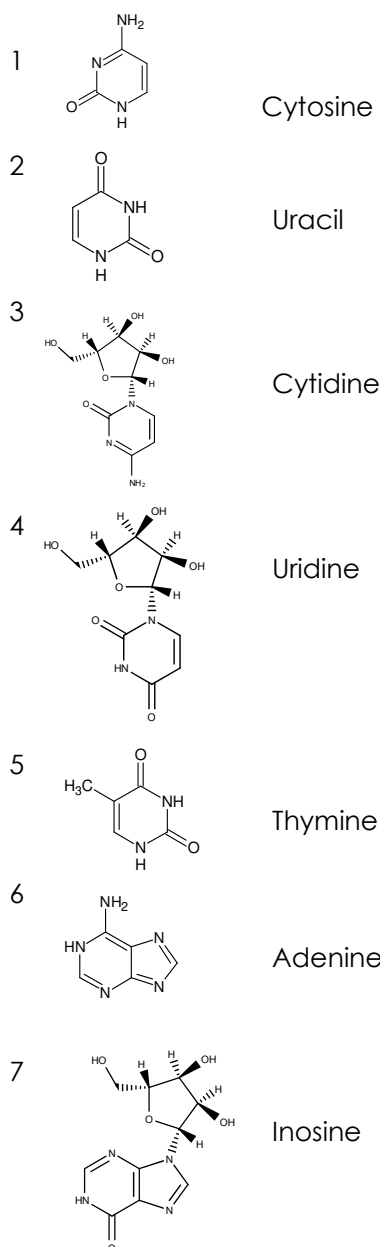


Mobile phase:
20 mM ammonium acetate pH6.8
 Flow rate: 1.0 mL / min
 Temperature: 40 °C
 Pressure: 23.8 MPa
 Detection: UV@250 nm

Column: SunShell HILIC-Amide, 2.6 μ m, 150 x 4.6 mm



Mobile phase:
Acetonitrile:20 mM ammonium acetate pH6.8 = 80:20
 Flow rate: 0.5mL / min
 Temperature: 40 °C
 Pressure: 6.1 MPa
 Detection: UV@250 nm



Instrument	
Hitachi Chromaster®	
Detector:	5410
Oven:	5310
AutoSampler:	5260
Pump:	5160

