

馬尿酸類の分離 (1)

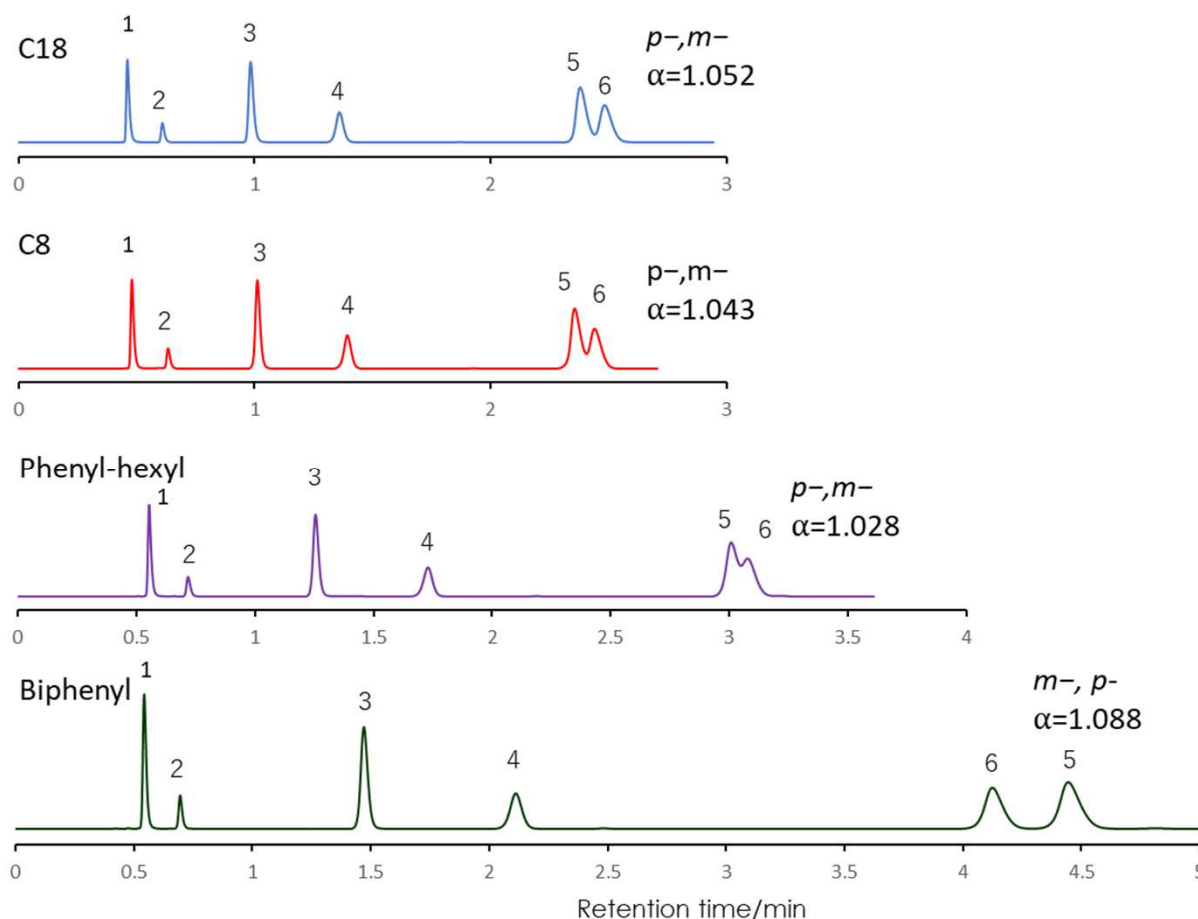
SunShell C18 2.6 μm, 100 x 2.1 mm i.d.

SunShell C8 2.6 μm, 100 x 2.1 mm i.d.

SunShell Phenyl 2.6 μm, 100 x 2.1 mm i.d.

SunShell Biphenyl 2.6 μm, 100 x 2.1 mm i.d.

Hippuric acid (1)



Column: SunShell C18 2.6 μm 100 x 2.1 mm i.d.

SunShell C8 2.6 μm 100 x 2.1 mm i.d.

SunShell Phenyl 2.6 μm 100 x 2.1 mm i.d.

SunShell Biphenyl 2.6 μm 100 x 2.1 mm i.d.

Mobile phase: 2-Propanol/20 mM Ammonium acetate pH6.8 = 3/97

Flow rate: 0.4 mL/min

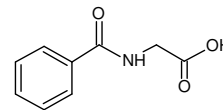
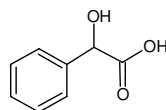
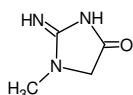
Temperature: 40 °C

Detection: UV@230 nm

Sample: 1=Creatinine,

2=Mandelic acid,

3=Hippuric acid



4=o-Methylhippuric acid,

5=p-Methylhippuric acid,

6=m-Methylhippuric acid

