

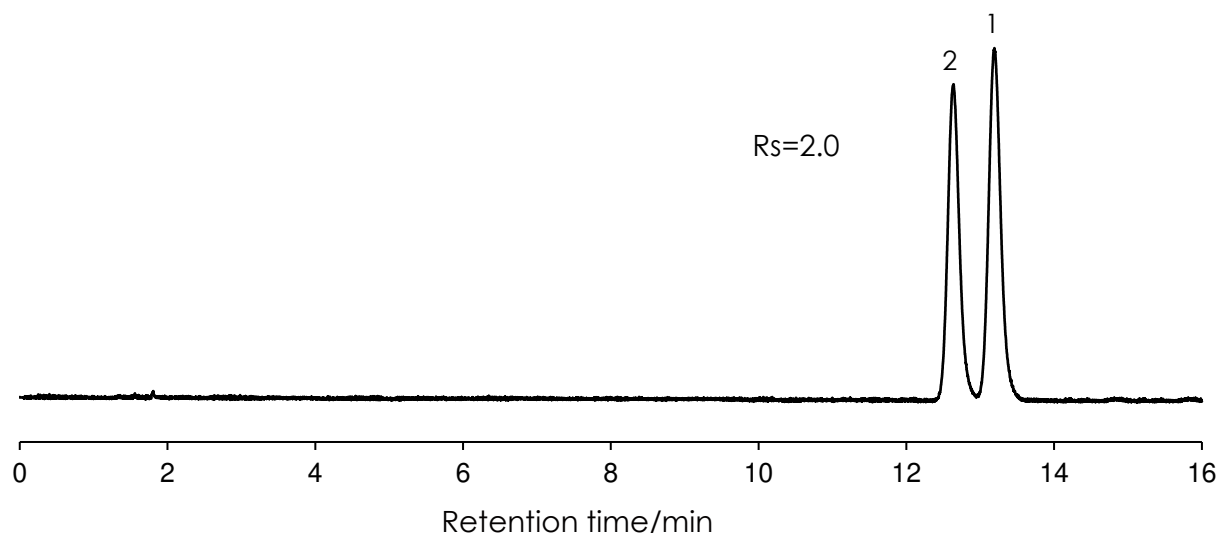
cis,trans -スチルベンの分離 (1)

Stilbene (1)

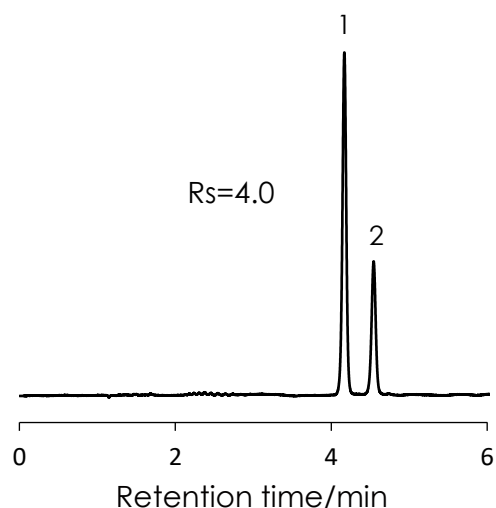
SunShell PFP 2.6 μ m, 150 x 4.6 mm i.d.

SunShell C18 2.6 μ m, 150 x 4.6 mm i.d.

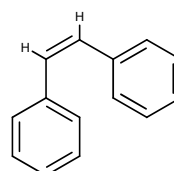
SunShell C18 2.6 μ m, 150 x 4.6 mm i.d.



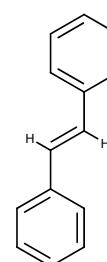
SunShell PFP 2.6 μ m, 150 x 4.6 mm i.d.



1. cis-Stilbene



2. trans-Stilbene



Column: SunShell PFP 2.6 μ m, 150 x 4.6 mm

SunShell C18 2.6 μ m, 150 x 4.6 mm

Mobile phase: Acetonitrile:Water = 60:40

Flow rate: 1.0 mL/min

Temperature: 25 $^{\circ}$ C

Detection: UV@230nm

Sample: 1= cis-Stilbene, 2 = trans-Stilbene

Instrument	
Hitachi Chromaster®	
Detector:	5410
Oven:	5310
AutoSampler:	5260
Pump:	5160

