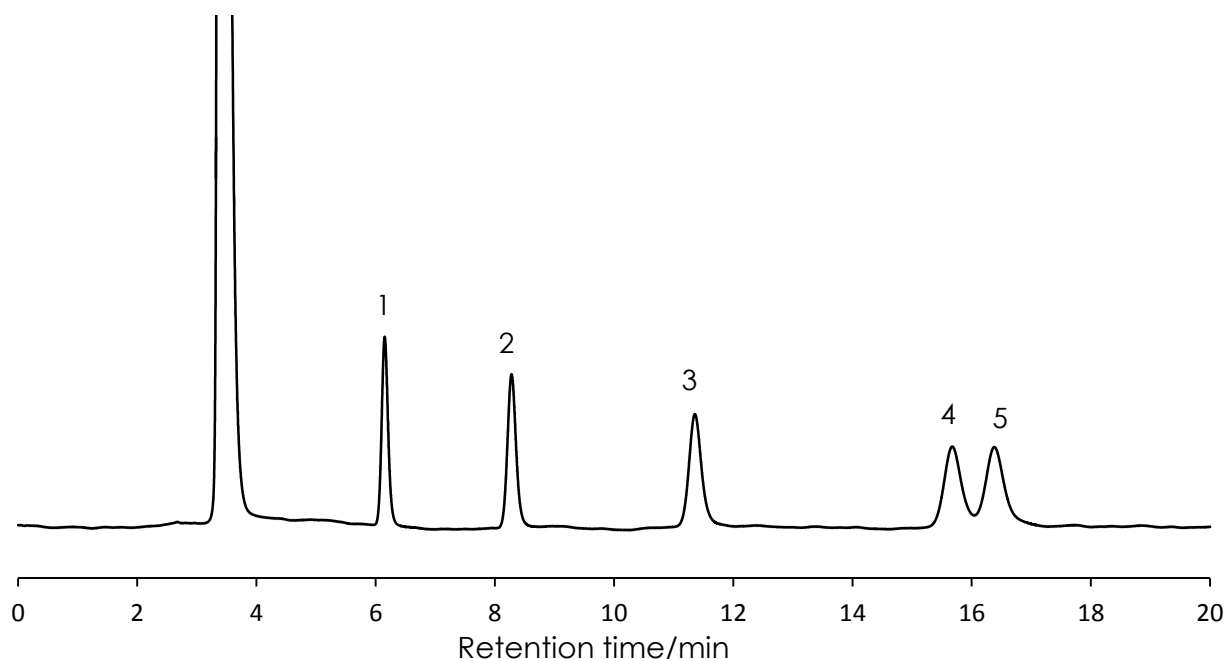


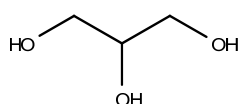
糖アルコールの分離

Sugar alcohol

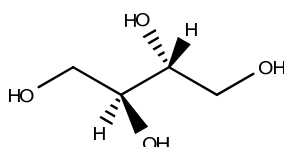
SunArmor NH2 5 μ m, 250 x 4.6 mm i.d.



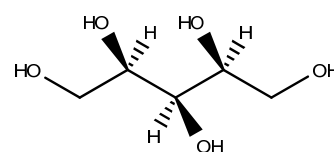
1. Glycerine



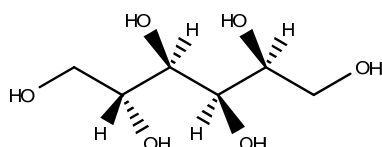
2. Erythritol



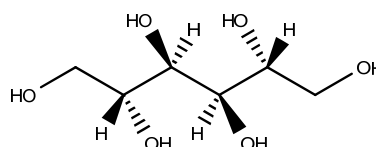
3. Xylitol



4. Sorbitol



5. Mannitol



Column: SunArmor NH2 5 μ m, 250 x 4.6 mm

Mobile phase: Acetonitrile:Water = 80:20

Flow rate: 1.0 mL/min

Temperature: 40 °C

Detection: RI

Sample: 1= Glycerine, 2= Erythritol, 3= Xylitol, 4= Sorbitol, 5= Mannitol