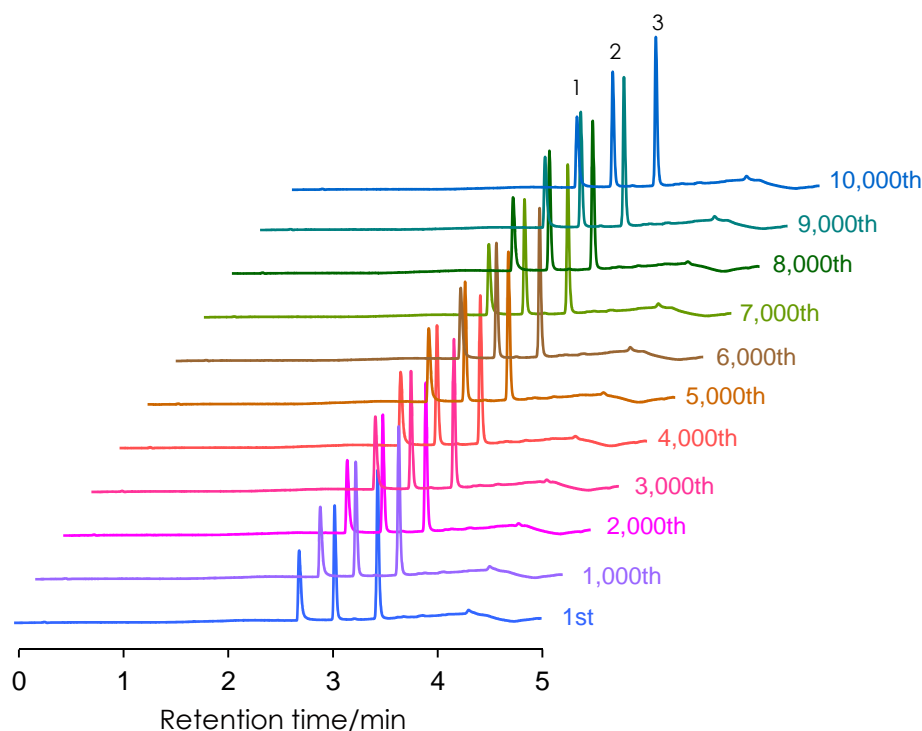


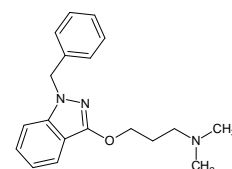
## 酸性条件(pH2)下の連続分析

SunShell C18 2.6  $\mu$ m, 50 x 2.1 mm i.d.

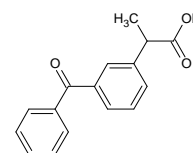
## Continuous analysis under acidic pH condition



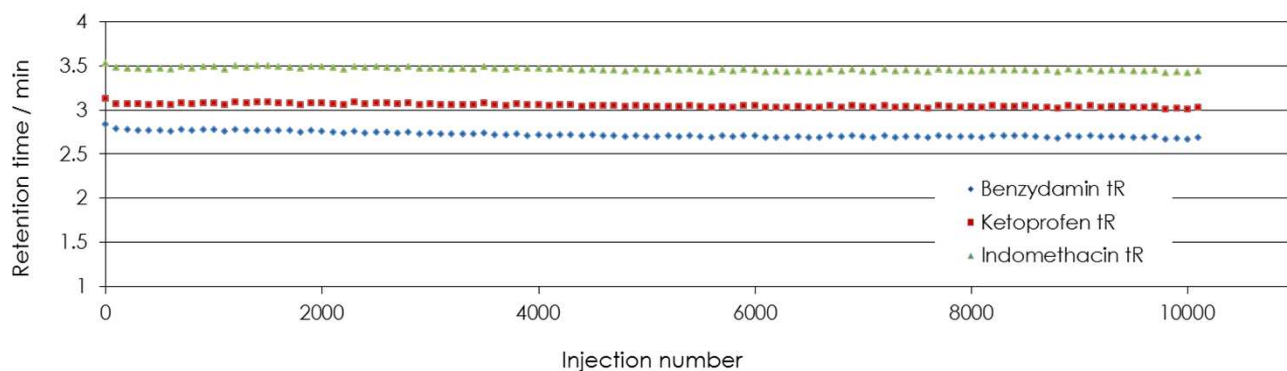
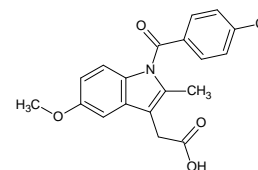
1. Benzydamine



2. Ketoprofen



3. Indomethacin



Column: SunShell C18 2.6  $\mu$ m, 50 x 2.1 mm  
Mobile phase: A) 0.1% trifluoroacetic acid pH 2.0  
B) Acetonitrile

Gradient program:

Time (min)	0	3	3.1	5
% B	10	90	10	10

Flow rate: 0.5 mL/min  
Temperature: 40 °C  
Back pressure: 11 MPa to 17 MPa  
Detection: UV@270nm  
Injection volume: 0.5  $\mu$ L  
Sample: 1=Benzydamine (0.5 mg/mL), 2=Ketoprofen (0.04 mg/mL),  
3= Indomethacin (0.05 mg/mL)

Instrument  
Hitachi Chromaster®  
Detector: 5410  
Oven: 5310  
AutoSampler: 5260  
Pump: 5160

