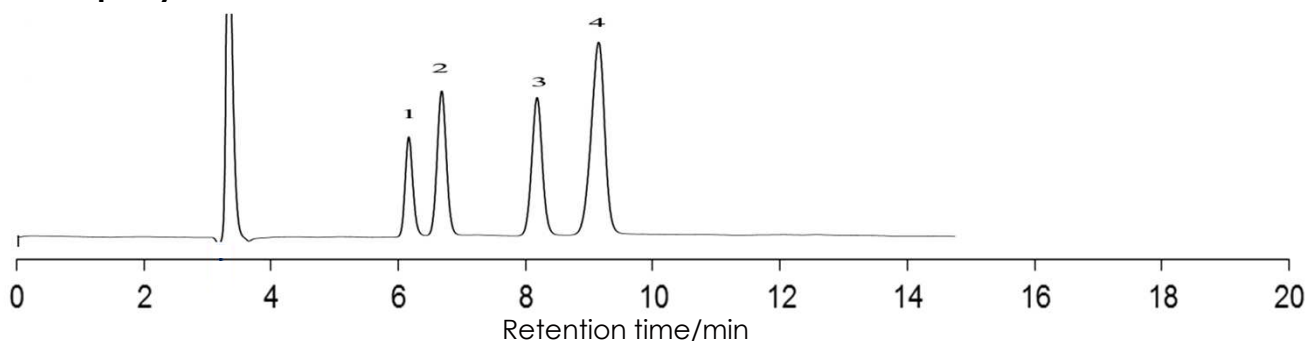


## 糖の分離

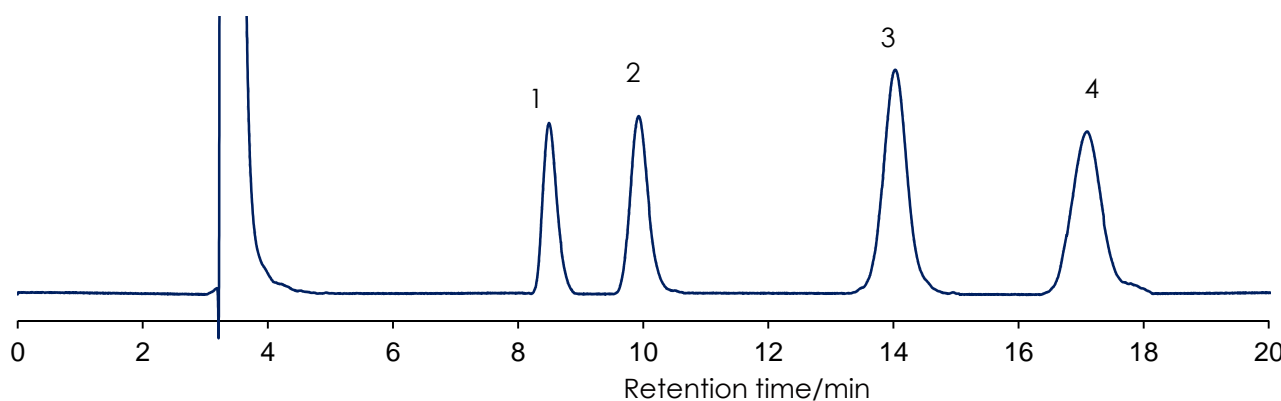
## Sugar

Sunniest NH2 5  $\mu$ m, 250 x 4.6 mm i.d.

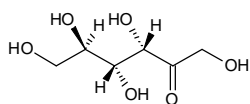
Company A NH2



Sunniest NH2

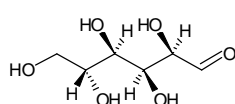


1



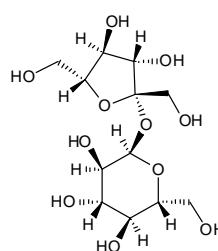
Fructose

2



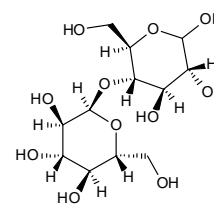
Glucose

3



Sucrose

4



Maltose

Column: Company A NH2 5  $\mu$ m, 250 x 4.6 mm

Sunniest NH2 5  $\mu$ m, 250 x 4.6 mm

Mobile phase: Acetonitrile:water=75:25

Flow rate: 1.0 mL / min

Temperature: 40  $^{\circ}$ C

Detection: RI

Sample: 1 = Fructose, 2 = Glucose, 3 = Sucrose, 4 = Maltose