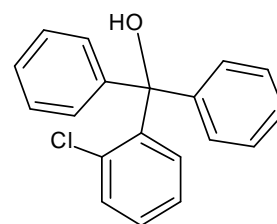
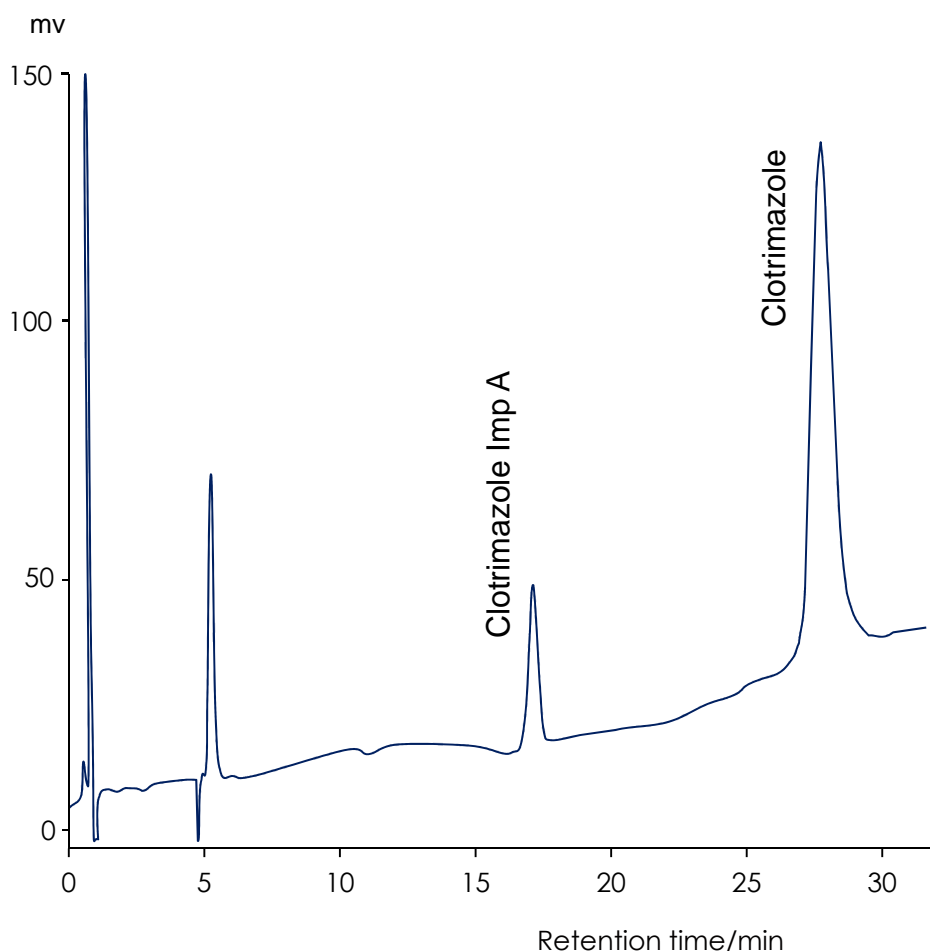


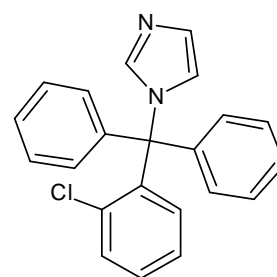
## クロトリマゾール

### Clotrimazole

Sunrise C18-SAC 5  $\mu$ m, 150 x 4.6 mm i.d.



Clotrimazole Imp A



Clotrimazole

System Suitability Requirement: 1. Tailing Factor NMT 1.5  
2. RSD NMT 2%

Column: Sunrise C18-SAC 5 $\mu$ m, 150 x 4.6 mm

Mobile phase : Acetonitrile and Buffer (1:1)

Buffer: 0.3 g/L of anhydrous monobasic sodium phosphate and 0.35 g/L of anhydrous dibasic sodium phosphate in water. The resulting solution has a pH of 6.i-7.0.

Flow rate : 2.0. mL/min

Detection : UV@ 206 nm

Column Temperature : Ambient

Injection Volume : 8  $\mu$ L