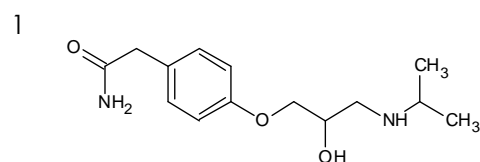
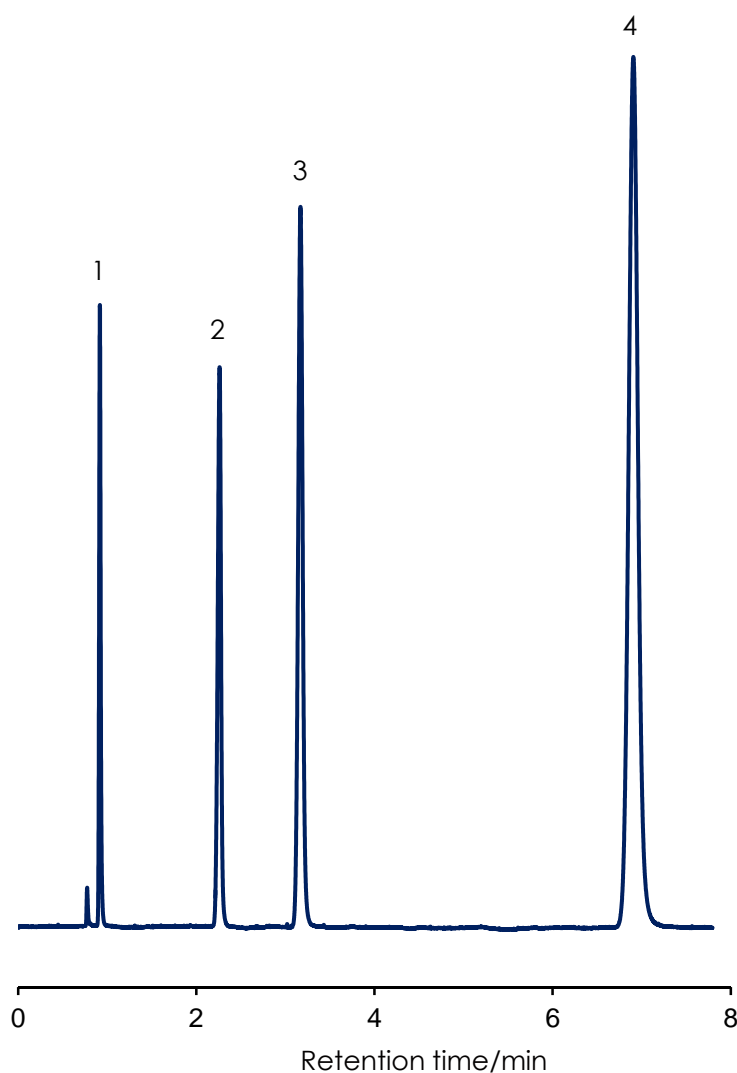


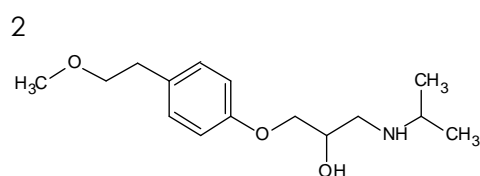
β遮断薬の分離

β blocker

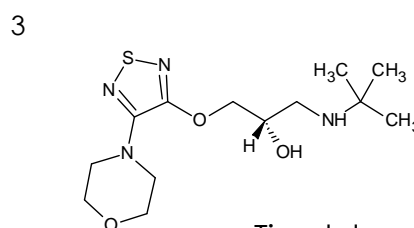
SunShell C18 2.6 μm, 100 x 4.6 mm i.d.



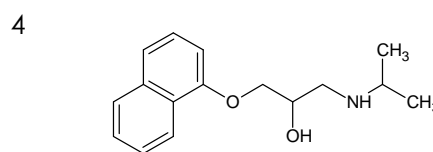
Atenolol



Metoprolol



Timolol



Propranolol

Column: SunShell C18 2.6 μm, 100 x 4.6 mm

Mobile phase: Metanol:25 mM phosphate buffer pH7 = 50:50

Flow rate: 1.0 mL / min

Temperature: 40 °C

Detection: UV@280 nm

Sample: 1 = Atenolol, 2 = Metoprolol, 3 = Timolol, 4 = Propranolol