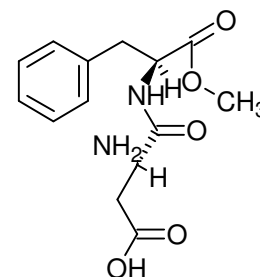
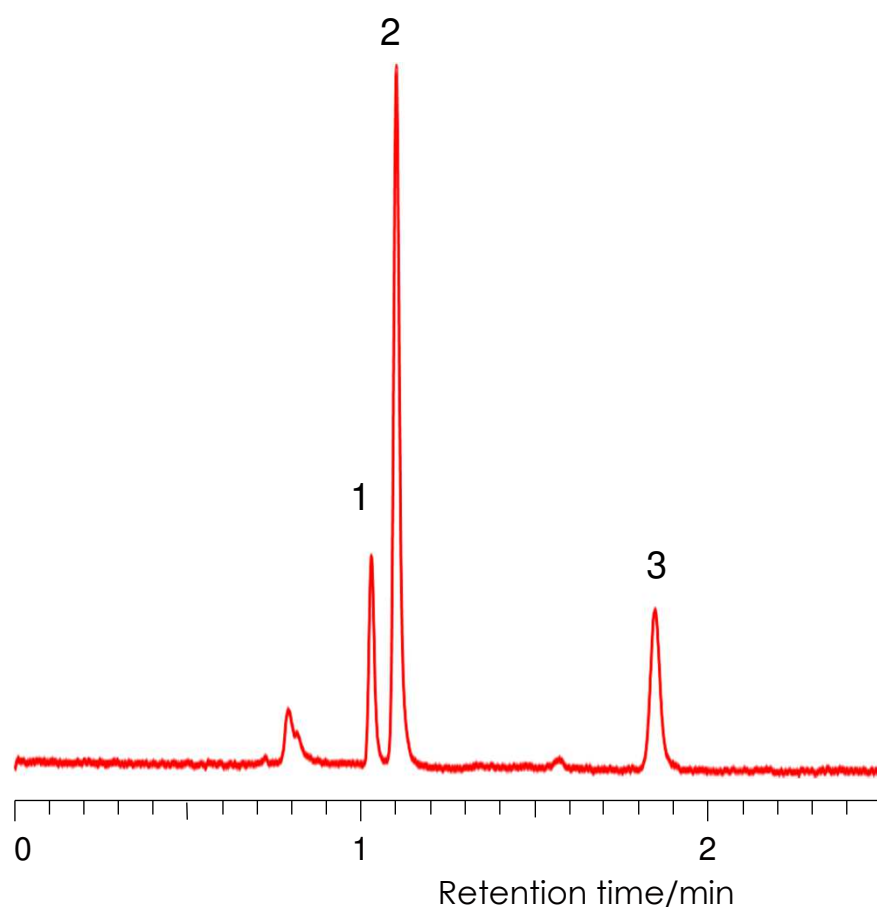
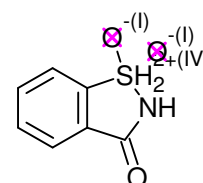


合成甘味料の分離 (1)

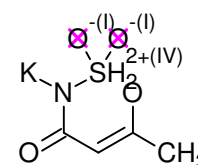
Artificial sweeteners (1) SunShell HILIC-Amide 2.6 μ m, 100 x 4.6 mm i.d.



1. Aspartame



2. Saccharin



3. Acesulfame K

Column:

SunShell HILIC-Amide 2.6 μ m, 100 x 4.6 mm

Mobile phase: 25 mM phosphate buffer (pH2.5):acetonitrile=2:8

Flow rate: 1.0 mL/min

Temperature: Ambient

Detection: UV@215 nm

Sample: 1 = Aspartame, 2 = Saccharin, 3 = Acesulfame K