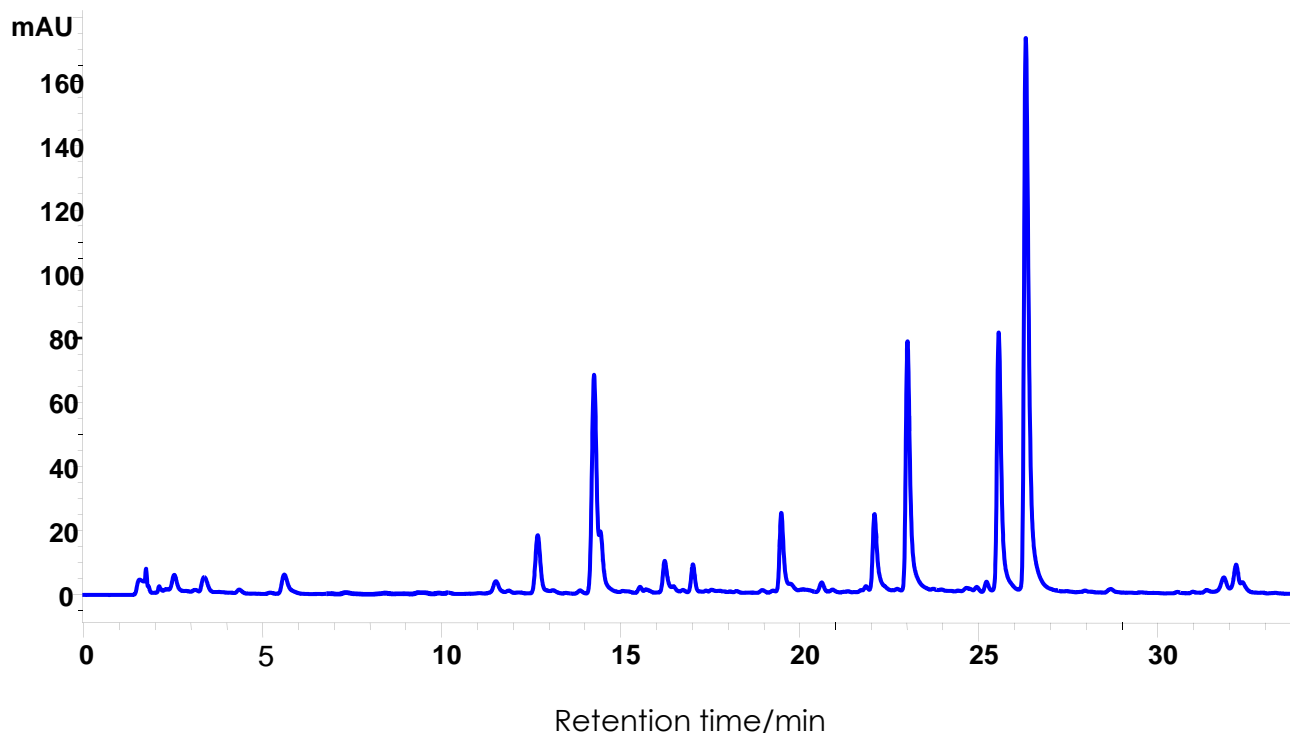


## ブラックコホシュ(サプリメント)の分離

### Black Cohosh

SunShell C18 2.6  $\mu$ m, 150 x 2.1 mm i.d.

DAD1 A, Sig=330, 4 Ref=360,100



Column: SunShell C18 2.6  $\mu$ m, 150 x 2.1 mm

Mobile phase:

A) H<sub>2</sub>O with 0.1% formic acid.

B) CH<sub>3</sub>CN with 0.1% formic acid.

Gradient program:

Time 0 min. 30 min. 32 min.

% B 10% 30% 100%

Flow rate: 0.2 mL/min.

Temperature: 40 °C

Detection: UV@330 nm

Samples: Black Cohosh (Natural products)

**USDA** Courtesy of Dr. Pei Chen  
United State Department of Agriculture