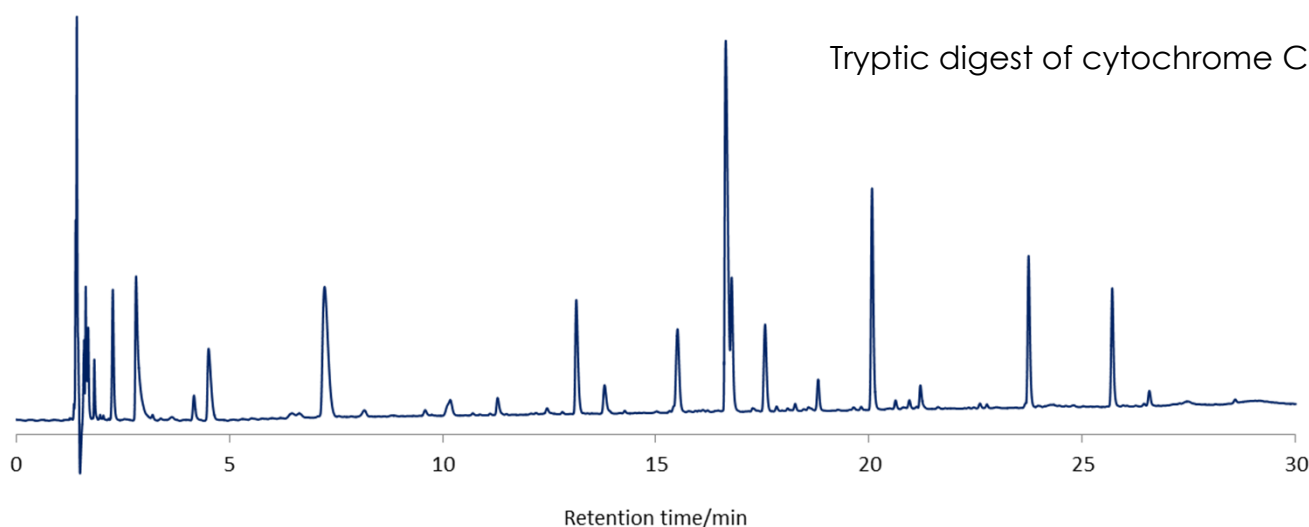
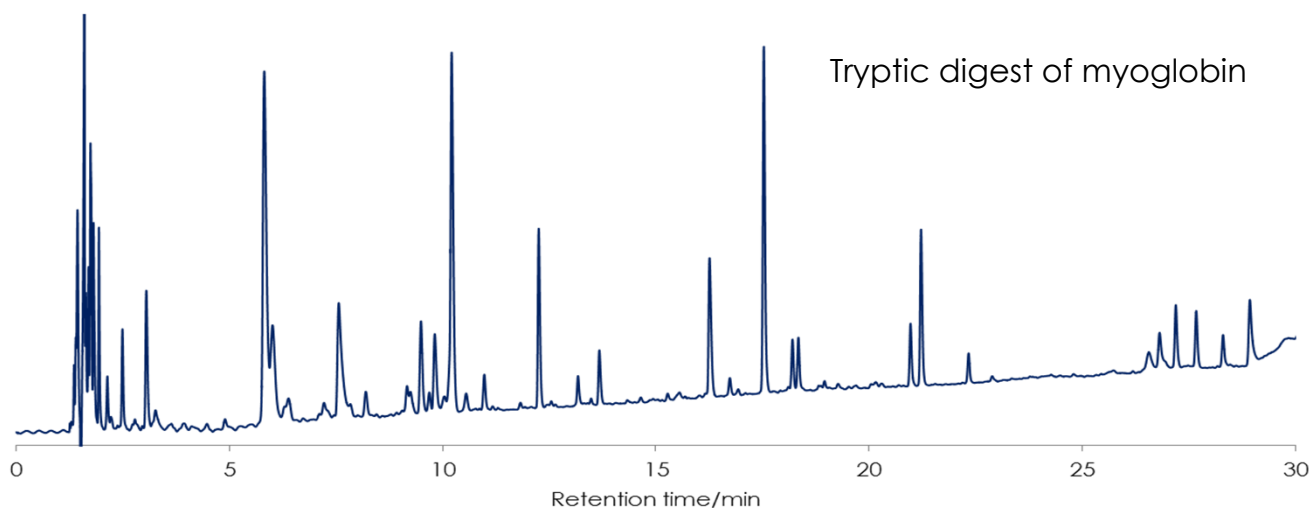


ペプチドの分離 (1)

Peptides (1)

SunShell C18-WP 2.6 μm , 150 x 4.6 mm i.d.



Column: SunShell C18 -WP 2.6 μm , 150 x 4.6 mm

Mobile phase:

A) 0.1% TFA in H₂O/CH₃CN=(90:10)

B) 0.1% TFA in CH₃CN

Gradient program

Time	0 min	5 min	40 min
%B	5%	5%	50%

Flow rate: 1.0 mL/min,

Temperature: 25 °C

Detection: UV@215 nm

Sample: Tryptic digest of myoglobin and tryptic digest of cytochrome C