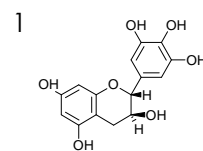
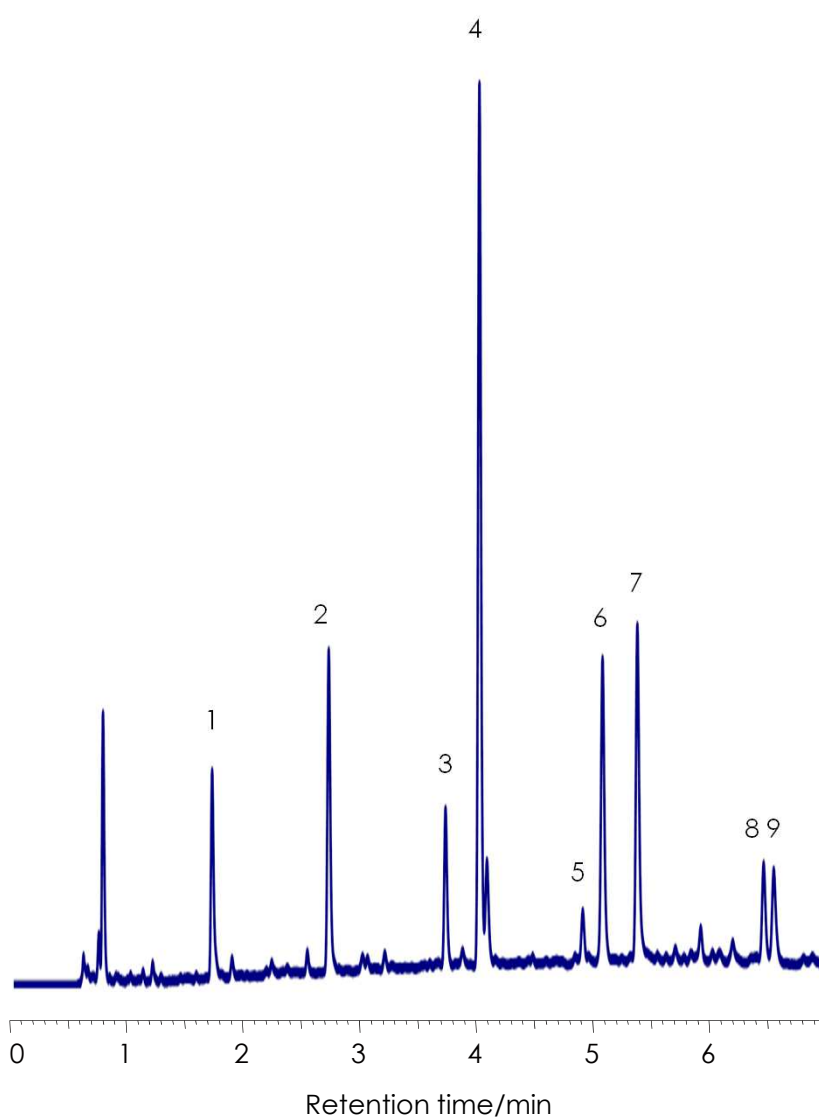


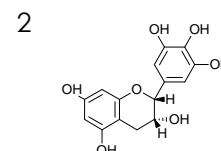
## ウーロン茶の分離

### Oolong tea

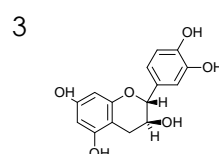
SunShell C18 2.6  $\mu\text{m}$ , 75 x 4.6 mm i.d.



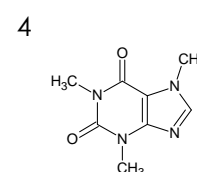
Gallocatechin



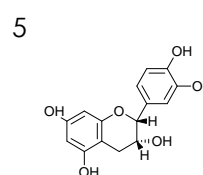
Epigallocatechin



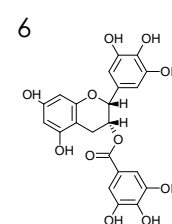
Catechin



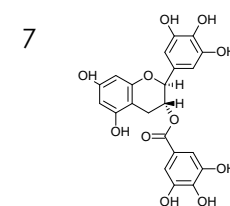
Caffeine



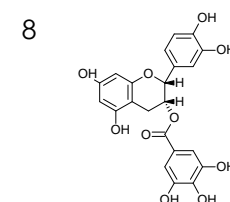
Epicatechin



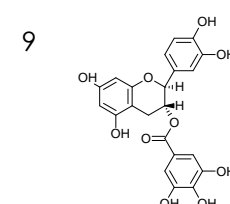
Epigallocatechin gallate I



Gallocatechin gallate



Epicatechin gallate



Catechin gallate

Column: SunShell C18 2.6  $\mu\text{m}$ , 75 x 4.6 mm

Mobile phase:

A) 0.1% Phosphoric acid

B)  $\text{CH}_3\text{CN}$

Gradient program

Time	0 min	7.5 min	10 min
%B	2%	25%	25%

Flow rate: 1.0 mL/min,

Temperature: 25  $^{\circ}\text{C}$

Detection: UV@250 nm

Sample: Oolong tea