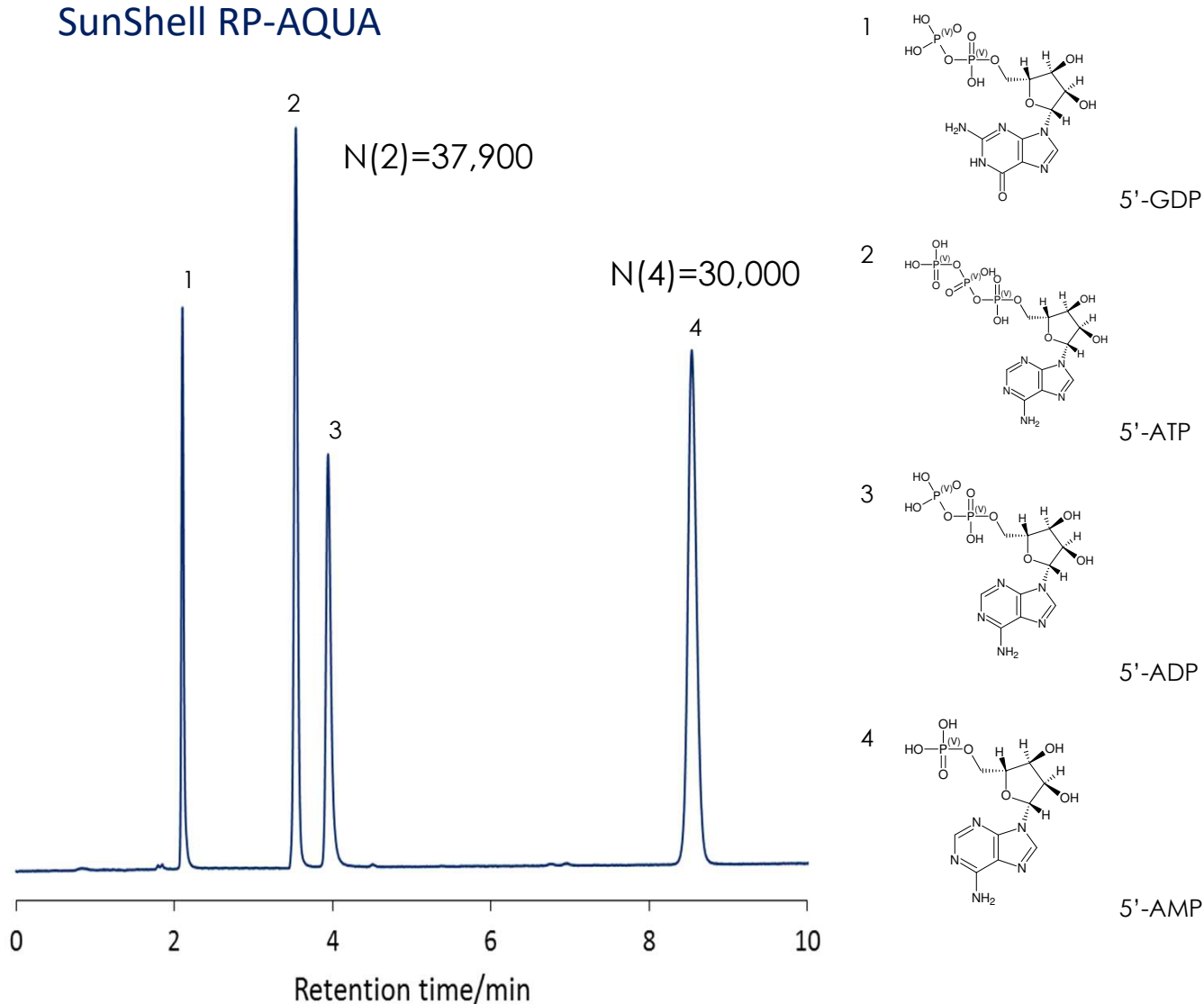


## ヌクレオチドの分離 (2)

### Nucleotides (2)

SunShell RP-AQUA 2.6  $\mu$ m, 150 x 4.6 mm i.d.

#### SunShell RP-AQUA



Column: SunShell RP-AQUA 2.6  $\mu$ m, 150 x 4.6 mm i.d.

Mobile phase: 20mM Phosphate buffer pH6.0

Flow rate: 1.0 mL/min

Temperature: 25  $^{\circ}$ C

Detection: UV@250nm

Sample: 1 = 5'-GDP, 2 = 5'-ATP, 3 = 5'-ADP, 4 = 5'-AMP

UHPLC: X-LC (Jasco)