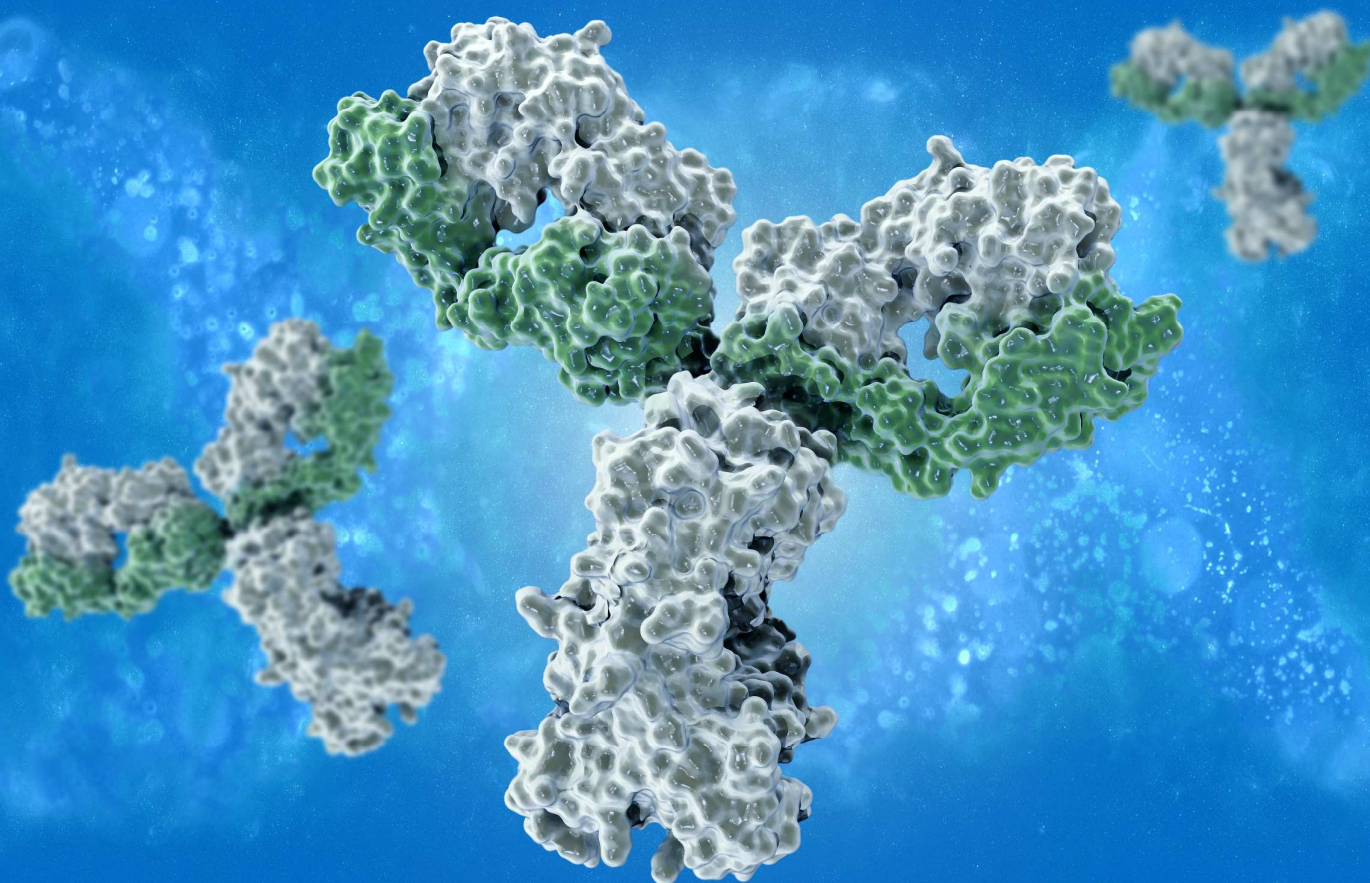


SunShell C4-100



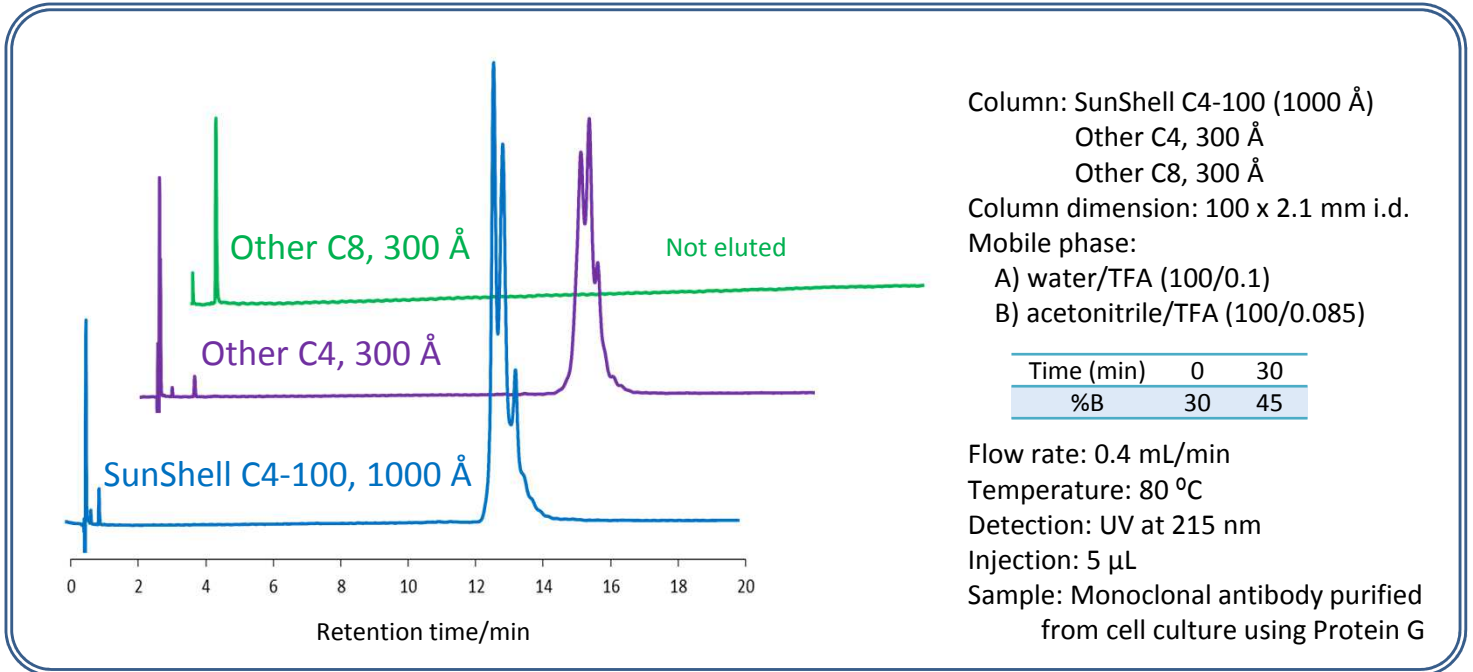
For Separation of Monoclonal Antibody



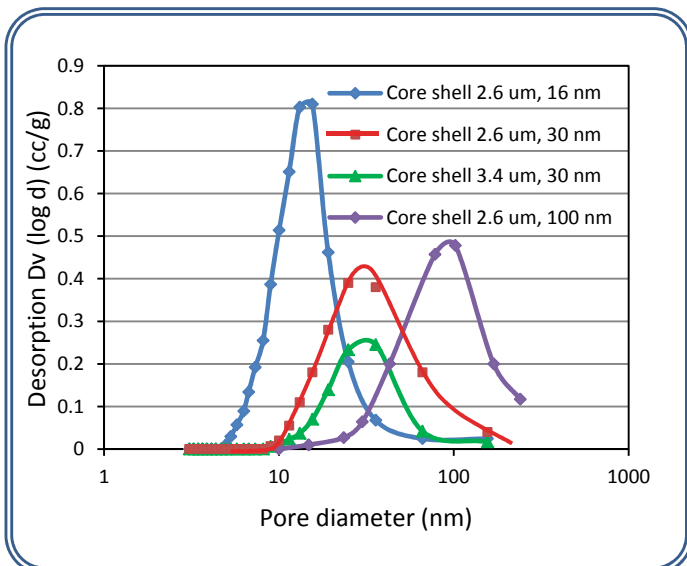
Characteristics of SunShell C4-100

| Packings | Core shell silica | | | | | Stationary phase | | | | | Column |
|-----------------|-------------------|-------------------|---------------|---------------------------|-----------------------|------------------|--------------|-------------|--------------------|----------------|----------------------------|
| | Particle size | Core size | Pore diameter | Thickness of porous layer | Specific surface area | Carbon loading | Bonded phase | End-capping | Available pH range | USP L category | Maximum operating pressure |
| SunShell C4-100 | 2.6 μm | 1.6 μm | 100 nm | 0.5 μm | 22 m ² /g | 0.6% | C4 | Yes | 1.5 - 9 | L26 | 60 MPa or 8,570 psi |

Separation of Monoclonal antibody (IgG) purified from cell culture using protein G



Pore size distribution of core shell silica



Ordering information of SunShell

| | Inner diameter (mm) | 2.1 | USP category |
|---------------------------------------|---------------------|----------------|--------------|
| | Length (mm) | Catalog number | |
| SunShell C4-100, 2.6 μm | 50 | C66941 | L26 |
| | 100 | C66961 | |
| | 150 | C66971 | |

