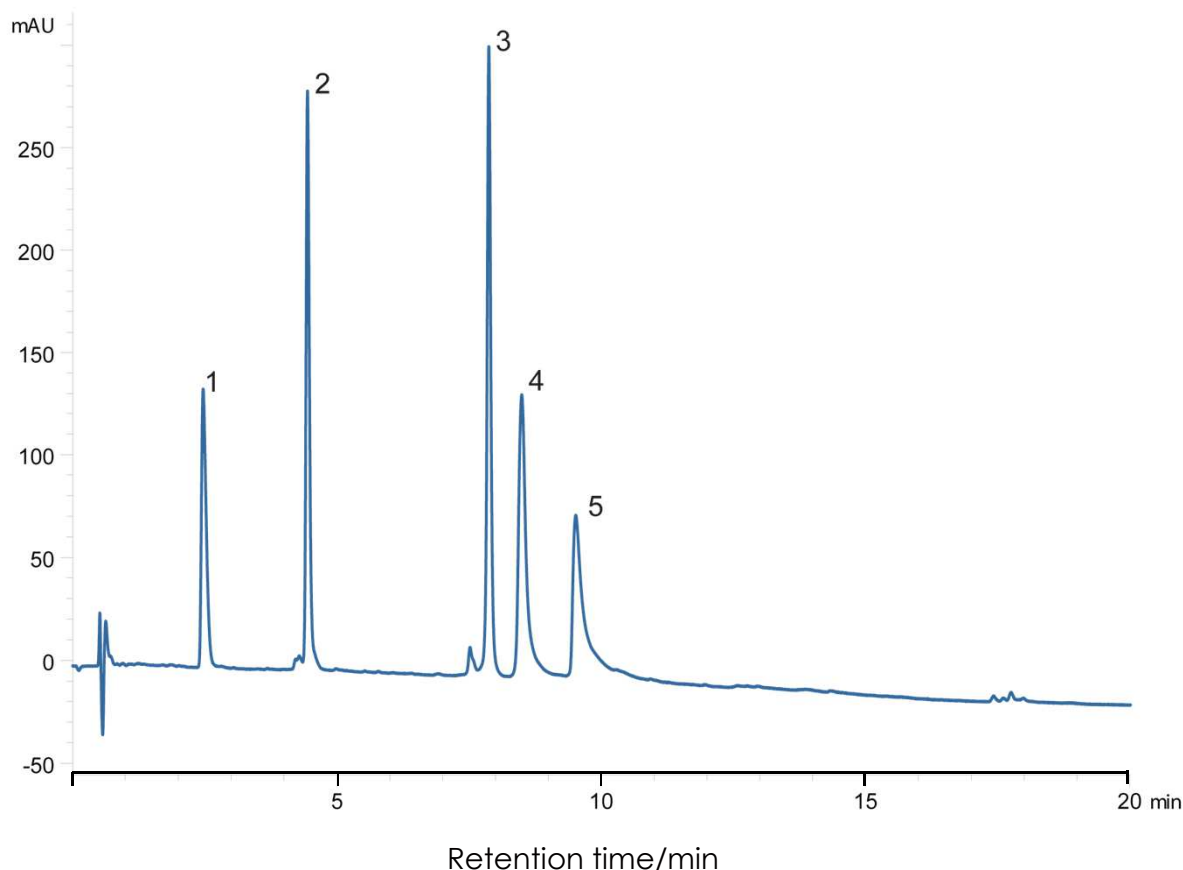


タンパク質の分離(3)

SunShell C18-30 2.6 μ m, 100 x 2.1 mm i.d.

Protein Mix using SunShell C18-30



Column: SunShell C18-30 2.6 μ m (30 nm), 100 x 2.1 mm

Mobile phase: A) 0.1% TFA in water

B) 0.1% TFA in acetonitrile

| | | | |
|-------------------|-----------|----|------|
| Gradient program: | Time(min) | 0 | 20 |
| | %B | 22 | 70.5 |

Flow rate: 0.50 mL/min

Temperature: 40 °C

Detection: UV@214 nm

Injection volume: 10 μ L,

Concentration: 0.01 μ g/ μ L each protein

Sample:

1. Angiotensin I
2. Ribonuclease A
3. Lysozyme
4. Transferrin
5. Bovine Serum Albumin