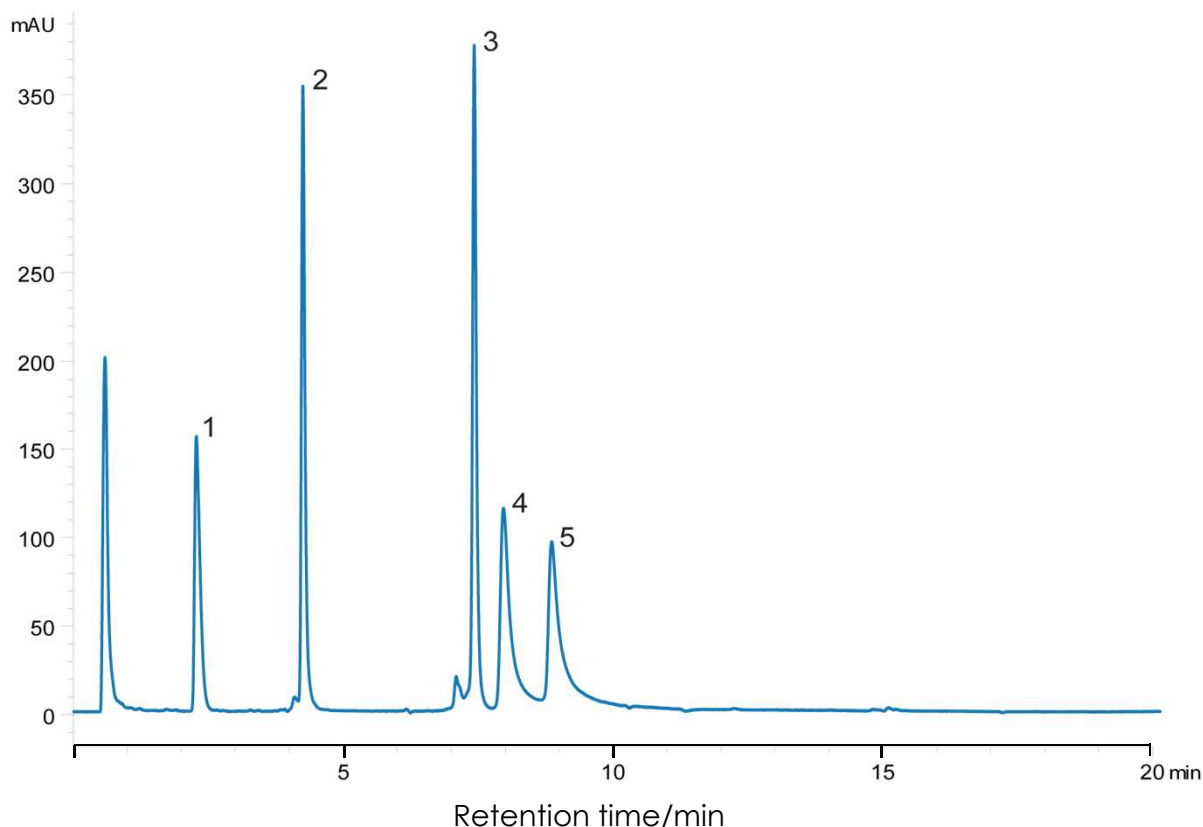


## タンパク質の分離(2)

SunShell C4-30 2.6  $\mu\text{m}$ , 100 x 2.1 mm i.d.

### Protein Mix using SunShell C4-30



Column: SunShell C4-30 2.6  $\mu\text{m}$  (30 nm), 100 x 2.1 mm

Mobile phase: A) 0.1% TFA in water

B) 0.1% TFA in acetonitrile

Gradient program:	Time(min)	0	20
	%B	22	70.5

Flow rate: 0.50 mL/min

Temperature: 40 °C

Detection: UV@214 nm

Injection volume: 10  $\mu\text{L}$

Concentration: 0.01  $\mu\text{g}/\mu\text{L}$  each protein

Sample:

1. Angiotensin I
2. Ribonuclease A
3. Lysozyme
4. Transferrin
5. Bovine Serum Albumin