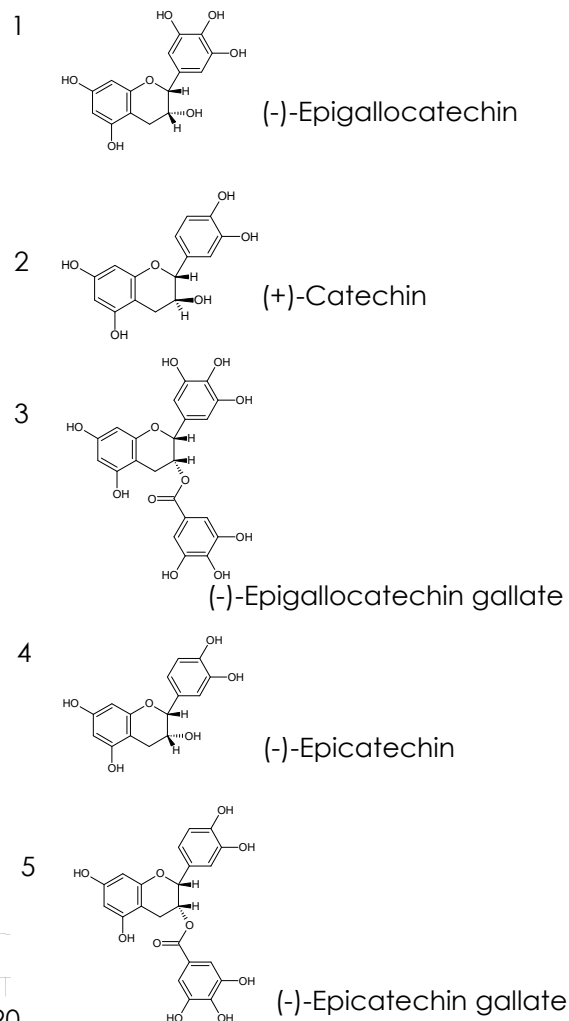
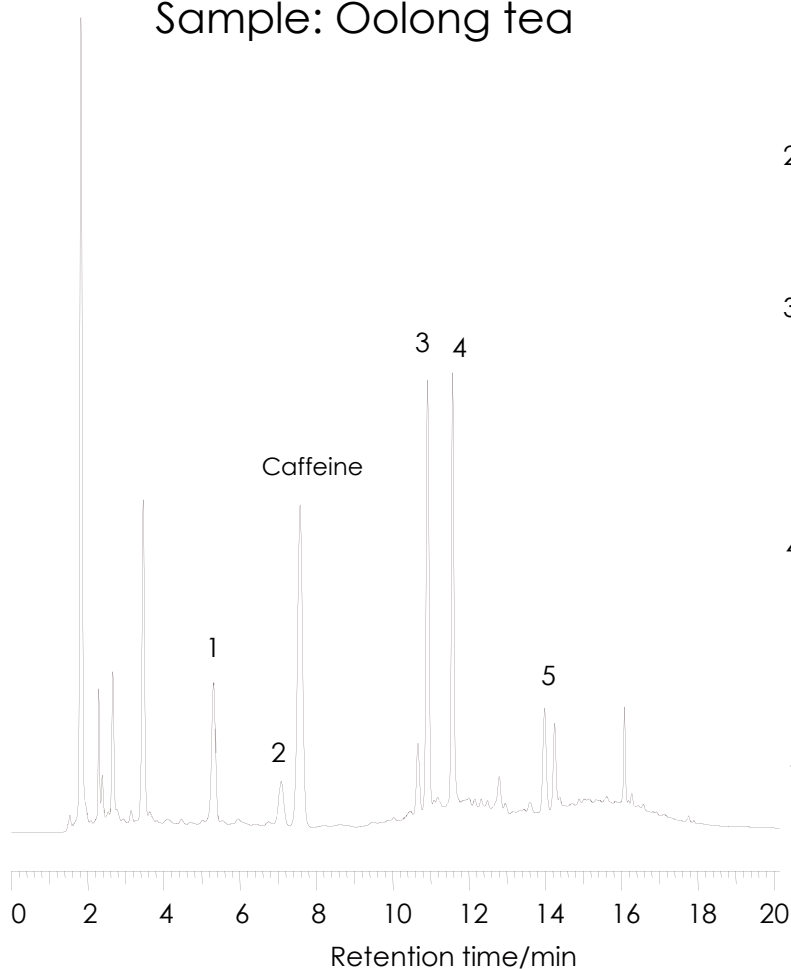


## カテキン類 (1)

## Catechins (1)

Sunniest C18 5 $\mu$ m, 150 x 4.6 mm i.d.

Sample: Oolong tea



Column: Sunniest C18 5  $\mu$ m, 150 x 4.6 mm i.d.

Mobile phase: A) H<sub>2</sub>O/CH<sub>3</sub>CN/85% H<sub>3</sub>PO<sub>4</sub> (95:5:0.05)

B) H<sub>2</sub>O/CH<sub>3</sub>CN/85% H<sub>3</sub>PO<sub>4</sub> (50:50:0.05)

Time (min)	0	5	8	10	15	20
%B	10	10	30	30	80	80

Flow rate: 1.0 mL/min

Temperature: 40 °C

Detection: UV@230 nm

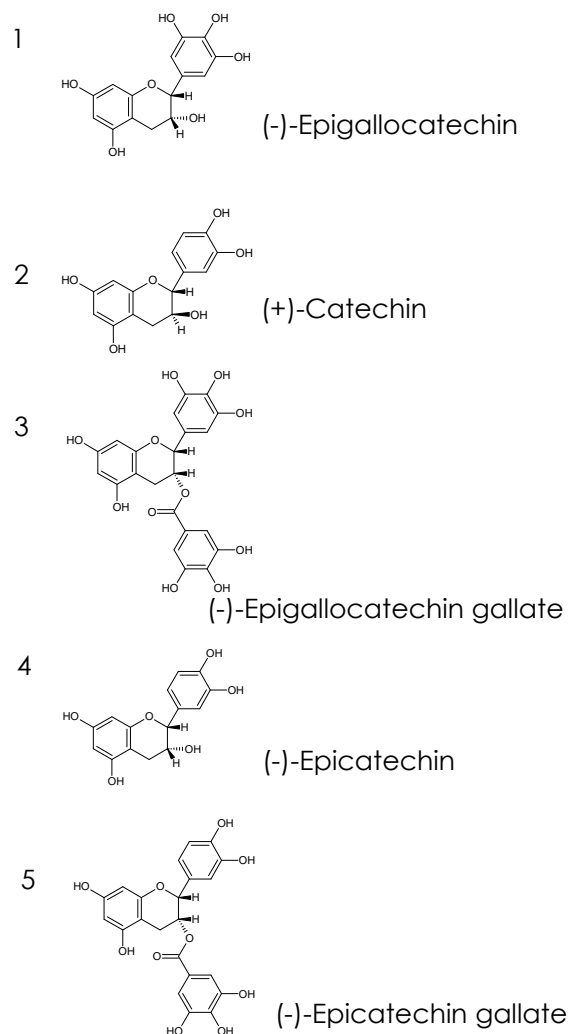
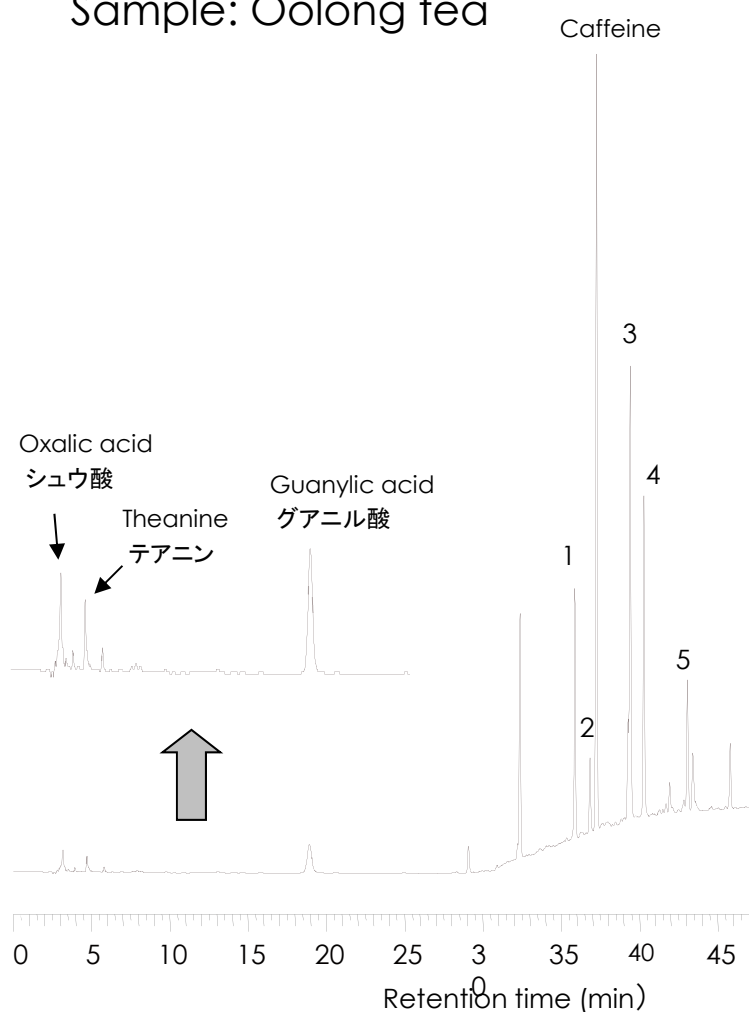
Injection volume: 10  $\mu$ L

## カテキン類 II

## Catechins II

Sunniest RP-AQUA 5 $\mu$ m, 150 x 4.6 mm i.d.

Sample: Oolong tea



Column: Sunniest RP-AQUA 5  $\mu$ m, 250 x 4.6 mm i.d.

Mobile phase: A) H<sub>2</sub>O/H<sub>3</sub>PO<sub>4</sub> (99.9:0.1)

B) CH<sub>3</sub>CN

Time (min)	0	20	60
%B	0	0	50

Flow rate: 1.0 mL/min

Temperature: 40 °C

Detection: UV@210 nm

Injection volume: 10  $\mu$ L