

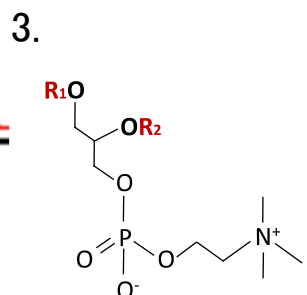
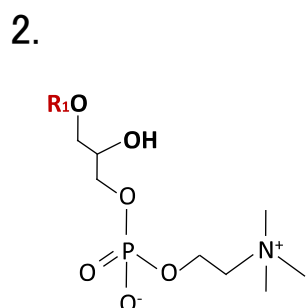
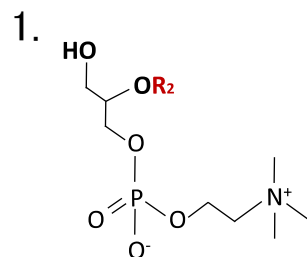
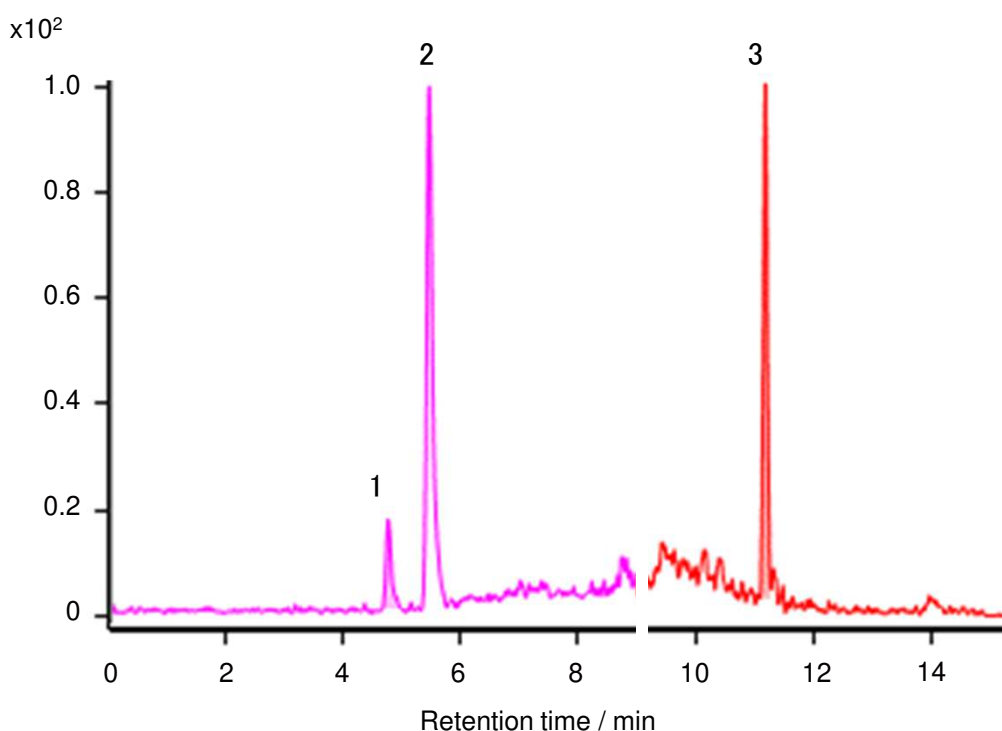
リン脂質, リゾリン脂質の分析

SunShell C18 2.6 μm , 150 x 4.6 mm i.d. ,

Phospholipids, Lysophospholipids

PS inert (Metal-free)

SunShell C18 2.6 μm , PS inert



Column : SunShell C18 3.0 x 150 mm, 2.6 μm , PS inert*

Mobile phase:

A) Acetonitrile:water = 6:4(0.1% formic acid, 10 mM ammonium acetate)

B) 2-Propanol (0.1% formic acid, 10 mM ammonium acetate)

Gradient program: shown right

Column temperature: 60°C, Flow rate: 0.6 mL/min

*"PS Inert" is a metal-free column hardware with hydrophobic coating

Sample:

1 = (Lysophosphatidylcholine) isomer1 : $\text{C}_{26}\text{H}_{45}\text{D}_7\text{NO}_7\text{P}$

2 = (Lysophosphatidylcholine) isomer2 : $\text{C}_{26}\text{H}_{45}\text{D}_7\text{NO}_7\text{P}$

3 = Phosphatidylcholine : $\text{C}_{42}\text{H}_{75}\text{D}_7\text{NO}_{13}\text{P}$



Time (min)	B.Conc(%)
0 - 1	0
1 - 5	0 → 40
5 - 7	40 → 64
7 - 12	64
12 - 12.5	64 → 82.5
12.5 - 25	95
25 - 27	95

提供: 地方独立行政法人大阪産業技術研究所 佐藤先生