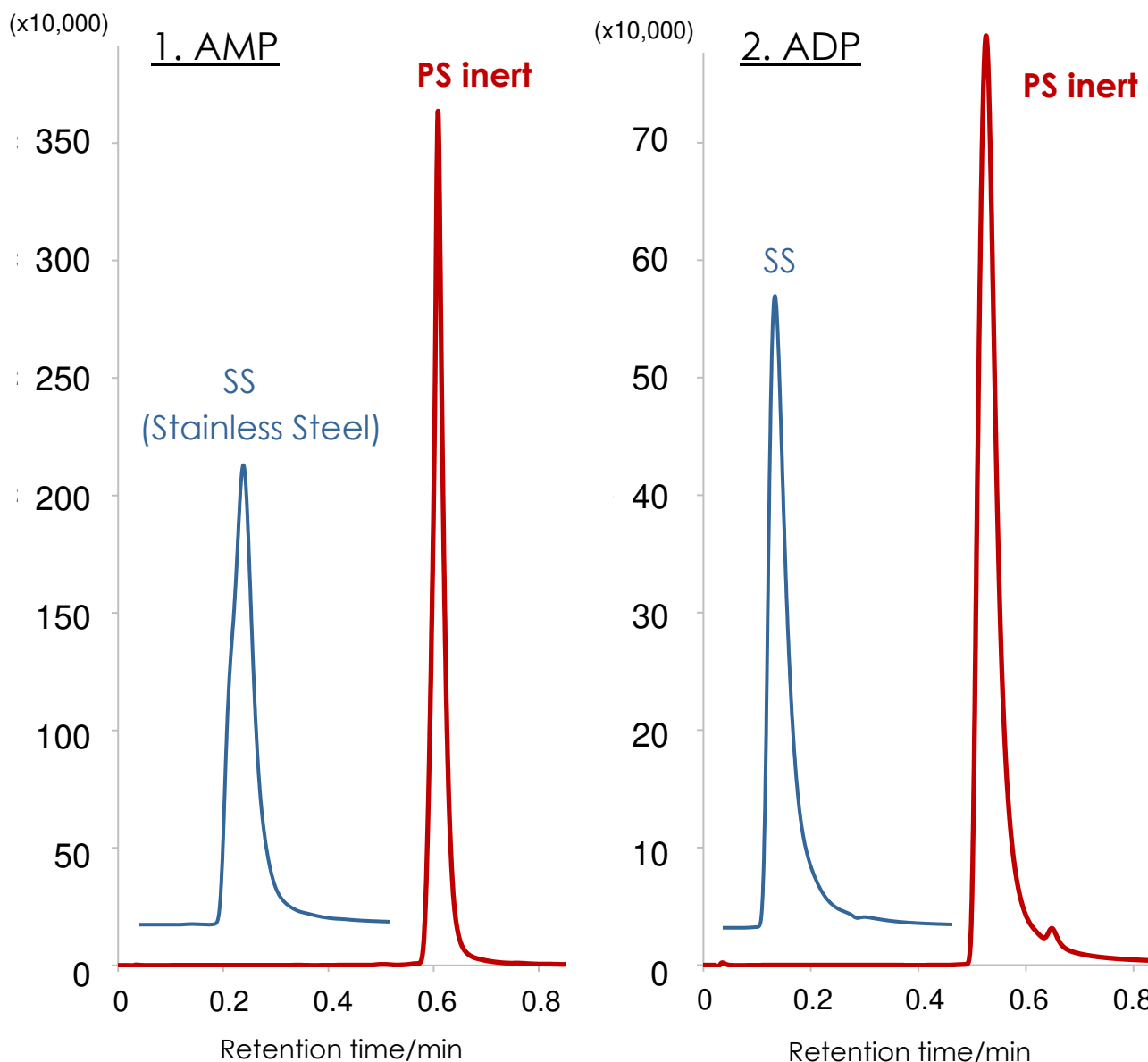


リン酸化合物と、PSイナートカラムの低吸着効果

Phosphates on PS inert column

SunShell C18 2.6 μm , 100 x 2.1 mm i.d.

SS / PS inert



Column:

SunShell C18 2.6 μm , 100 x 2.1 mm i.d. SS / PS inert

Mobile phase:

Acetonitrile : 0.1% formic acid in Water = 1 : 99

Detection: UV@254 nm

Flow rate: 0.45 mL/min

Column Temperature: 40 °C

Injection Volume: 2 μL

Instrument: Conventional HPLC system (Stainless Steel Tubing)

*ステンレス配管を用いたHPLC装置使用

Sample:

1 = AMP

2 = ADP

