

A Novel End-capping for Reversed Phase for LC/MS SunShell and Sunniest column



Etsuko Shearer¹ Norikazu Nagae², and Tomoyasu Tuskamoto²

1 BioNik Inc. 3397-19 Obuchi, Fuji, Shizuoka 417-0801 Japan

2 ChromaNik Technologies Inc. Namiyoke, Minato-ku, Osaka 552-0001 Japan

*Corresponding author email: nagae@chromanik.co.jp



www.chromanik.co.jp

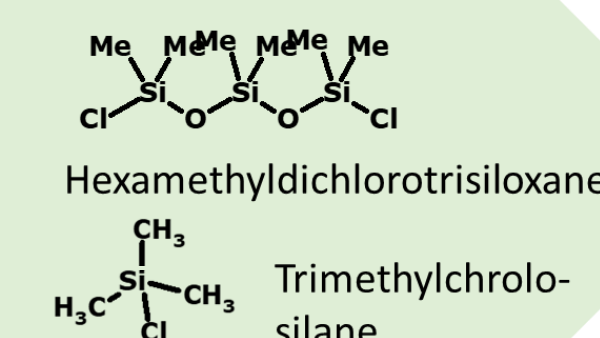


https://pyvot.tech/ Distributor in the US

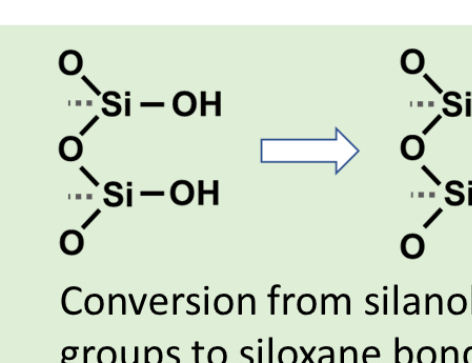
An End-capping has been recognized to be an important factor for a silica based reversed phase column. In this study, not only bonding with an end-capping reagent but also conversion of silanol groups to siloxane bond by heating were evaluated as an end-capping.

Proposed end-capping

Double end-capping



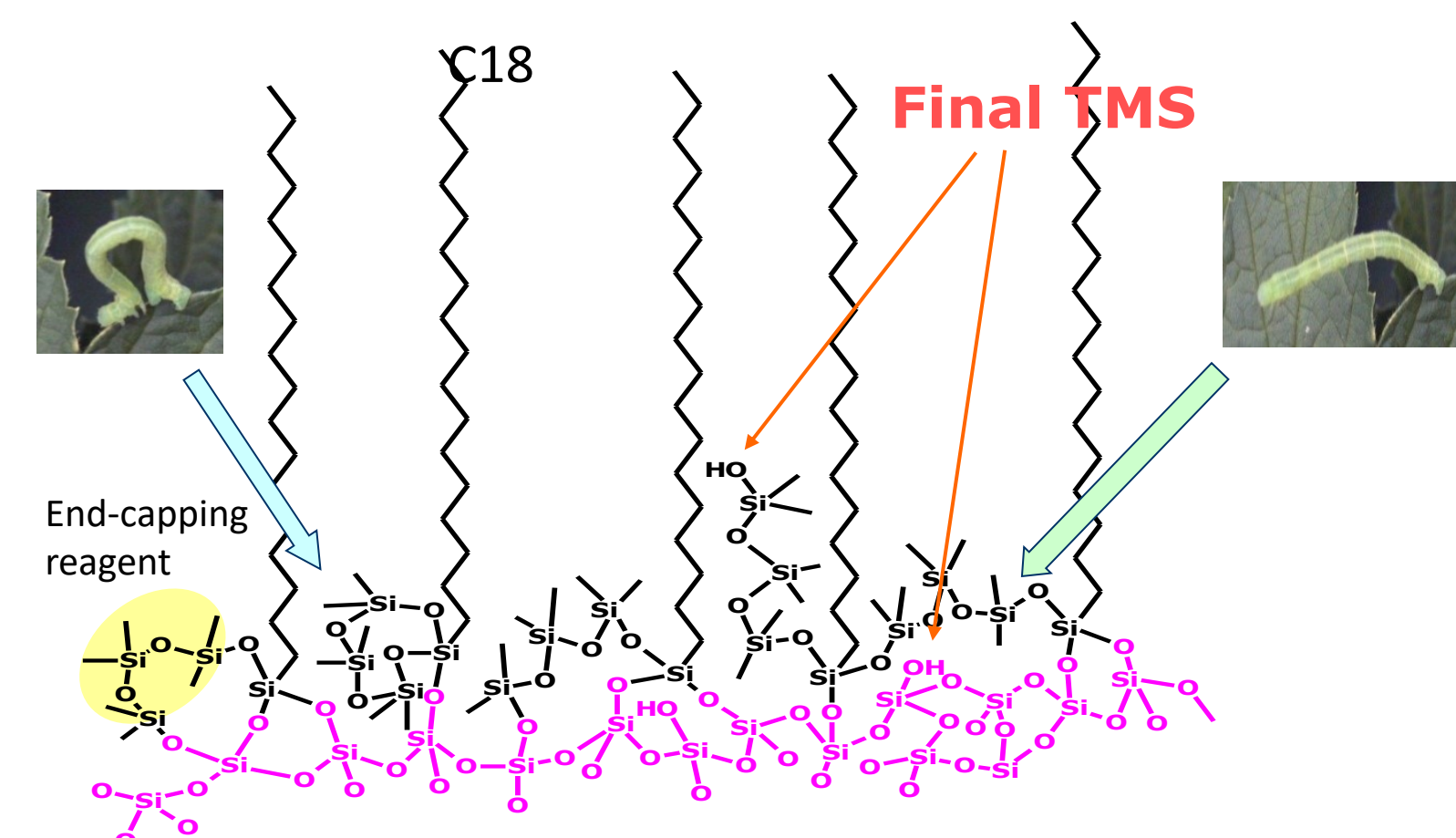
High temperature end-capping



➤ Low bleeding

➤ High stability

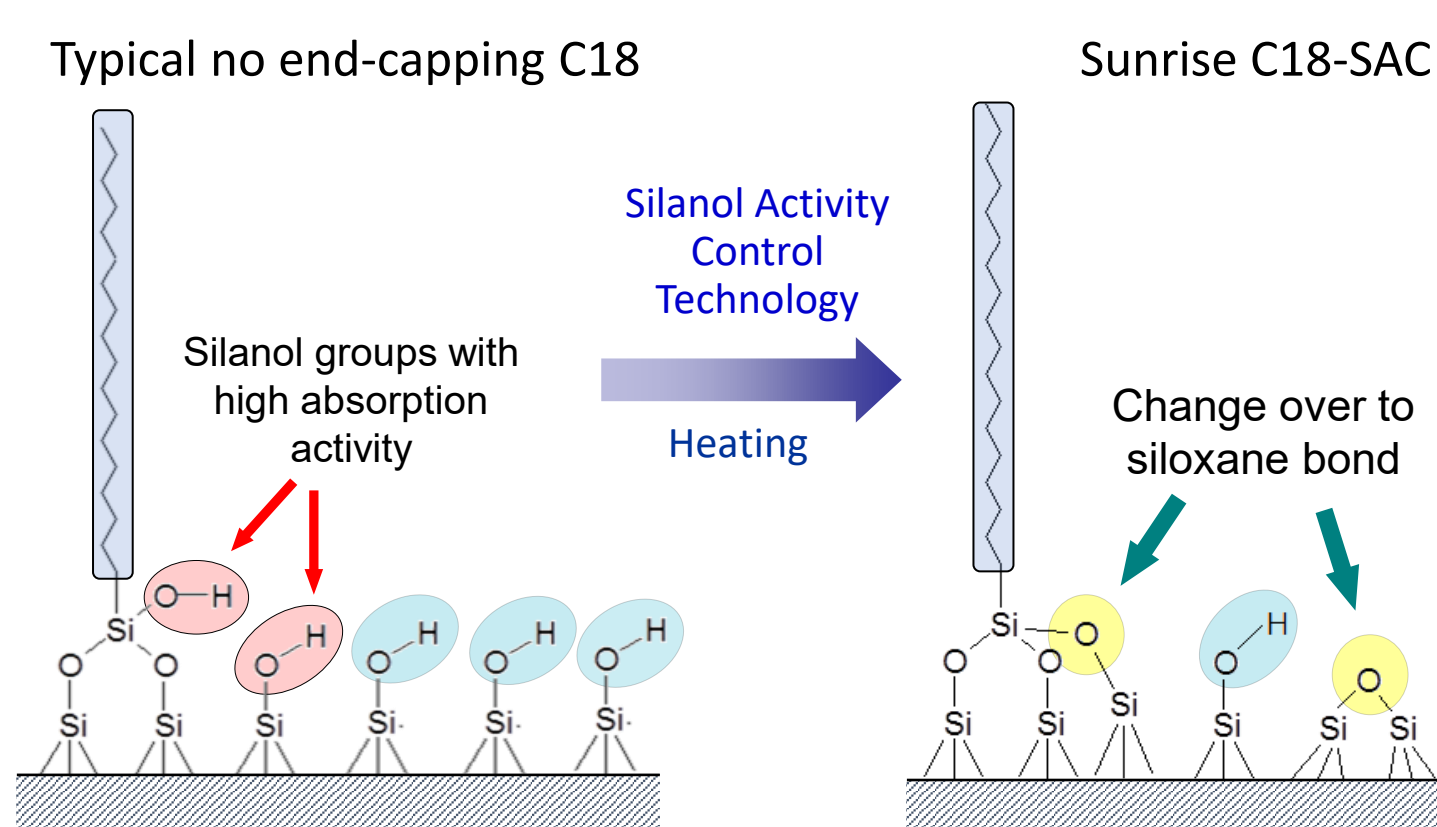
End-capping with hexamethyldichlorotrisiloxane and TMS on C18 silica



End-capping reagent moves like a *Geometrid caterpillar*, so that a functional group on the tip of the arm can bond with a silanol group which is located anywhere.

We named this end-capping method as Sunniest double end-capping.

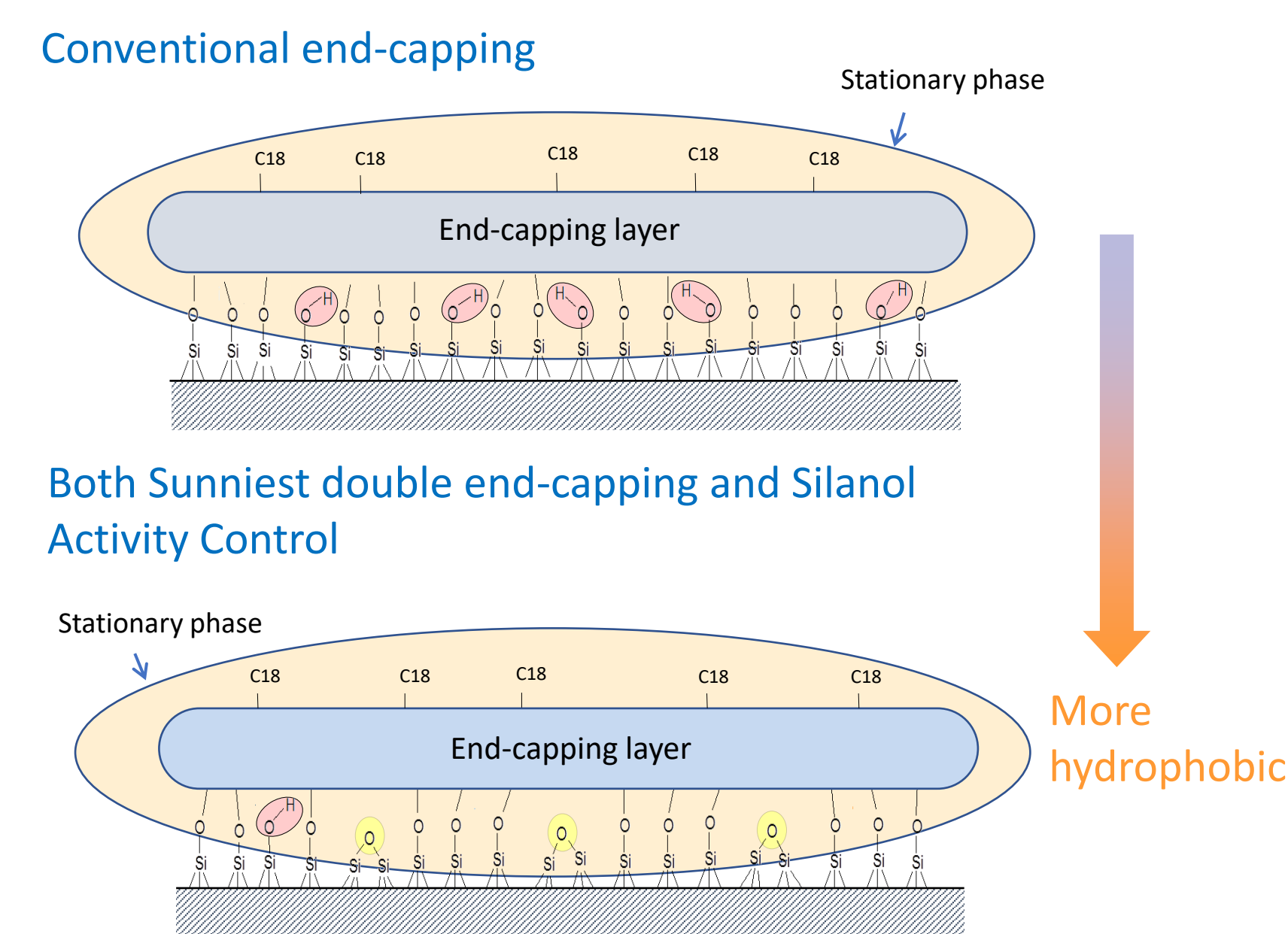
Another end-capping with heating on C18 silica, reduce of silanol groups



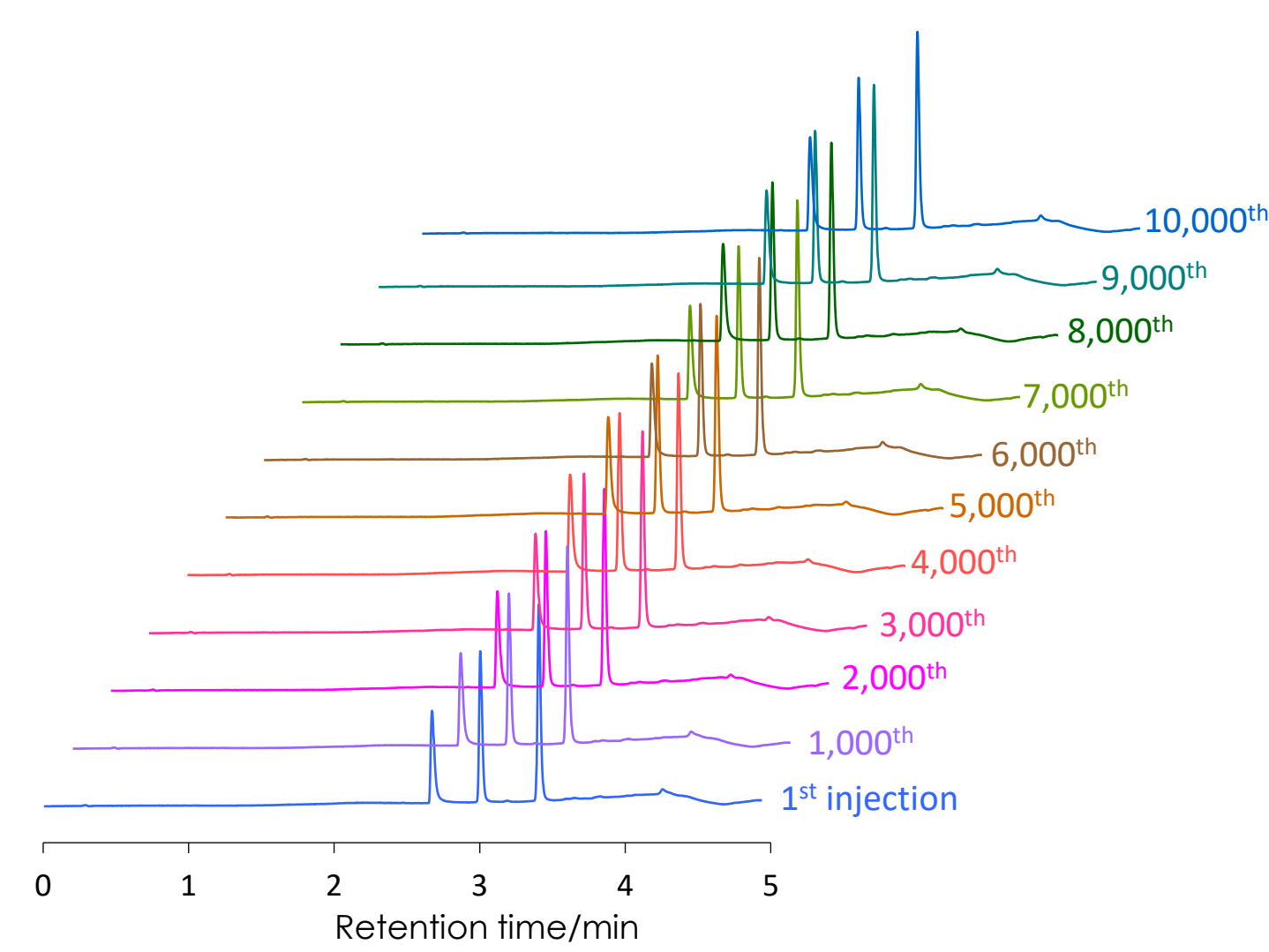
- H Non hydrated silanol group by influence of hydrophobicity of alkyl groups
- H Hydrated silanol group without influence of alkyl groups

A basic compound shows no tailing on Sunrise C18-SAC because hydrated silanol groups don't make a basic compound tailing as well as silica column on HILIC mode shows no tailing for a basic compound.

Comparison of 2 kinds of end-capping



Stability under acidic pH condition



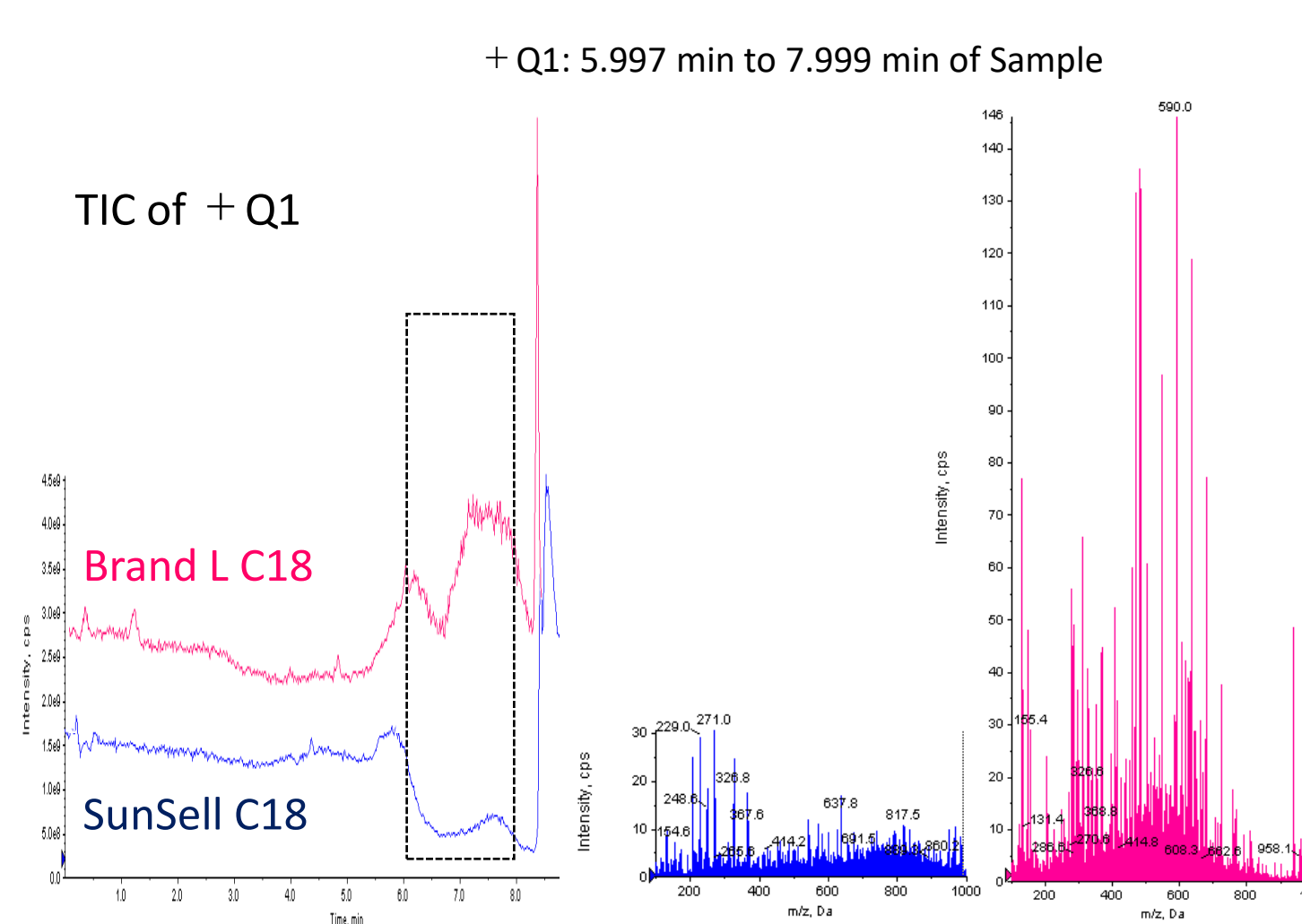
Column: SunShell C18 2.6 µm, 50 x 2.1 mm
Mobile phase: A) 0.1% trifluoroacetic acid pH 2.0
B) Acetonitrile

Gradient program:

Time (min)	0	3	3.1	5
% B	10	90	10	10

Flow rate: 0.5 mL/min
Temperature: 40 °C
Detection: UV@270nm
Injection volume: 0.5 µL
Sample: 1=Benzydamin (0.5 mg/mL),
2=Ketoprofen (0.04 mg/mL),
3=Indomethacin (0.05 mg/mL)

Bleeding test using LC/MS



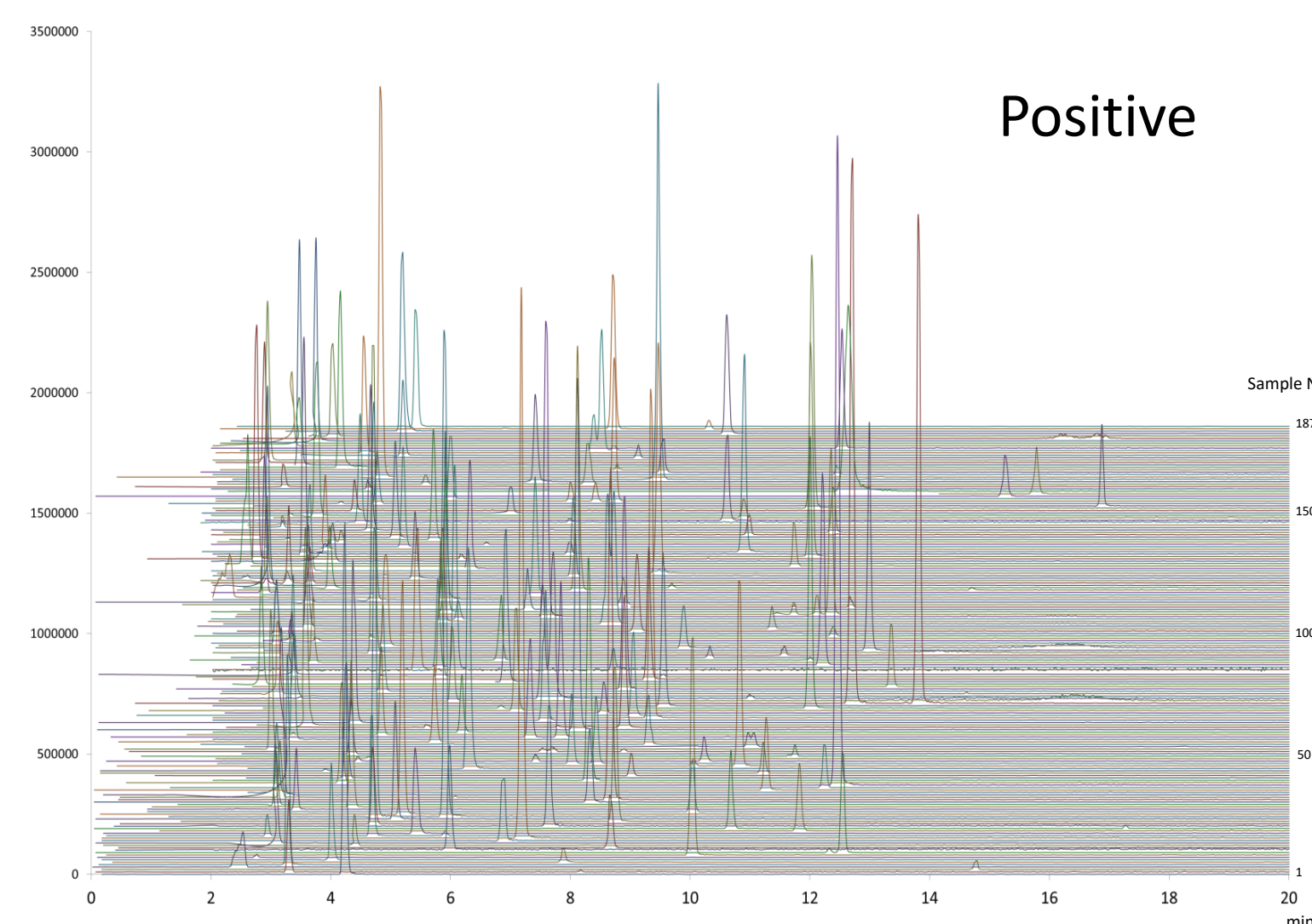
Column size: 50 x 2.1 mm
Mobile phase: A) 0.1% acetic acid
B) Acetonitrile

Gradient program:

Time (min)	0	1	5	7
% B	5	5	100	100

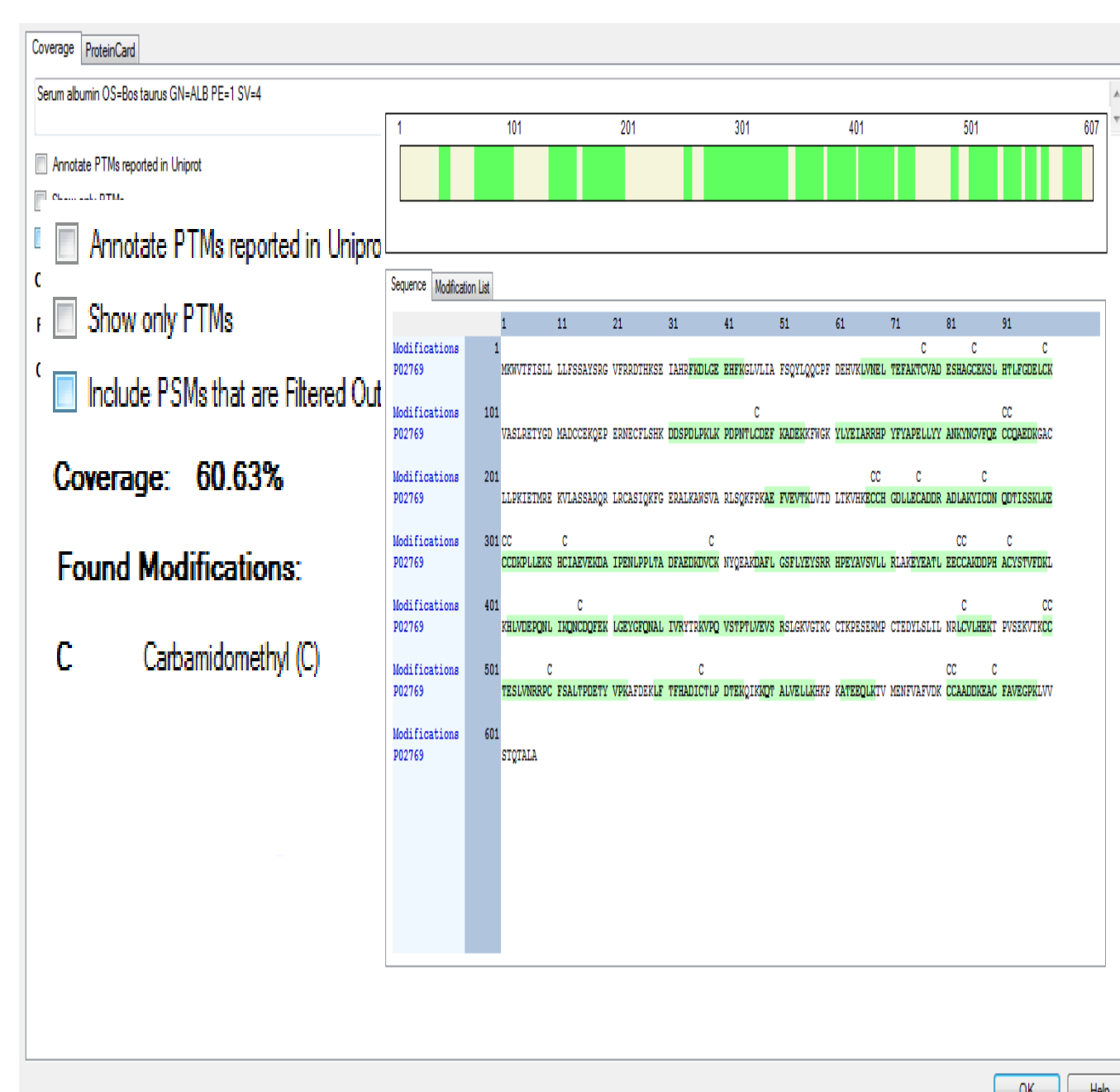
Flow rate: 0.4 mL/min
Temperature: 40 °C
MS : ABI API-4000
Ionization: Turboionspray (cation)
Measurement mode: Q1 Scan m/z 100-1000

Simultaneous Analysis of Pesticide (LC/MS)



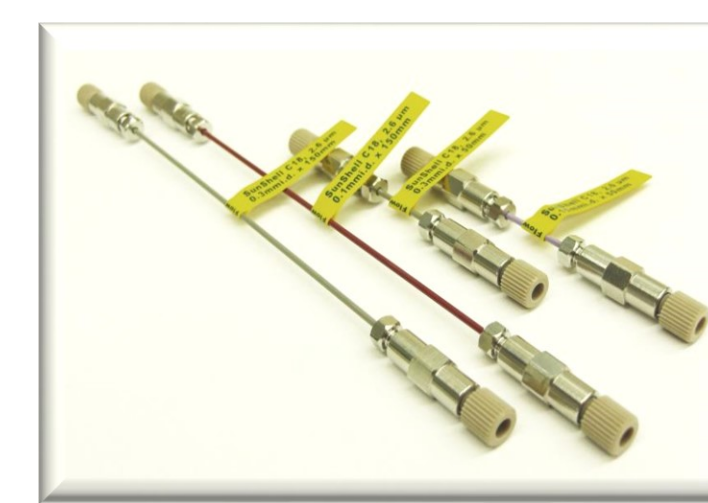
Column: SunShell C18 2.6 µm, 100 x 2.1 mm
Mobile phase: A) 0.5 mM Ammonium acetate in H₂O
B) 0.5 mM Ammonium acetate in CH₃OH
A/B = 95/5 - 1 min - 50/50 - 14 min - 2/98 - 5 min - 2/98 - 0.1 min - 95/5 - (Equilibrating, 10 min), v/v
Flow rate: 0.2 mL/min
Temperature: 40 °C
Detection: LC/MS/MS (QTRAP®4500: ESI, MRM)
Injection volume: 5 µL (STD 10ppb)

IDA measurement using SunShell C18, 2.6 µm 150 x 0.075 mm i.d. and Nano LC/MS



Sample: Tryptic digest of BSA, 30 µg on column
Detection: QTRAP5500
Detection mode: IDA measurement
HPLC: Ultimate 3000 RSLC nano
Trap column: Acclaim PepMap 100, 3 µm, 20 x 0.075 mm i.d.
Analytical column: SunShell C18, 2.6 µm, 150 x 0.075 mm i.d.
Mobile phase: To trap column, 0.1% TFA (Sample load)
To anal. Column, A) 0.1% Formic acid, B) 0.1% Formic acid/Acetonitrile=20/80
Gradient in 25 min

Courtesy of a pharmaceutical company in Japan



After verification with the database, the sequence identification rate of BSA was over 60%, which was a higher identification rate than conventional nano-columns.

Conclusion

- ◆ Hexamethyldichlorotrisiloxane was used as an end-capping reagent for a first end-capping step. Then trimethylchlorosilane (TMS) was used as an end-capping reagent for a second end-capping step.
- ◆ Silanol groups were changed to siloxane bonding by heating on C18 silica.
- ◆ Stability under acidic pH condition was improved by a proposed end-capping.