

核酸塩基の分離 (6)

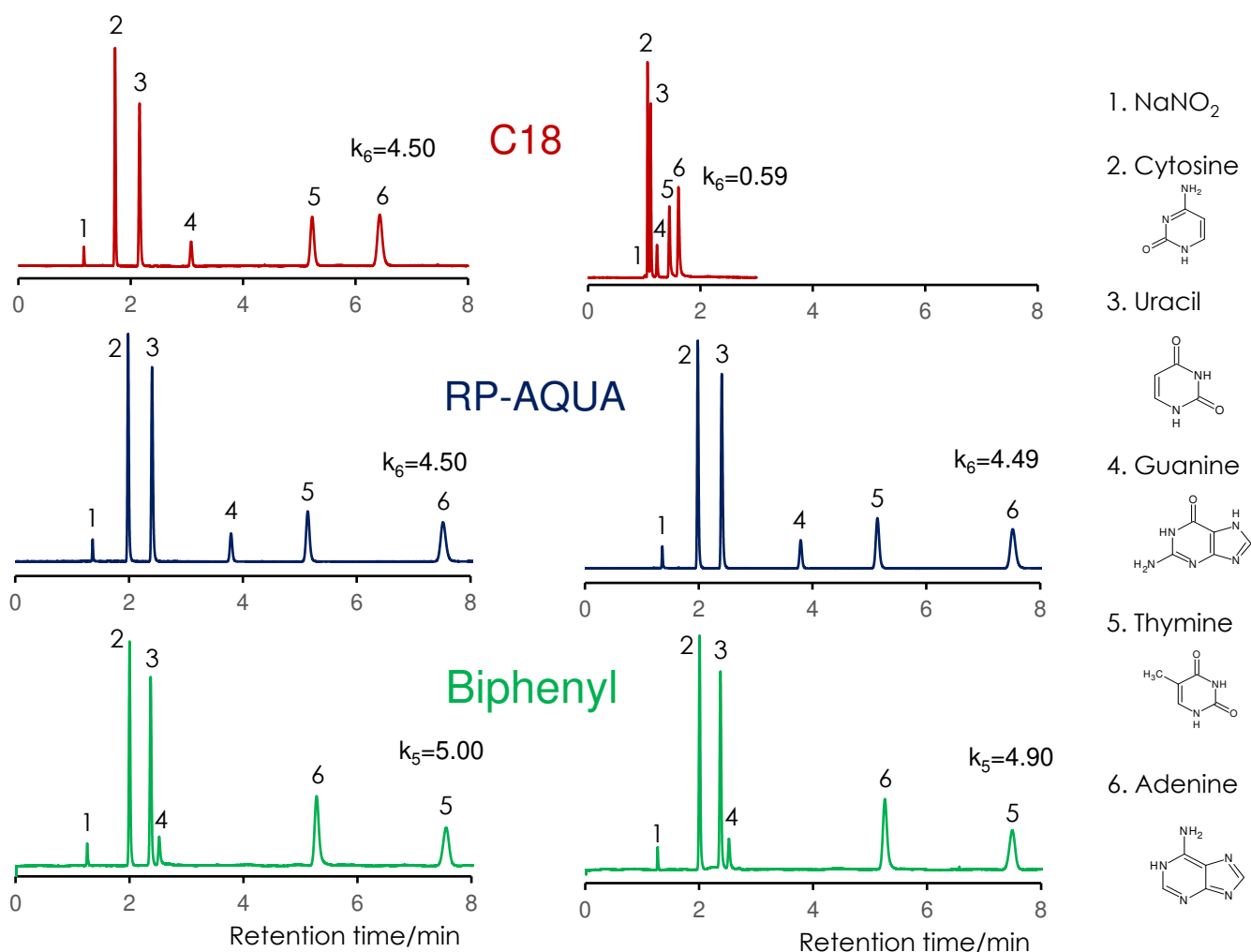
SunShell C18 2.6 μm , 150 x 4.6 mm i.d.

SunShell RP-AQUA 2.6 μm , 150 x 4.6 mm i.d.

SunShell Biphenyl 2.6 μm , 150 x 4.6 mm i.d.

Nucleic acid bases (6)

Initial \longrightarrow After stopping a pump for 1 hour



Column: SunShell C18 2.6 μm , 150 x 4.6 mm (pore size: 9 nm)

SunShell RP-AQUA 2.6 μm , 150 x 4.6 mm (pore size: 16 nm)

SunShell Biphenyl 2.6 μm , 150 x 4.6 mm (pore size: 9 nm)

Mobile phase: 10 mM ammonium acetate pH6.8

Flow rate: 1.0 mL / min

Temperature: 40 $^{\circ}\text{C}$

Detection: UV@250 nm

Sample: 1 = Sodium nitrite, 2 = Cytosine, 3 = Uracil, 4 = Guanine, 5 = Thymine, 6 = Adenine

★Both RP-AQUA and Biphenyl columns show no decrease in the retention time under 100% aqueous conditions.