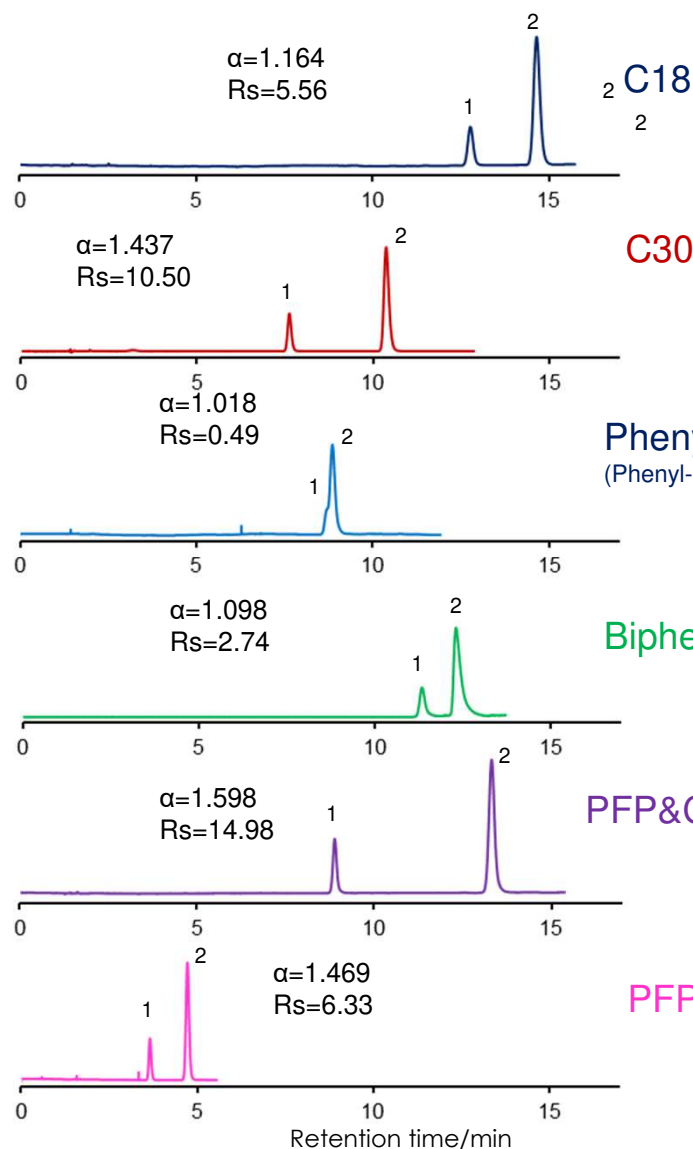


cis, trans-スチルベンの分離(2)

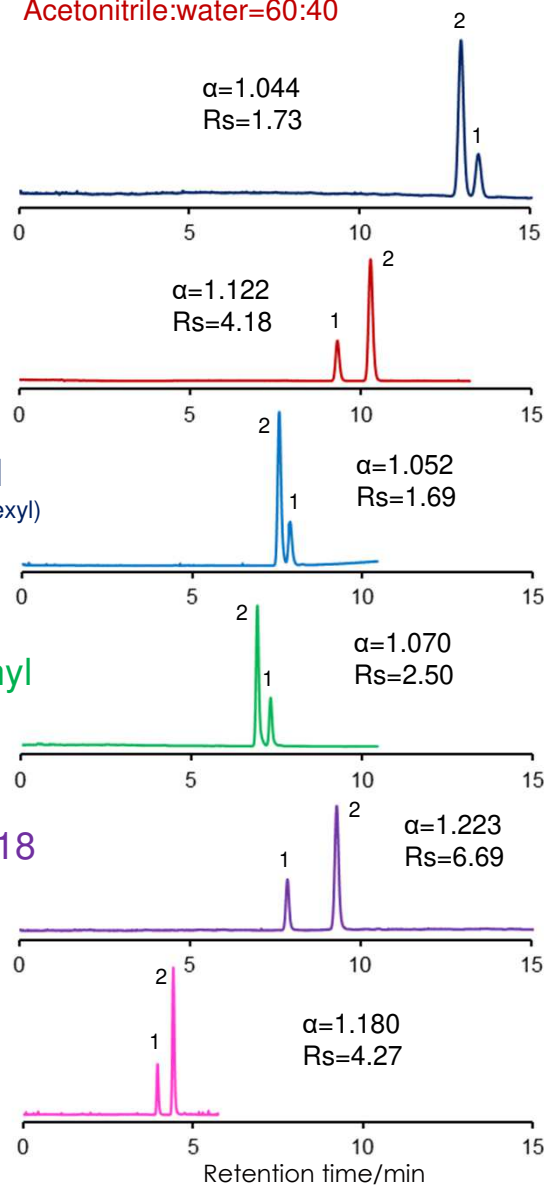
Stilbene (2)

SunShell C18 2.6 μ m, 150 x 4.6 mm i.d.
 SunShell C30 2.6 μ m, 150 x 2.1 mm i.d.
 SunShell Phenyl 2.6 μ m, 150 x 4.6 mm i.d.
 SunShell Biphenyl 2.6 μ m, 150 x 4.6 mm i.d.
 SunShell PFP&C18 2.6 μ m, 150 x 4.6 mm i.d.
 SunShell PFP 2.6 μ m, 150 x 4.6 mm i.d.

Methanol:water=75:25



Acetonitrile:water=60:40



Column: SunShell C18 2.6 μ m 150 x 4.6 mm
 SunShell C30 2.6 μ m 150 x 2,1 mm
 SunShell Phenyl 2.6 μ m 150 x 4.6 mm
 SunShell Biphenyl 2.6 μ m 150 x 4.6 mm
 SunShell PFP&C18 2.6 μ m 150 x 4.6 mm
 SunShell PFP 2.6 μ m 150 x 4.6 mm
 Mobile phase: Methanol:water=75:25
 Acetonitrile:water=60:40
 Flow rate: 1.0 mL/min and 0.2 mL/mn for only C30
 Temperature: 40 °C
 Detection: UV@230 nm

Sample: 1 = cis-Stilbene, 2 = trans-Stilbene

