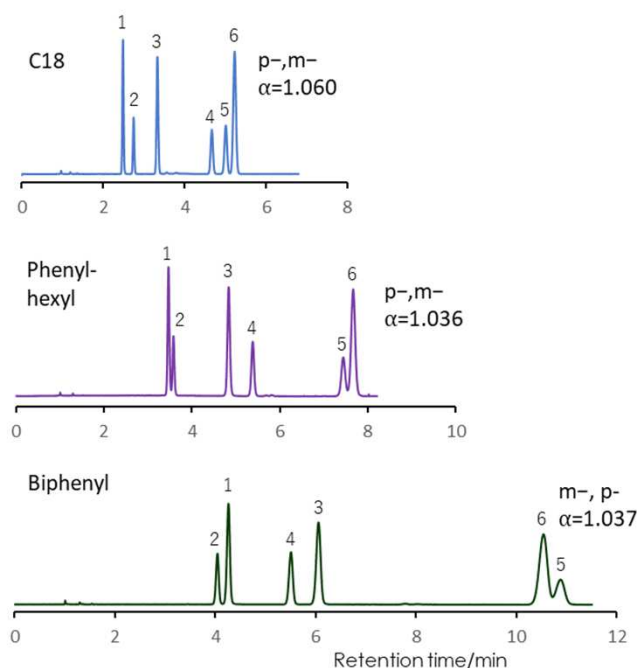


## 馬尿酸類の分離 (イオンペアー試薬) (2)

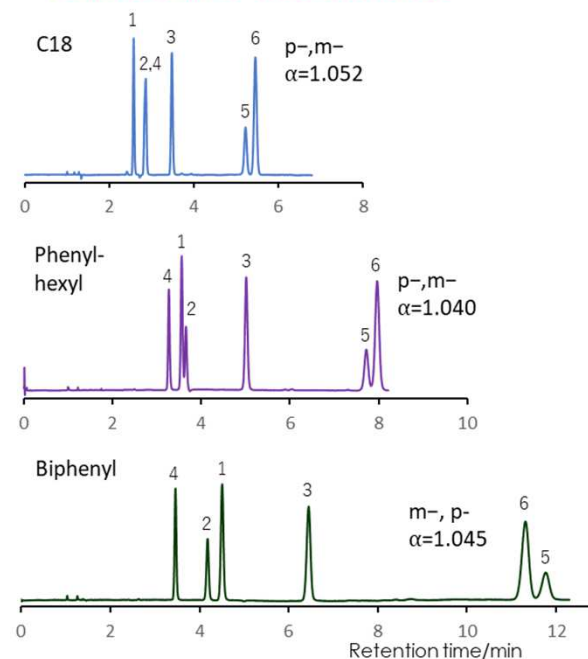
SunShell C18 2.6  $\mu$ m, 150 x 4.6 mm i.d.  
SunShell Phenyl 2.6  $\mu$ m, 150 x 4.6 mm i.d.  
SunShell Biphenyl 2.6  $\mu$ m, 150 x 4.6 mm i.d.  
Sunnest C18 5  $\mu$ m, 250 x 4.6 mm i.d.

### Hippuric acid (2)

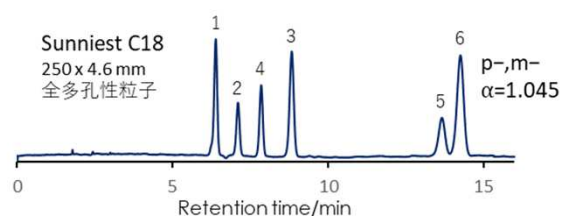
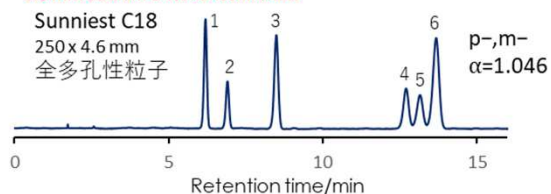
2 mM Sodium 1-Nonanesulfonate



2 mM Sodium 1-Octanesulfonate



0.5 mM Sodium 1-Nonanesulfonate



Column: SunShell C18 2.6  $\mu$ m 150 x 4.6 mm  
SunShell Phenyl 2.6  $\mu$ m 150 x 4.6 mm  
SunShell Biphenyl 2.6  $\mu$ m 150 x 4.6 mm  
Sunnest C18 5  $\mu$ m 250 x 4.6 mm

Mobile phase: 2-Propanol:10 mM KH<sub>2</sub>PO<sub>4</sub>, 2 mM Sodium 1-Nonanesulfonate (pH2.5; H<sub>3</sub>PO<sub>4</sub>)=10:90  
2-Propanol:10 mM KH<sub>2</sub>PO<sub>4</sub>, 2 mM Sodium 1-Octanesulfonate (pH2.5; H<sub>3</sub>PO<sub>4</sub>)=10:90

Flow rate: 1.0 mL/min

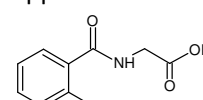
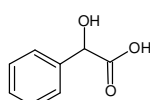
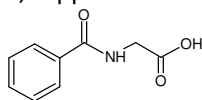
Temperature: 40 °C

Detection: UV@210 nm

Sample: 1=, Hippuric acid

2=Mandelic acid,

3= o-Methylhippuric acid



4= Creatinine,

5=p-Methylhippuric acid,

6=m-Methylhippuric acid

