

## 馬尿酸類の分離 (1)

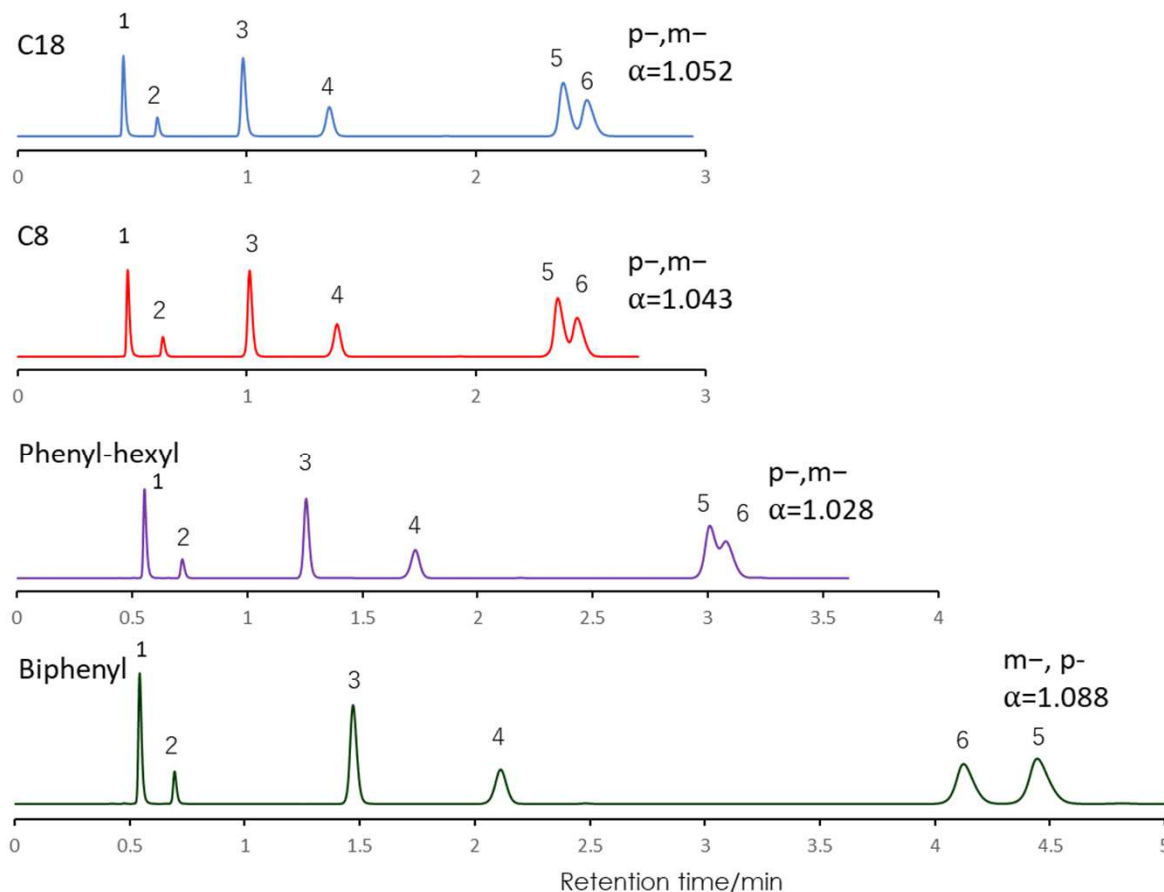
SunShell C18 2.6 μm, 100 x 2.1 mm i.d.

SunShell C8 2.6 μm, 100 x 2.1 mm i.d.

SunShell Phenyl 2.6 μm, 100 x 2.1 mm i.d.

SunShell Biphenyl 2.6 μm, 100 x 2.1 mm i.d.

## Hippuric acid (1)



Column: SunShell C18 2.6 μm 100 x 2.1 mm

SunShell C8 2.6 μm 100 x 2.1 mm

SunShell Phenyl 2.6 μm 100 x 2.1 mm

SunShell Biphenyl 2.6 μm 100 x 2.1 mm

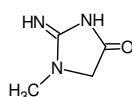
Mobile phase: 2-Propanol:20 mM Ammonium acetate pH6.8=3:97

Flow rate: 0.4 mL/min

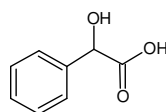
Temperature: 40 °C

Detection: UV@230 nm

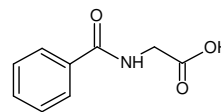
Sample: 1=Creatinine,



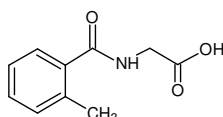
2=Mandelic acid,



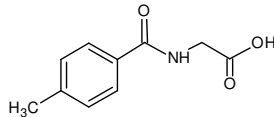
3=Hippuric acid



4=o-Methylhippuric acid,



5=p-Methylhippuric acid,



6=m-Methylhippuric acid

