

o-, *m*-, *p*-メチル馬尿酸の分離 (1)

o-, *m*-, *p*-Methylhippuric acid (1)

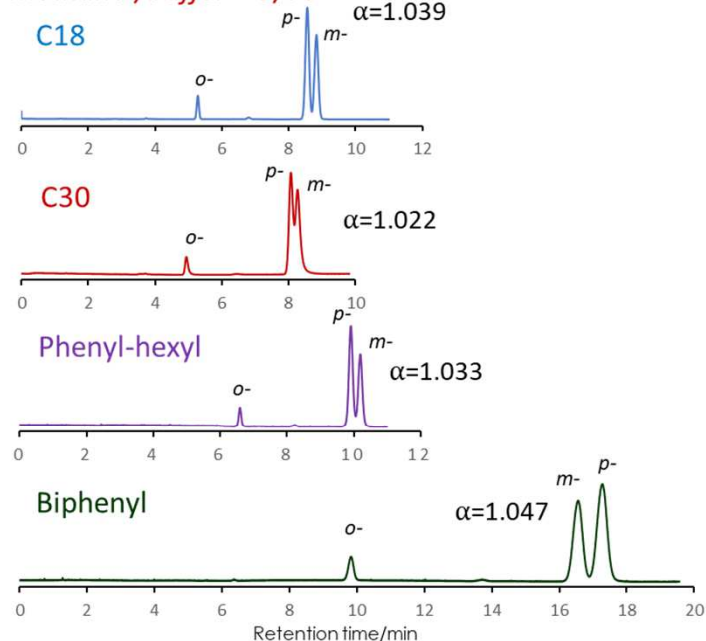
SunShell C18 2.6 μm, 150 x 4.6 mm i.d.

SunShell C30 2.6 μm, 150 x 2.1 mm i.d.

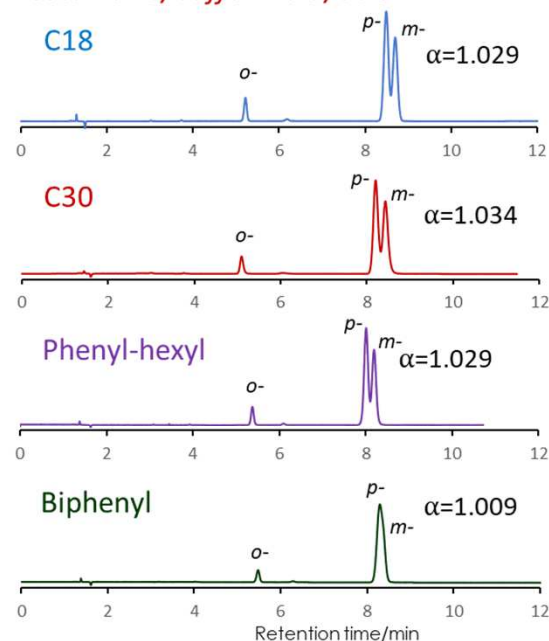
SunShell Phenyl 2.6 μm, 150 x 4.6 mm i.d.

SunShell Biphenyl 2.6 μm, 150 x 4.6 mm i.d.

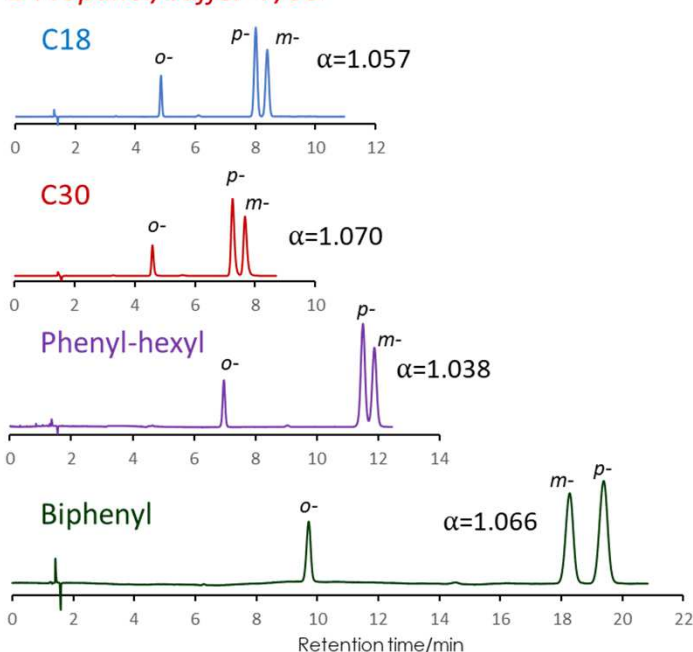
Methanol/buffer=25/75



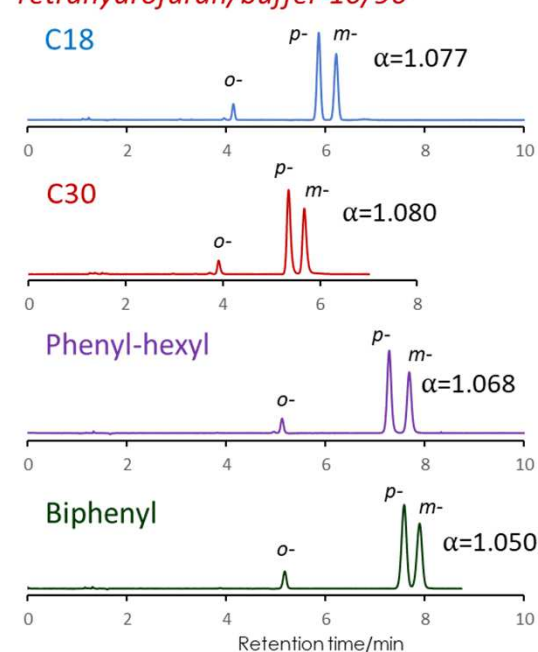
Acetonitrile/buffer=13.5/86.5



2-Propanol/buffer=7/93



Tetrahydrofuran/buffer=10/90



Column: SunShell C18 2.6 μm 150 x 4.6 mm i.d.
 SunShell C30 2.6 μm 150 x 2.1 mm i.d.
 SunShell Phenyl 2.6 μm 150 x 4.6 mm i.d.
 SunShell Biphenyl 2.6 μm 150 x 4.6 mm i.d.

Mobile phase: Organic solvent/25 mM phosphate buffer pH3.0
 Flow rate: 1.0 mL/min, 0.2 mL/min for only C30

Temperature: 40 °C
 Detection: UV@230 nm
 Sample: *o*-, *m*-, *p*-methylhippuric acid

