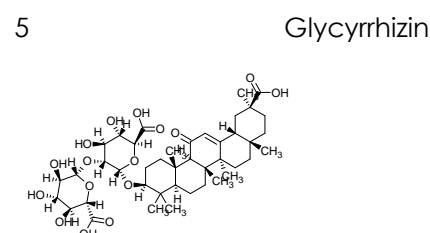
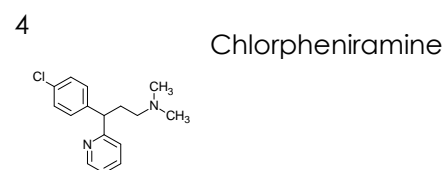
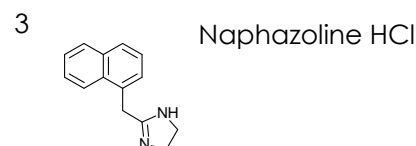
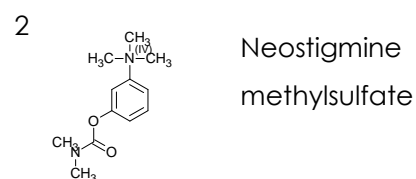
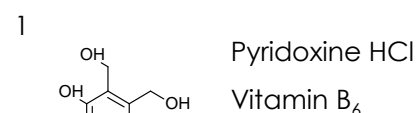
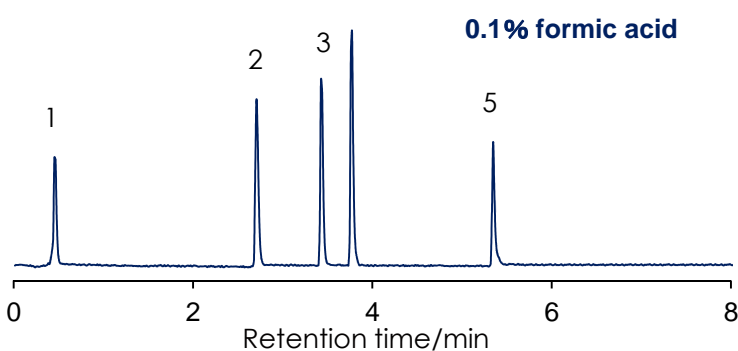
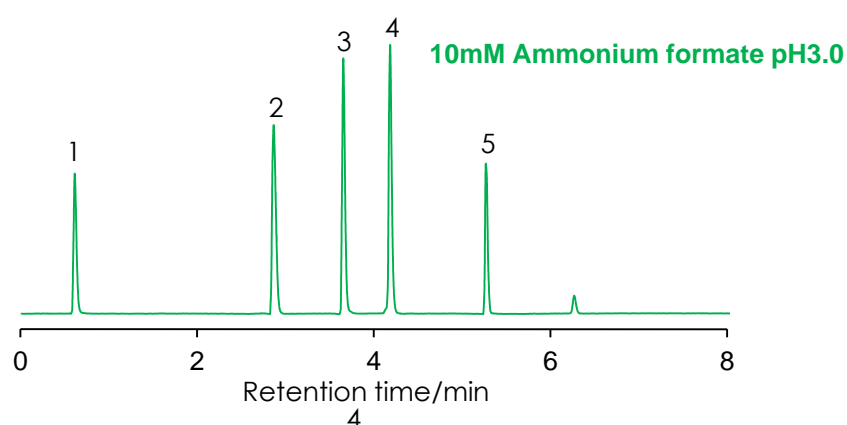
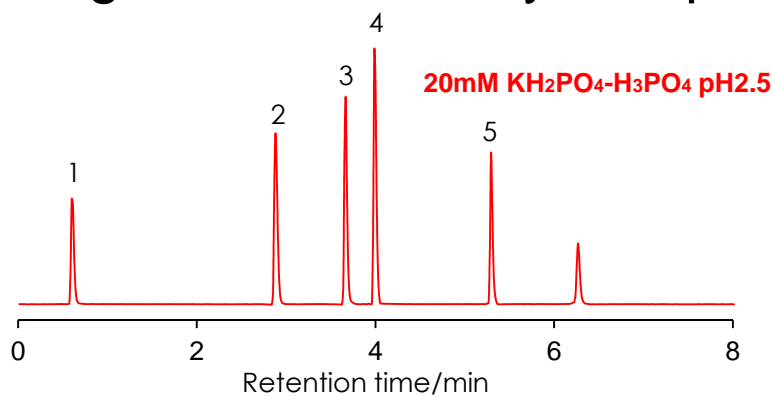


点眼剤成分の分離

Ingredients in an eye drop

SunShell C18 2.6 μm, 50 x 2.1 mm i.d.



Column: SunShell C18 2.6 μm, 50 x 2.1 mm

Mobile phase: A) 20mM KH₂PO₄-H₃PO₄ pH2.5, 10mM Ammonium formate pH3.0 or 0.1% formic acid

B) Acetonitrile

Time (min)	0	5	7.5
%B	0	60	60

Flow rate: 0.4 mL/min

Temperature: 37 °C

Detection: UV@265 nm

Sample: 1 = Pyridoxine HCl, 2 = Neostigmine methylsulfate, 3 = Naphazoline HCl,

4 = Chlorpheniramine, 5 = Glycyrrhizin