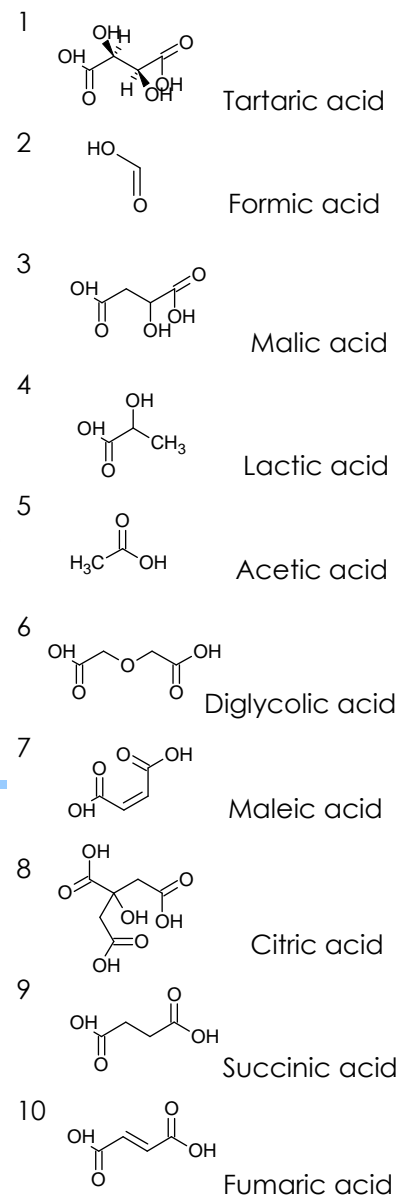
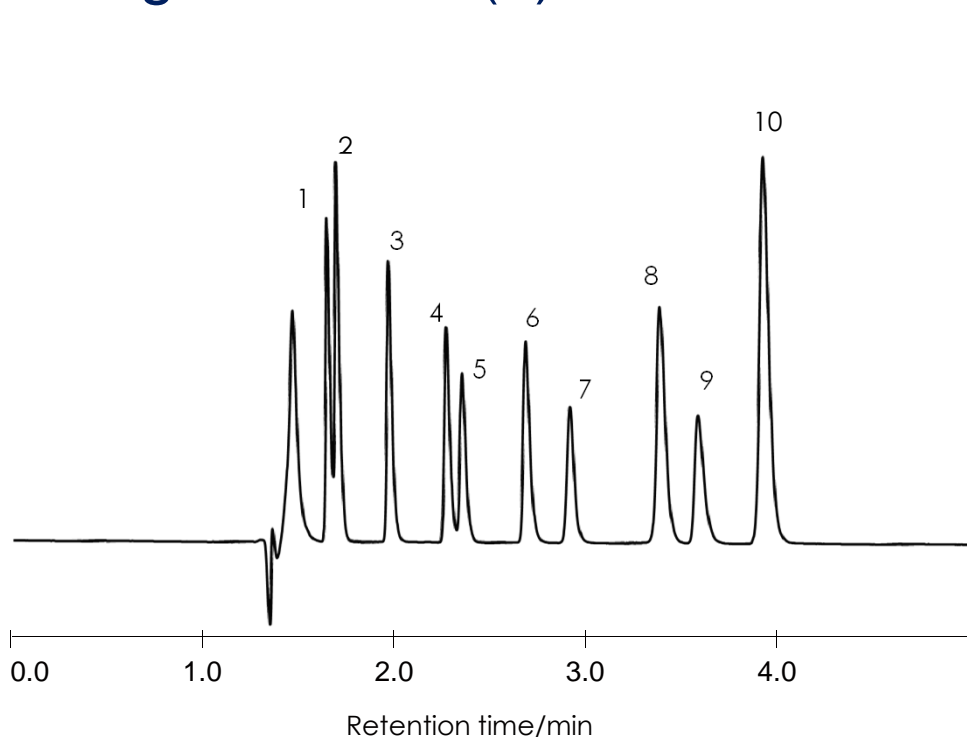


### 有機酸の分離 (4)

### Organic acids (4)

SunShell RP-AQUA 2.6 μm, 150 x 4.6 mm i.d.



Column: SunShell RP-AQUA 2.6 μm, 150 x 4.6 mm

Mobile phase: 0.1% H<sub>3</sub>PO<sub>4</sub>

Flow rate: 1.0 mL/min

Pressure : 23.2 MPa

Temperature: 40 °C

Detection: UV@210nm

Injection volume: 1 μL

Sample:

1 = Tartaric acid (500 ppm)

2 = Formic acid (1000 ppm)

3 = Malic acid (1000 ppm)

4 = Lactic acid (1000 ppm)

5 = Acetic acid (1000 ppm)

6 = Diglycolic acid (1000 ppm)

7 = Maleic acid (30 ppm)

8 = Citric acid (1000 ppm)

9 = Succinic acid (1000 ppm)

10 = Fumaric acid (10 ppm)

Instrument	
Hitachi Chromaster®	
Detector:	5410
Oven:	5310
AutoSampler:	5260
Pump:	5160

