

## 爆薬成分の分離

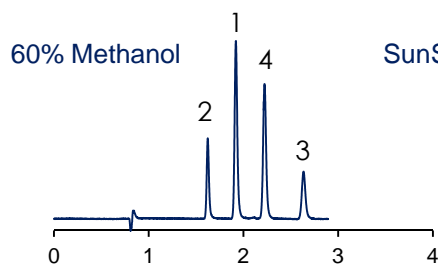
## Components of explosive

SunShell C18 2.6 μm, 100 x 4.6 mm i.d.

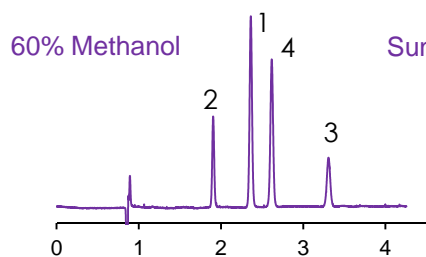
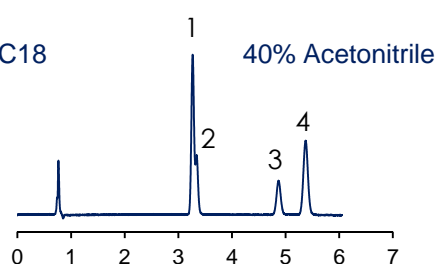
SunShell PFP 2.6 μm, 100 x 4.6 mm i.d.

SunShell RP-AQUA 2.6 μm, 100 x 4.6 mm i.d.

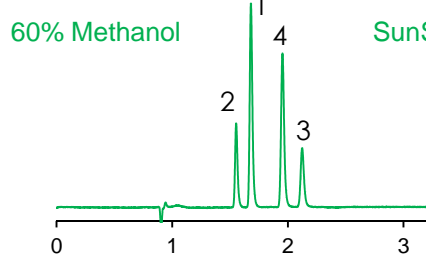
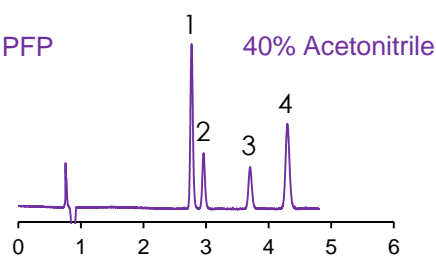
SunShell Phenyl 2.6 μm, 100 x 4.6 mm i.d.



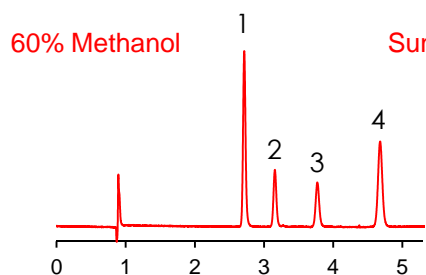
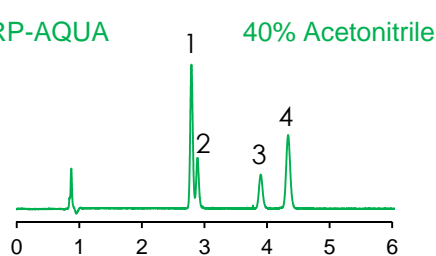
SunShell C18



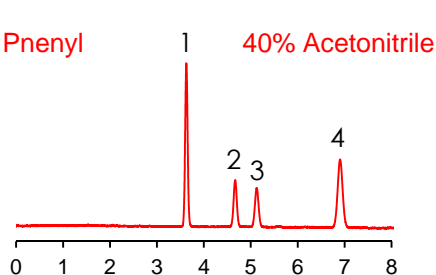
SunShell PFP



SunShell RP-AQUA

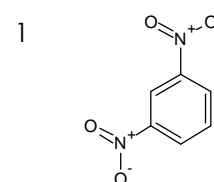


SunShell Phenyl

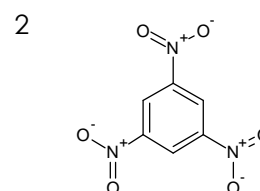


Retention time/min

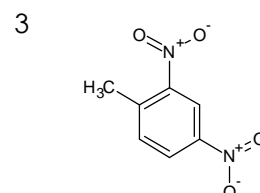
Retention time/min



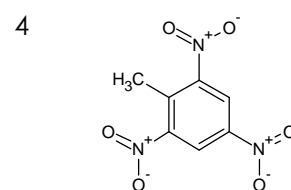
1,3-Dinitrobenzene



1,3,5-Trinitrobenzene



2,4-Dinitrotoluene



2,4,6-Trinitrotoluene

Column: SunShell C18 2.6 μm, 100 x 4.6 mm

SunShell PFP 2.6 μm, 100 x 4.6 mm

SunShell RP-AQUA 2.6 μm, 100 x 4.6 mm

SunShell Phenyl 2.6 μm, 100 x 4.6 mm

Mobile phase: Methanol:water=60:40

Acetonitrile:water=40:60

Flow rate: 1.0 mL / min

Temperature: 40 °C

Detection: UV@250 nm

Sample: 1 = 1,3-Dinitrobenzene, 2 = 1,3,5-Trinitrobenzene, 3 = 2,4-Dinitrotoluene, 4 = 2,4,6-Trinitrotoluene