

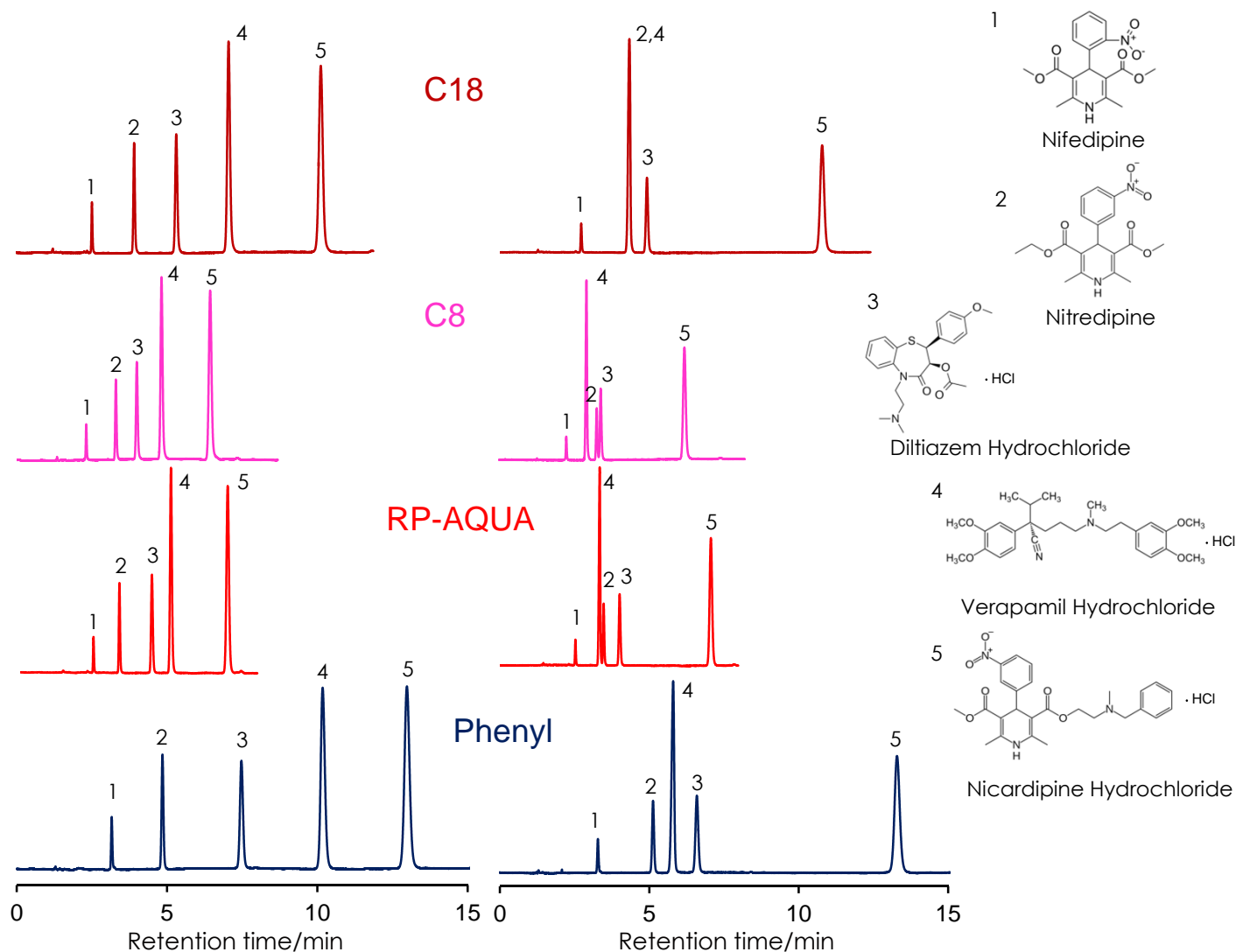
Ca拮抗剤の分離

Calcium antagonists

SunShell C18, C8, RP-AQUA and Phenyl 2.6 μ m, 150 x 4.6 mm i.d.

Methanol:25 mM phosphate buffer pH7=70:30

Methanol:10 mM ammonium acetate pH6.8=70:30



Column: SunShell C18, C8, RP-AQUA and Phenyl 2.6 μ m, 150 x 4.6 mm

Mobile phase: Methanol:25 mM phosphate buffer pH7=70:30 or
Methanol:10 mM ammonium acetate pH6.8=70:30

Flow rate: 1.0 mL / min

Temperature: 40 °C

Detection: UV@230 nm

Sample: 1 = Nifedipine, 2 = Nitredipine, 3 = Diltiazem Hydrochloride, 4 = Verapamil Hydrochloride,
5 = Nicardipine Hydrochloride