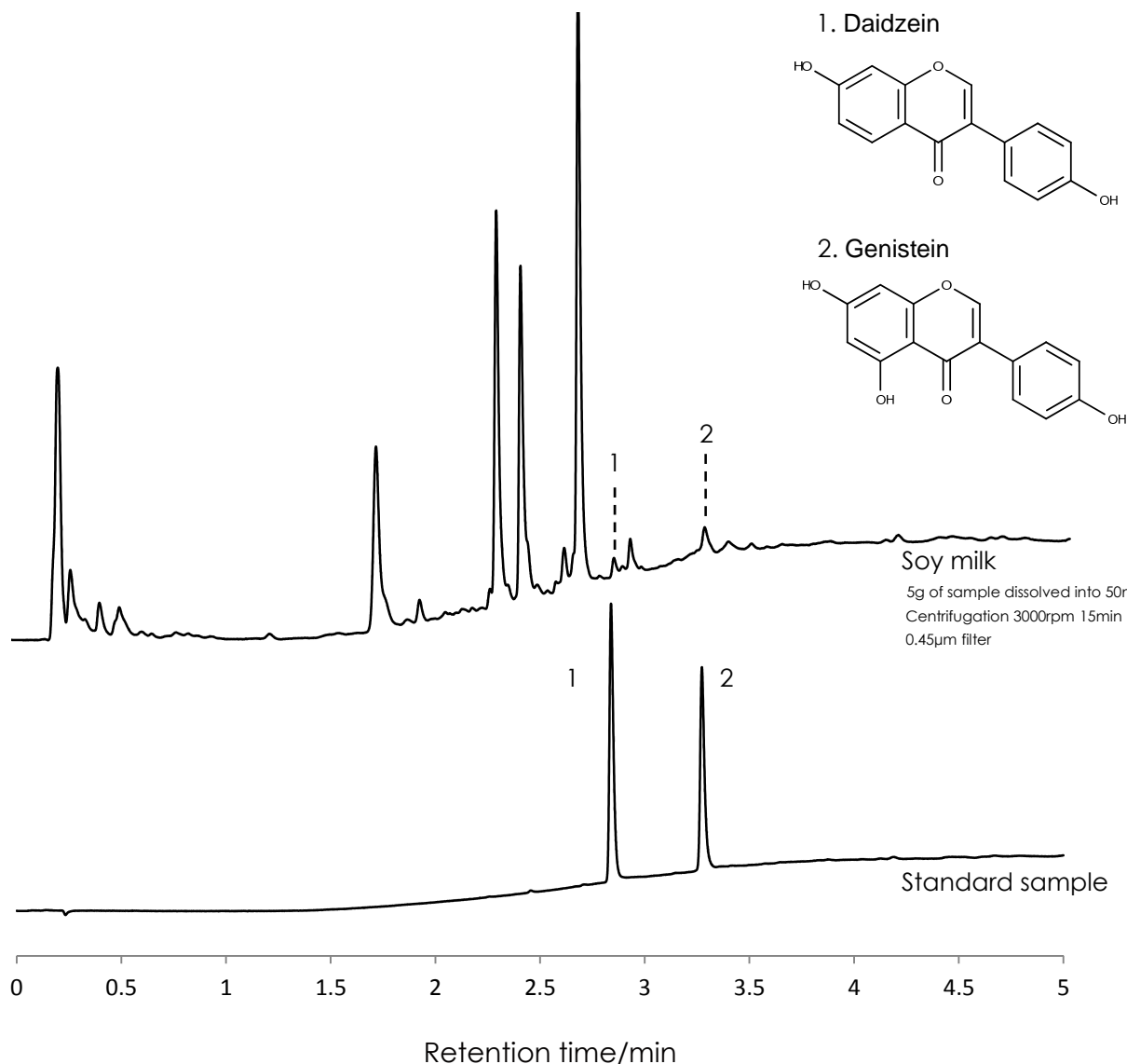


大豆イソフラボンの高速分離

Isoflavone

SunShell C18 2.0 μ m, 50 x 2.1 mm i.d.



Column: SunShell C18, 2.0 μ m 50 x 2.1 mm i.d.

Mobile phase: A) Water:Acetic acid = 100:3

B) Acetonitrile:Acetic acid = 100:3

Gradient program:

Time (min)	0	1	5
% B	10	40	40

Flow rate: 0.5mL/min

Temperature: 40 °C

Detection: UV@250nm

Sample: 1= Daidzein, 2 = Genistein

Instrument

Hitachi Chromaster®

Detector: 5410

Oven: 5310

AutoSampler: 5260

Pump: 5160

