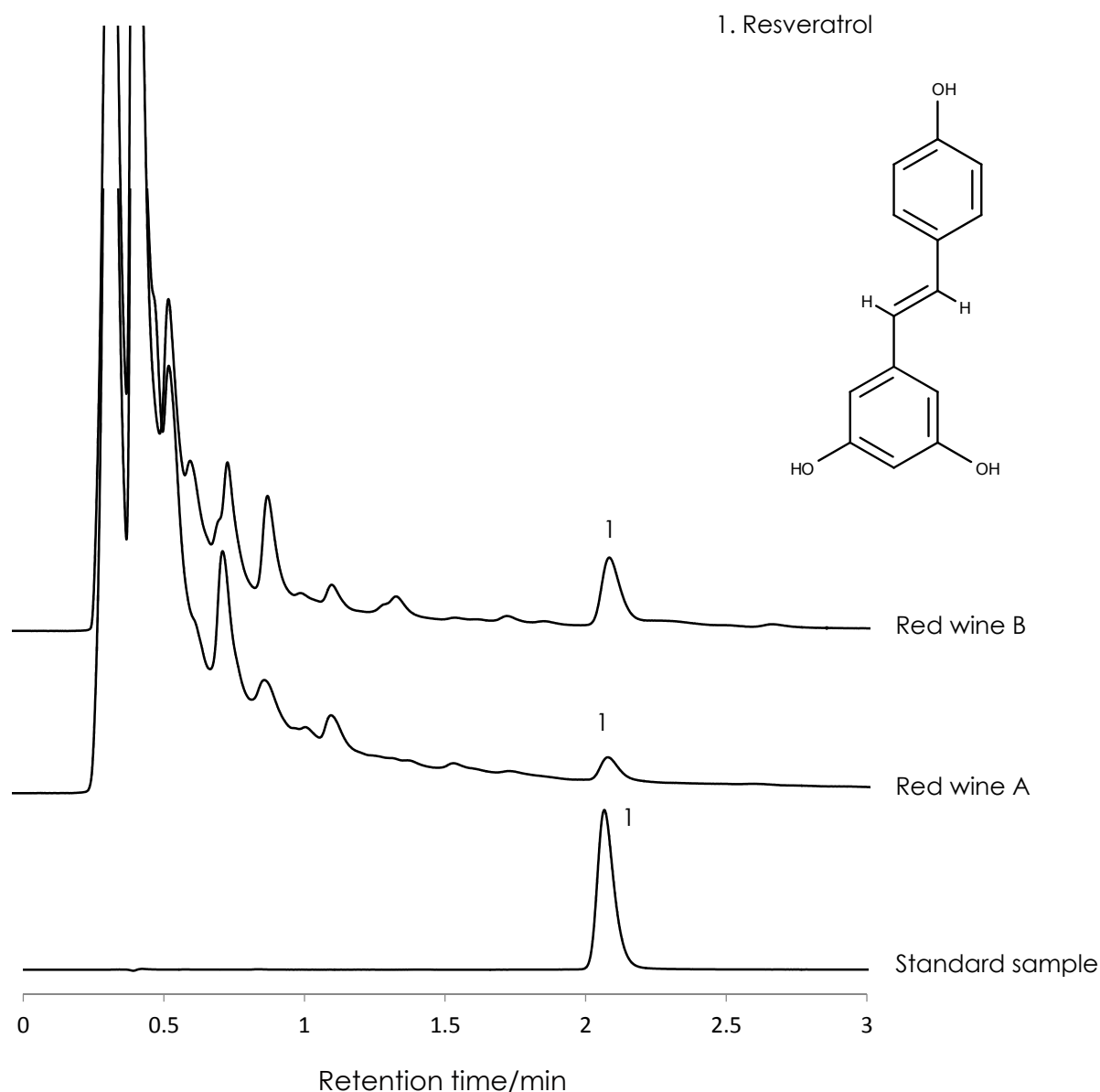


赤ワイン中ポリフェノール(レスベラトロール)の分離

Resveratrol

SunShell C18 2.6 μ m, 50 x 2.1 mm i.d.



Column: SunShell C18, 2.6 μ m 50 x 2.1 mm i.d.
Mobile phase: Acetonitrile:Water = 20:80
Flow rate: 0.3mL/min
Temperature: 40 $^{\circ}$ C
Detection: UV@310nm
Sample: 1= Resveratrol

Instrument	Hitachi Chromaster®
Detector:	5410
Oven:	5310
AutoSampler:	5260
Pump:	5160

