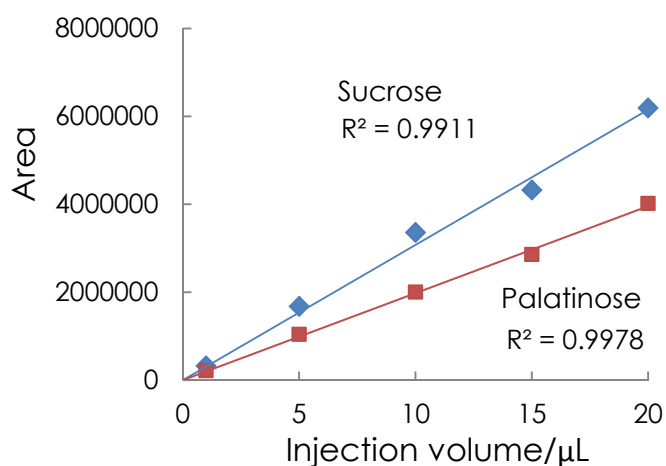
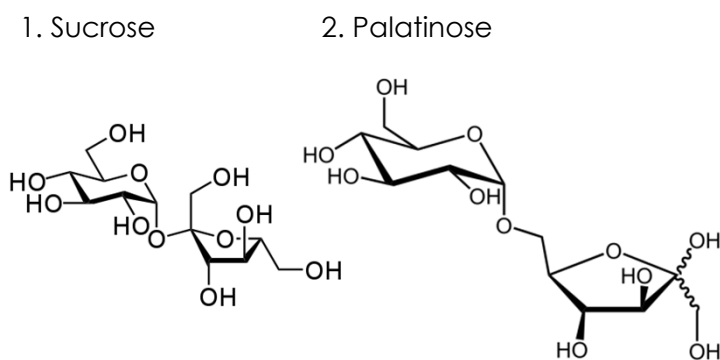
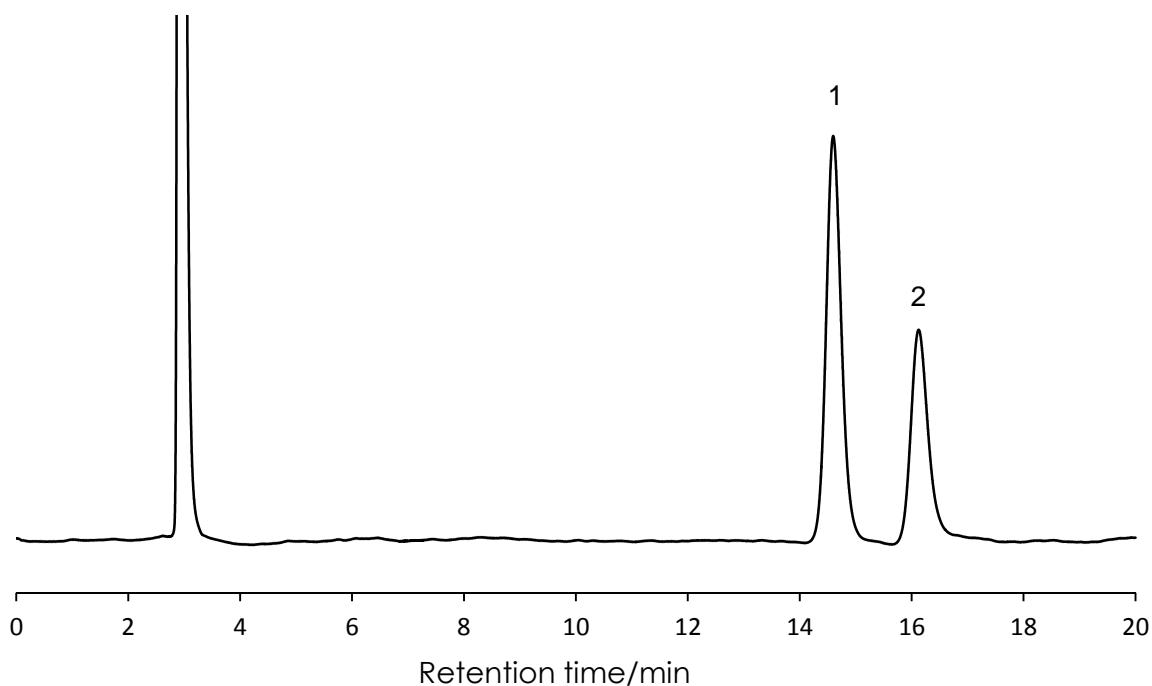


スクロースとパラチノースの分離

Sucrose and Palatinose

SunArmor NH2 5 μ m, 250 x 4.6 mm i.d.



Column: SunArmor NH2 5 μ m, 250 x 4.6 mm

Mobile phase: Acetonitrile:50mM ammonium acetate = 75:25

Flow rate: 1.0 mL/min

Temperature: 40 $^{\circ}$ C

Detection: RI

Sample: 1 = Sucrose, 2 = Palatinose