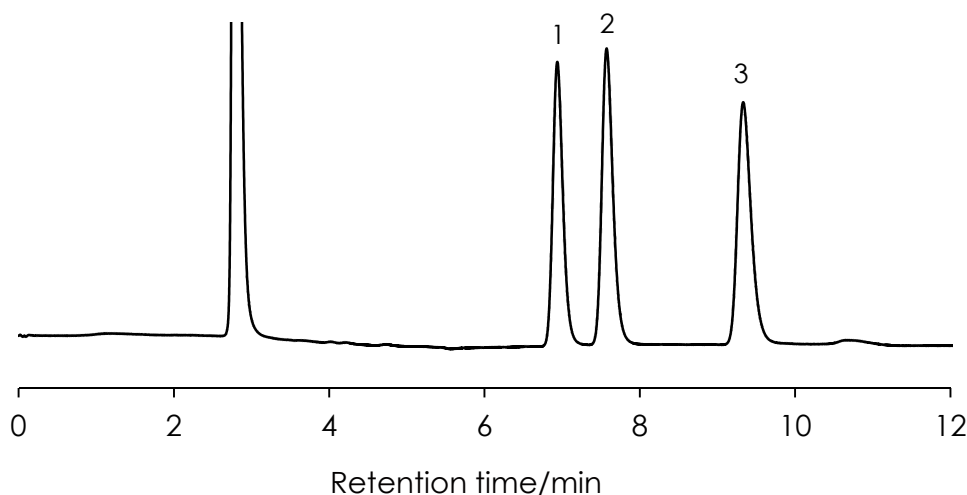


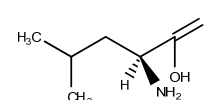
## 分岐鎖アミノ酸の分離

### Branched-chain amino acids SunArmor NH2 5 $\mu$ m, 250 x 4.6 mm i.d.

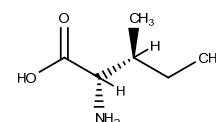
Temperature: 25 °C



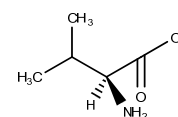
1. L-Leucine



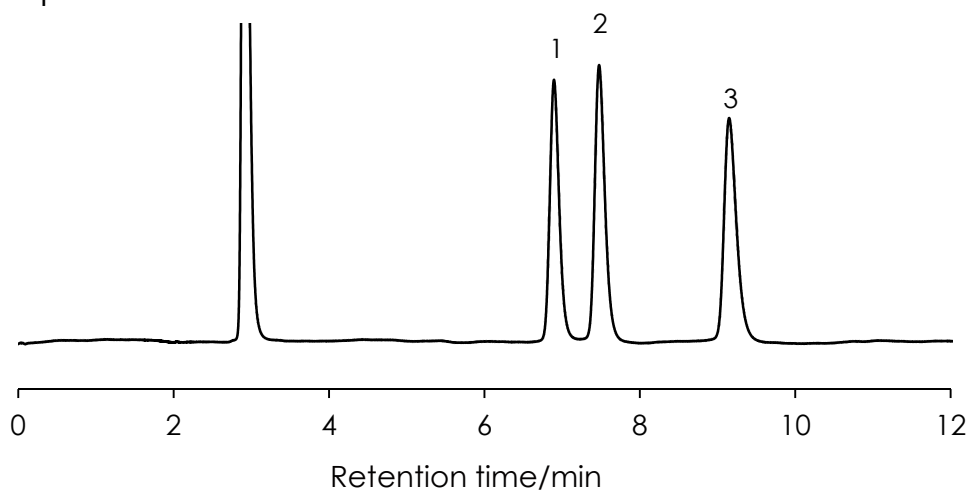
2. L-Isoleucine



3. L-Valine



Temperature: 40 °C



These samples have little temperature dependence.

Column: SunArmor NH2 5  $\mu$ m, 250 x 4.6 mm

Mobile phase: Acetonitrile:10mM ammonium acetate = 70:30

Flow rate: 1.0 mL/min

Temperature: 25, 40 °C

Detection: RI

Sample: 1 = L-Leucine, 2 = L-Isoleucine, 3 = L-Valine