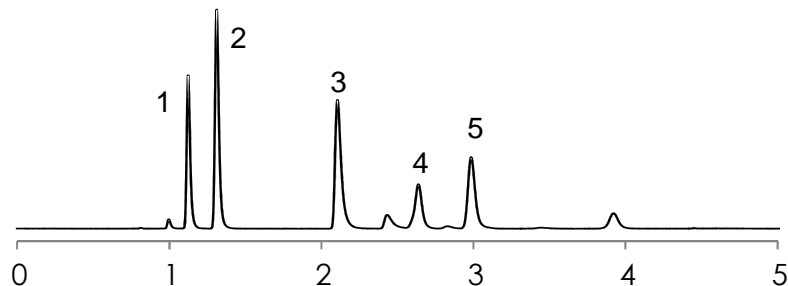


局所麻酔薬の分離

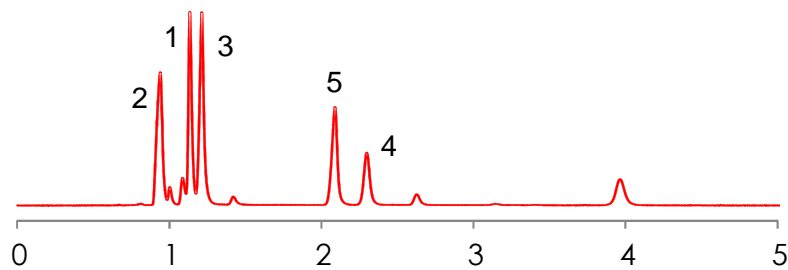
Local anesthetic

SunShell C18 2.6 μ m, 100 x 4.6 mm i.d.

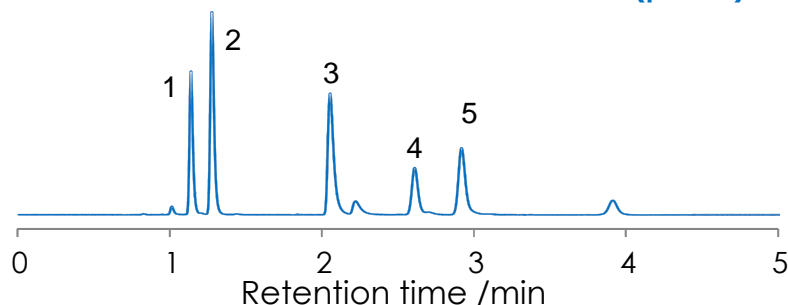
Methanol: 20 mM Phosphate buffer (pH 7.0) =7:3



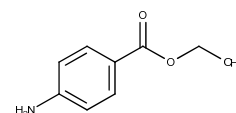
Methanol: 20 mM Ammonium acetate buffer (pH 7.0) =7:3



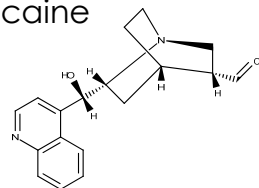
Methanol: 20 mM Ammonium bicarbonate buffer (pH 9.5) =7:3



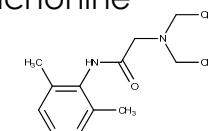
1. Benzocaine



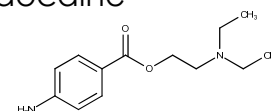
2. Procaine



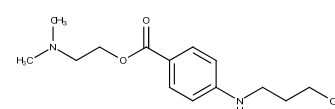
3. Cinchonine



4. Lidocaine



5. Tetracaine



Column :

SunShell C18 2.6 μ m, 100 x 4.6 mm i.d.

Mobile phase : Methanol : 20 mM Phosphate buffer (pH 7.0) =7:3

Methanol : 20 mM Ammonium acetate buffer (pH 7.0) =7:3

Methanol : 20 mM Ammonium bicarbonate buffer (pH 9.5) =7:3

Flow rate : 1.0 mL/min

Pressure : 24.8MPa

Temperature : 40 °C

Detection : UV@250 nm

Injection volume : 1 μ L

Sample : 1 = Benzocaine,

2 = Procaine,

3 = Cinchonine,

4 = Lidocaine,

5 = Tetracaine

Instrument

Hitachi Chromaster®

Detector: 5410

Oven: 5310

AutoSampler: 5260

Pump: 5160

