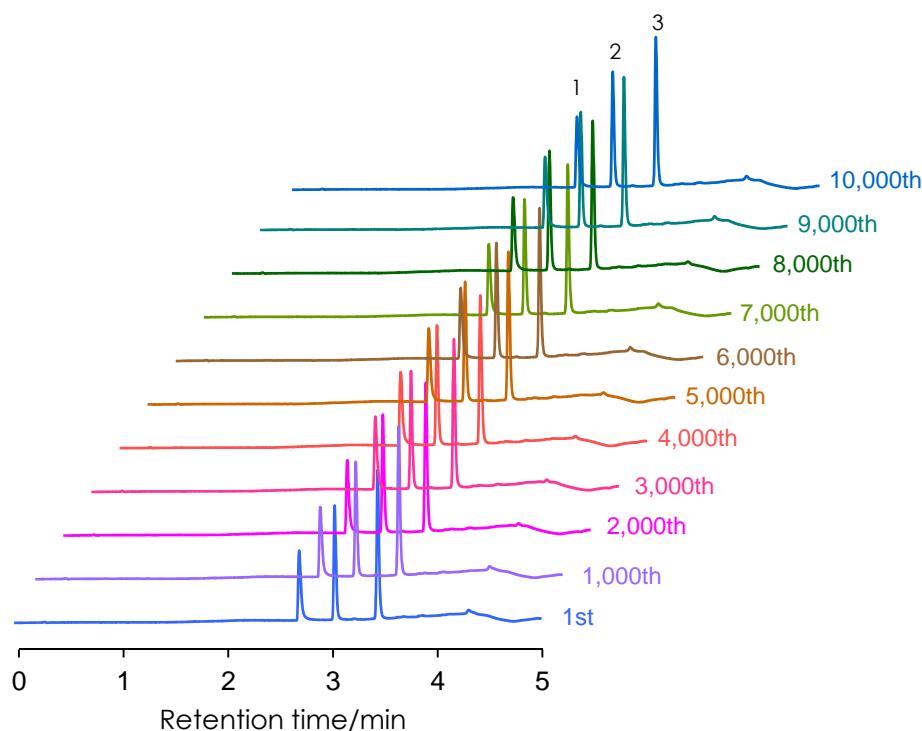


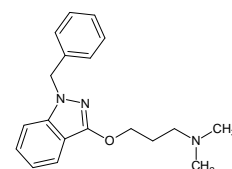
酸性条件(pH2)下の連続分析

SunShell C18 2.6 μm, 50 x 2.1 mm i.d.

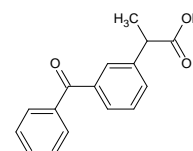
Continuous analysis under acidic pH condition



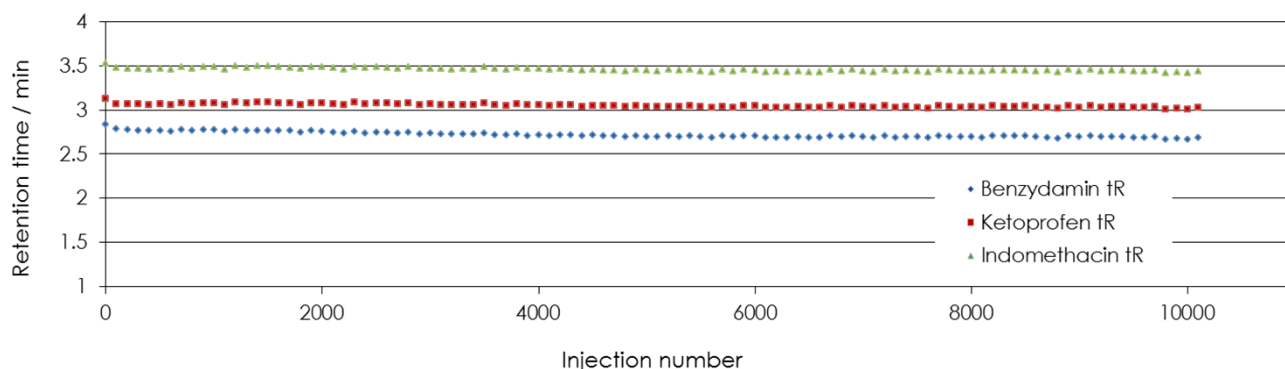
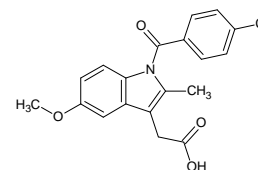
1. Benzydamine



2. Krtoprofen



3. Indomethacin



Column: SunShell C18, 2.6 μm 50 x 2.1 mm
 Mobile phase: A) 0.1% trifluoroacetic acid pH 2.0
 B) Acetonitrile

Gradient program:

Time (min)	0	3	3.1	5
% B	10	90	10	10

Flow rate: 0.5 mL/min
 Temperature: 40 °C
 Back pressure: 11 MPa to 17 MPa
 Detection: UV@270nm
 Injection volume: 0.5 μL
 Sample: 1=Benzydamin (0.5 mg/mL), 2=Ketoprofen (0.04 mg/mL),
 3= Indomethacin (0.05 mg/mL)

Instrument
 Hitachi Chromaster®
 Detector: 5410
 Oven: 5310
 AutoSampler: 5260
 Pump: 5160

