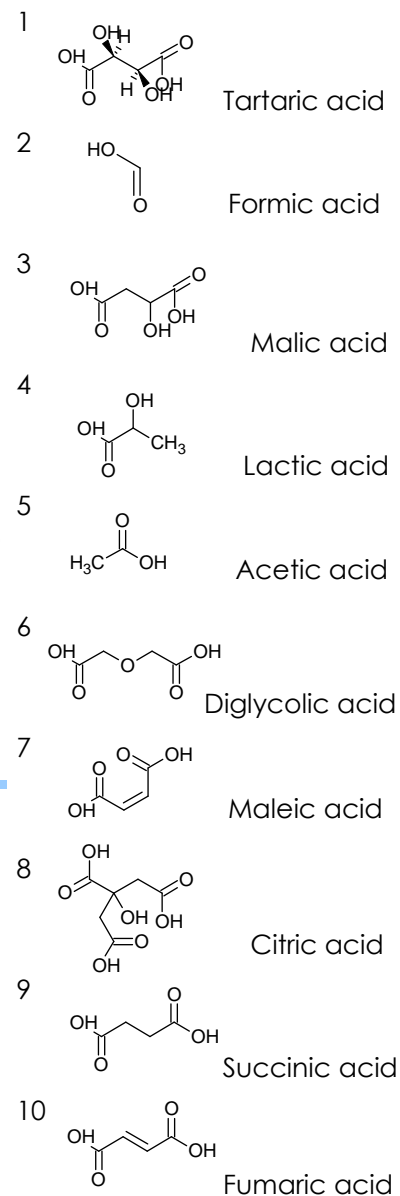
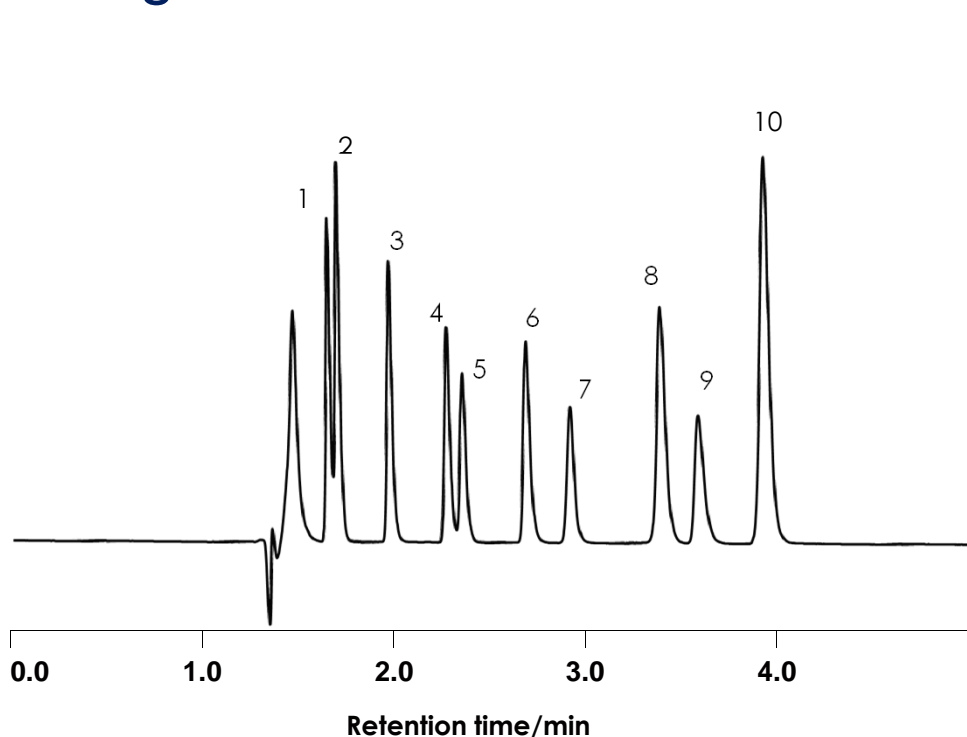


有機酸の分離

Organic acids

SunShell RP-AQUA 2.6 μ m, 150 x 4.6 mm i.d.



Column: SunShell RP-AQUA 2.6 μ m, 150 x 4.6 mm

Mobile phase: 0.1% H₃PO₄

Flow rate: 1.0 mL/min

Pressure : 23.2MPa

Temperature: 40 °C

Detection: UV@210nm

Injection volume: 1 μ L

Sample:

1 = Tartaric acid (500 ppm),

2 = Formic acid (1000 ppm),

3 = Malic acid (1000 ppm),

4 = Lactic acid (1000 ppm),

5 = Acetic acid (1000 ppm),

6 = Diglycolic acid (1000 ppm),

7 = Maleic acid (30 ppm),

8 = Citric acid (1000 ppm),

9 = Succinic acid (1000 ppm),

10 = Fumaric acid (10 ppm).

Instrument	
Hitachi Chromaster®	
Detector:	5410
Oven:	5310
AutoSampler:	5260
Pump:	5160

