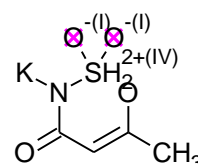
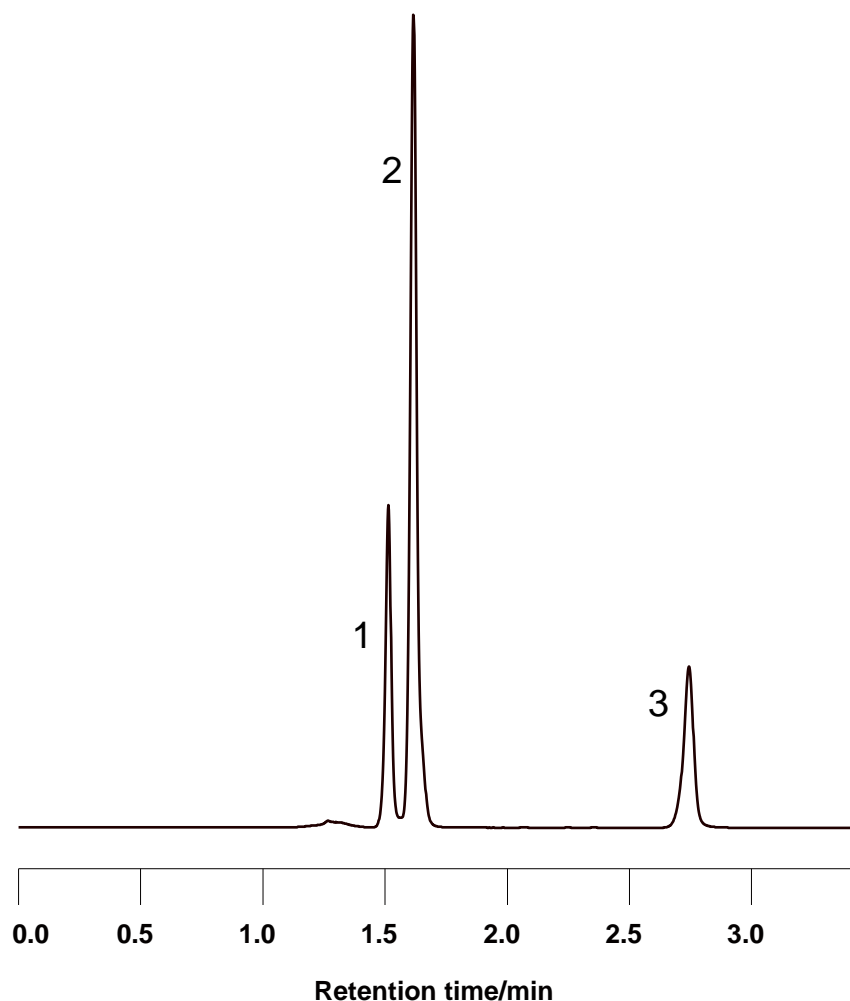


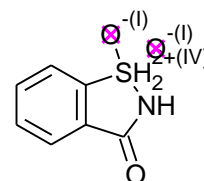
## 合成甘味料の分離

### Artificial sweeteners

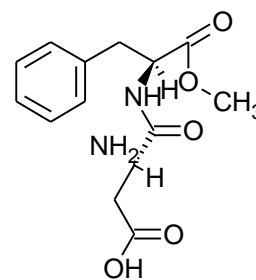
SunShell HILIC-Amide 2.6  $\mu\text{m}$ , 150 x 4.6 mm i.d.



1. Acesulfame K



2. Saccharin



3. Aspartame

Column:

SunShell HILIC-Amide 2.6  $\mu\text{m}$ , 150 x 4.6 mm i.d.

Mobile phase: acetonitrile:

25 mM phosphate buffer (pH2.5) =8:2

Flow rate: 1.0 mL/min ,

Pressure : 14.6MPa

Temperature: Ambient

Detection: UV@215 nm

Injection volume: 2  $\mu\text{L}$

Sample: 1 = Acesulfame K,

2 = Saccharin,

3 = Aspartame

Instrument

Hitachi Chromaster®

Detector: 5410

Oven: 5310

AutoSampler: 5260

Pump: 5160

