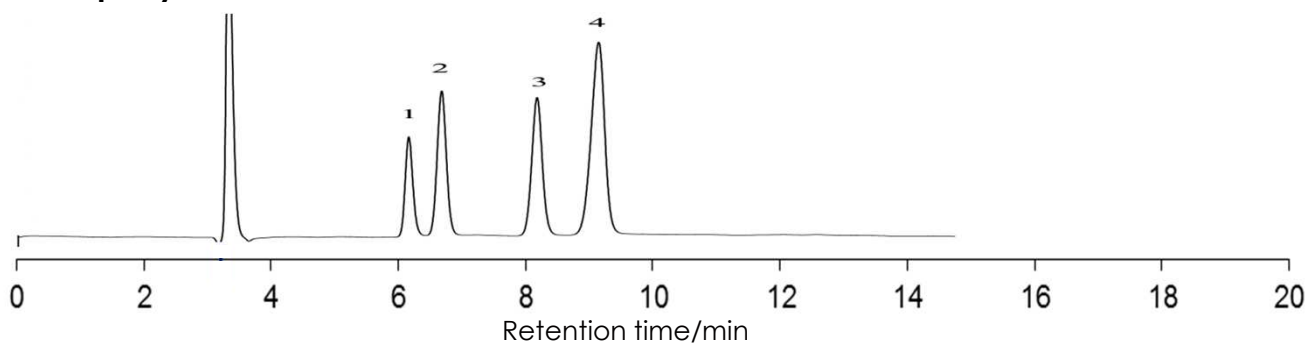


糖の分離

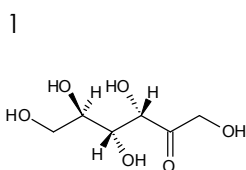
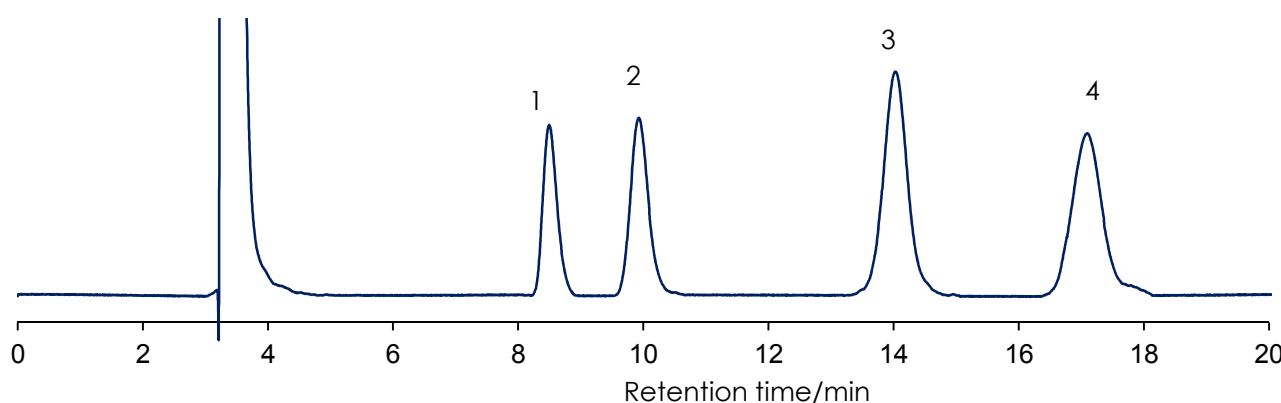
Sugar

Sunniest NH2 5 μ m, 250 x 4.6 mm i.d.

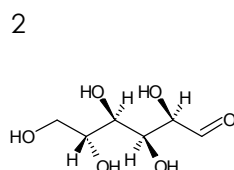
Company A NH2



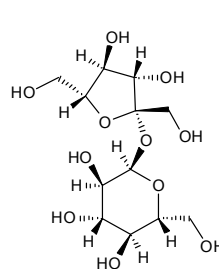
Sunniest NH2



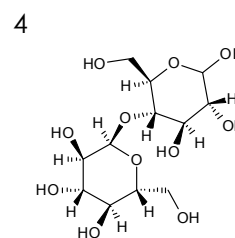
Fructose



Glucose



Sucrose



Maltose

Column: Company A NH2, 5 μ m 250 x 4.6 mm

Sunniest NH2, 5 μ m 250 x 4.6 mm

Mobile phase: Acetonitrile:water=75:25

Flow rate: 1.0 mL / min

Temperature: 40 $^{\circ}$ C

Detection: RI

Sample: 1 = Fructose, 2 = Glucose, 3 = Sucrose, 4 = Maltose