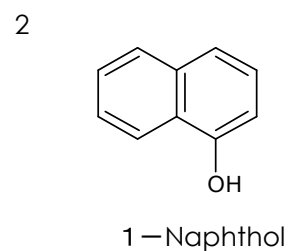
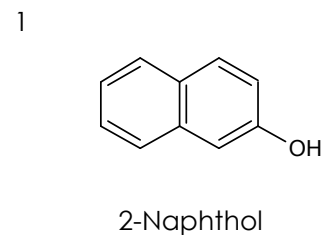
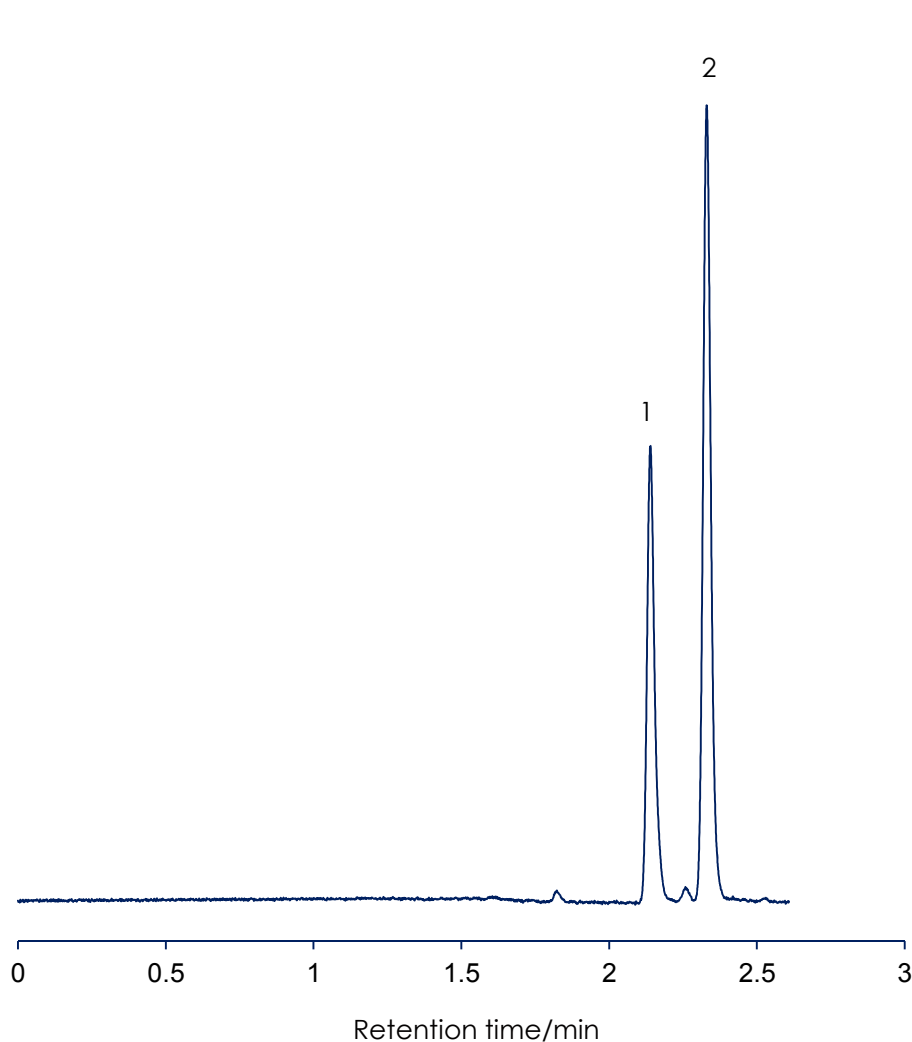


## ナフトール類の分離

### Naphthols

SunShell C18 2.6  $\mu$ m, 150 x 4.6 mm i.d.



Column: SunShell C18, 2.6  $\mu$ m 150 x 4.6 mm  
Mobile phase: Acetonitrile:water:formic acid=60:40:0.04  
Flow rate: 1.0 mL / min  
Temperature: 40  $^{\circ}$ C  
Detection: UV@250 nm  
Sample: 1 = 2-Naphthol, 2 = 1-Naphthol